



User Manual

Contents

ALDI guarantees that our exclusive brand products are developed to our stringent quality specifications. If you are not entirely satisfied with this product, please return it to the nearest ALDI store within 60 days from the date of purchase, for a full refund or replacement, or take advantage of our after sales support by calling the supplier's Customer Service Hotline.

FERREX® PETROL HIGH PRESSURE CLEANER HCP3000



- Overview..... 4
- Contents of Box.....6
- Overview7
- Explanation of the symbols on the device.....9
- Introduction.....13
- Device description.....14
- Scope of delivery.....15
- Proper use..... 15
- Safety instructions.....16
- Technical data.....23
- Unpacking..... 25
- Layout..... 26
- Before commissioning.....26
- Operation..... 28
- Transport..... 32
- Cleaning..... 33
- Maintenance.....34
- Storage..... 36
- Disposal and recycling.....36
- Troubleshooting.....37
- Warranty Details39
- Repair and Refurbished Goods or Parts Notice40

AUS

Made in China

FERREX® is a registered trademark of ALDI Stores

DISTRIBUTED BY:

ALDI STORES

1 SARGENTS ROAD

MINCHINBURY NSW 2770

www.aldi.com.au

AFTER SALES SUPPORT

702499

1300 855 831

support@scheppach.com.au

MODEL: HCP3000 09/2022

3
YEARS
WARRANTY

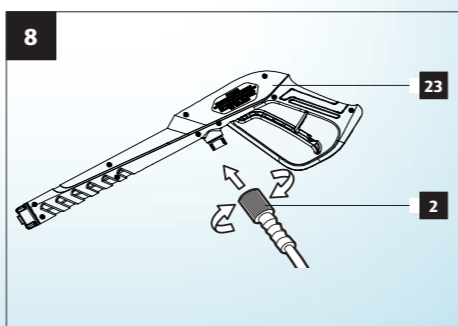
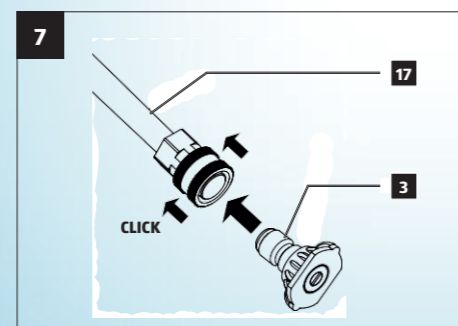
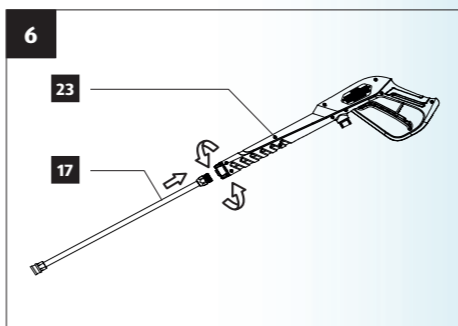
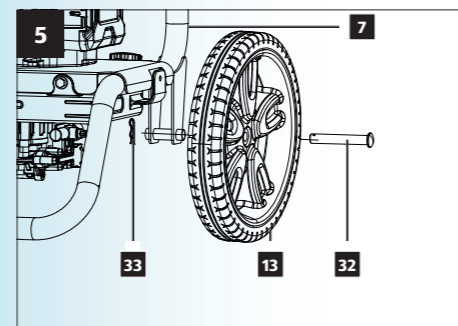
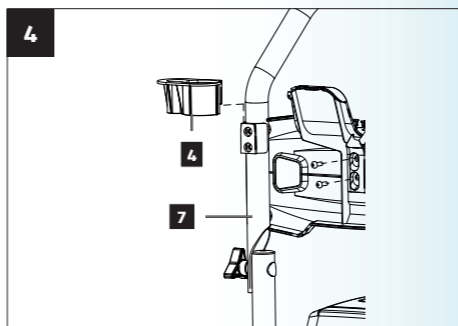
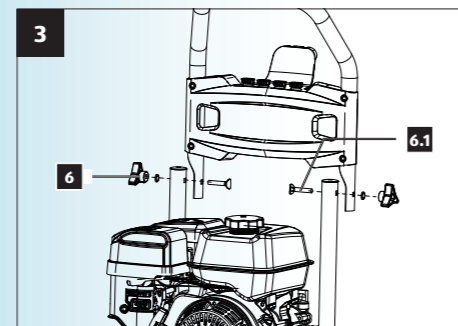
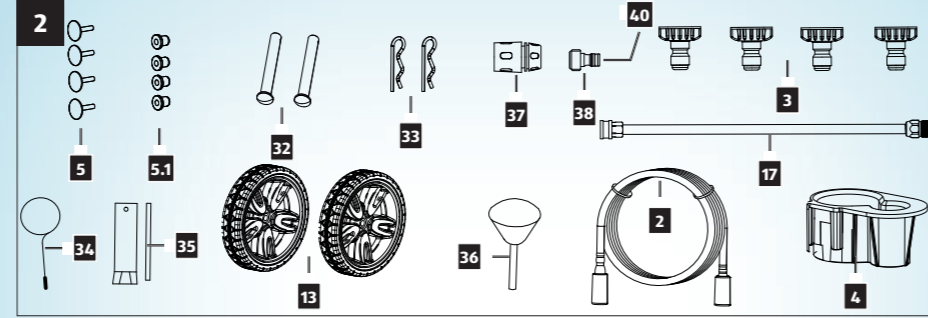
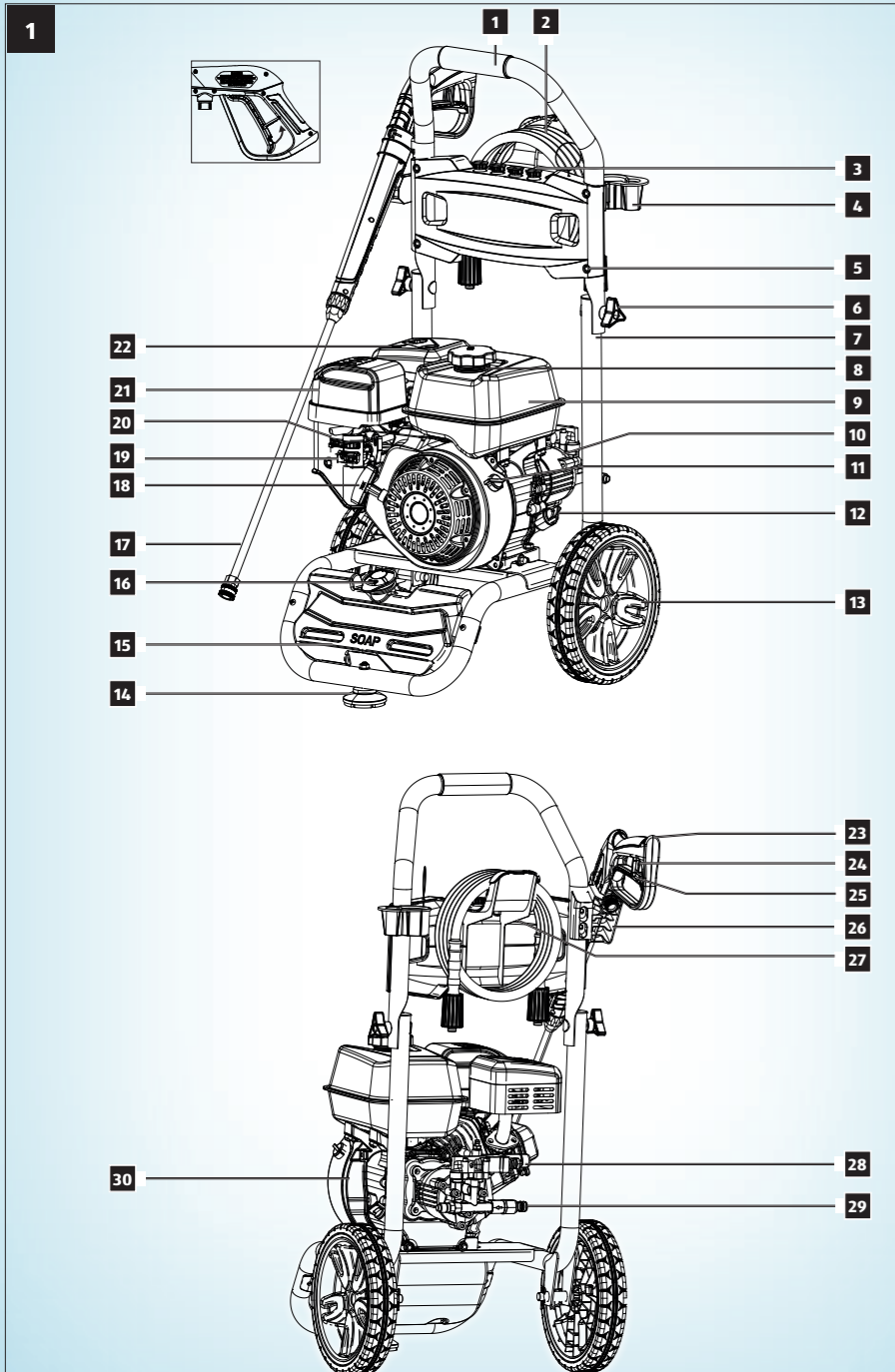


CAUTION!: Read the manual carefully before operating this machine!

Vers.No. 220516

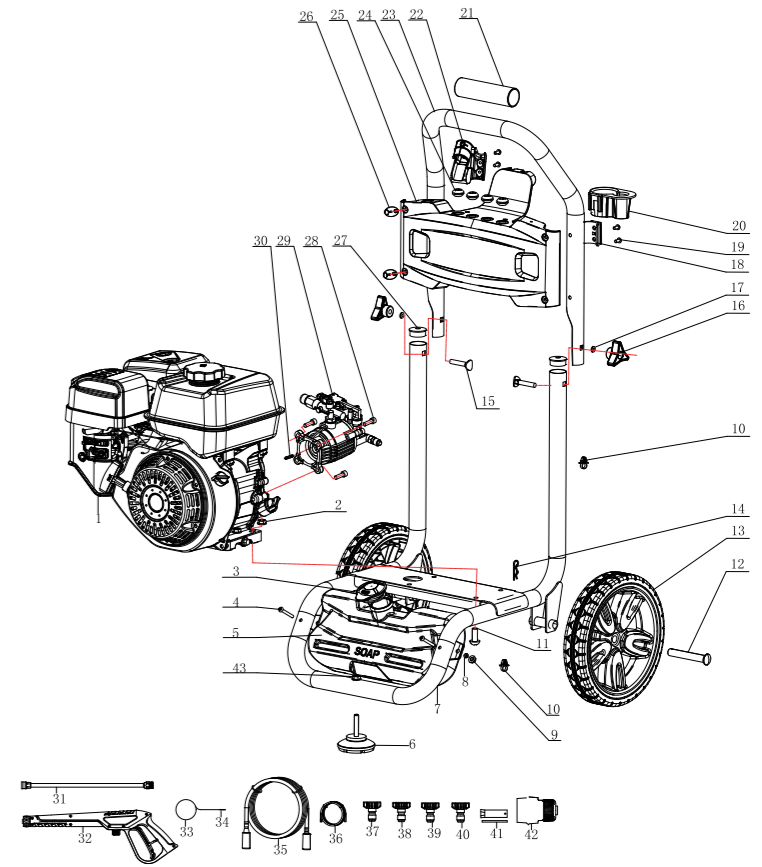
Original Instructions

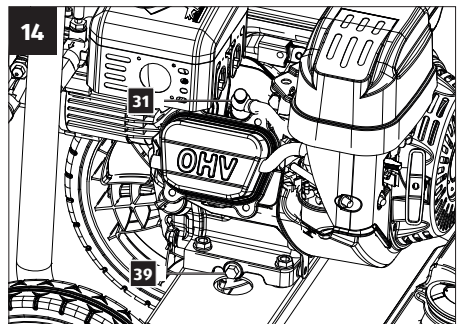
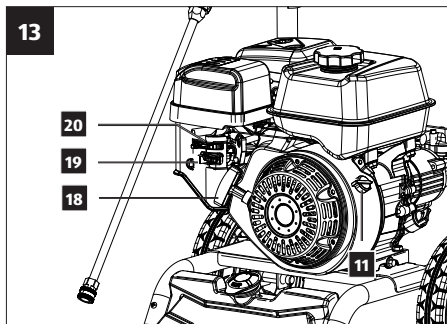
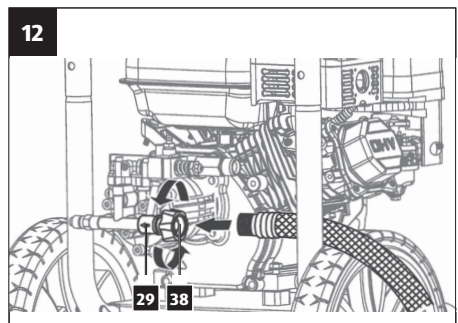
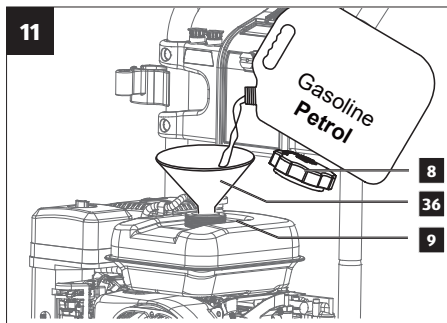
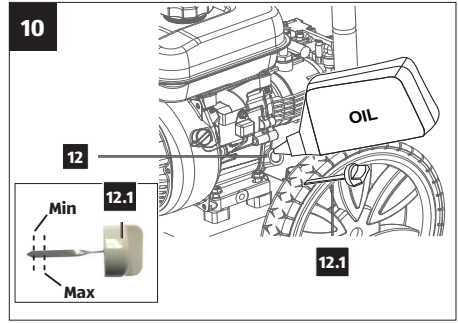
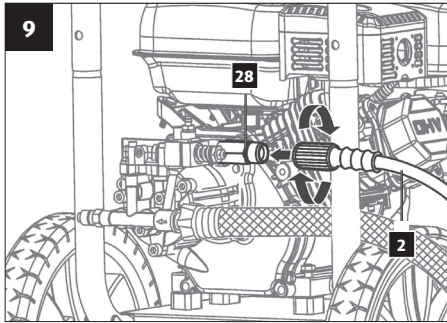


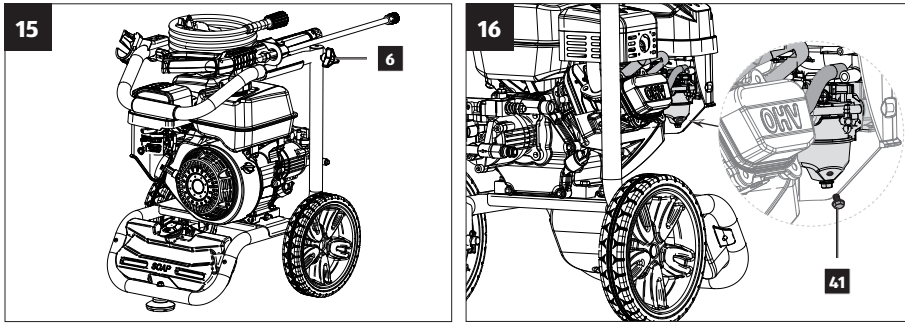


Contents of Box

- Wheels (x2)
- Axle (x2)
- Spring split pin (x2)
- High-pressure hose (x1)
- Hand spray gun (x1)
- Spraying lance (x1)
- High pressure nozzles (red, green, white) (x3)
- Low pressure nozzle / cleaning nozzle (black) (x1)
- Transport bracket (x1)
- Filling hose with funnel (x1)
- Nozzle cleaner needle (x1)
- Spark plug wrench (x1)
- Quick connector (x1)
- Hose connection adapter (x1)
- Assembly material (x1)
- Screwdriver (x1)
- Operating manual (x1)


















NOZZLE SELECTION GUIDE	
HIGH PRESSURE (NO SOAP FEED) 	0° Red
	25° Green
	40° White
LOW PRESSURE SOAP FEED OR RINSE 	Soap Black

I. Explanation of the symbols on the device

Symbols are used in this manual to draw your attention to potential hazards. The safety symbols and the accompanying explanations must be fully understood. The warnings themselves will not rectify a hazard and cannot replace proper accident prevention measures.

	This symbol is intended to indicate possible dangers. Follow all safety instructions that follow this symbol to avoid possible injury or death.
	If the instructions in the manual are not read and followed, there is a danger of injury or even death, as well as damage to property.
	Running engines emit carbon monoxide, an odourless, colourless, poisonous gas. Inhalation of carbon monoxide can cause nausea, fainting or death. DO NOT run indoors, even if the windows and doors are open.
	Petrol and its vapours are flammable and explosive. Switch off the engine and let it cool down for at least 2 minutes before refilling.
	Risk of explosion: Fuel and its vapours are highly flammable and explosive. DO NOT spray flammable liquids while the machine is still warm.
	Fire, naked flames and smoking prohibited!
	Attention: Danger of slipping on damp surfaces.
	Attention: Hot surface. Danger of burning!
	Wear safety shoes.

	Danger of eye injuries. Water jet can propel objects. Always wear safety goggles with side shields.
	Risk of electric shock! Never spray water on electrical power sources.
	Specification of the sound power level L_{WA} in dB
	Activate "choke" position (only when the engine is cold). Activate "Run" position when the engine is sufficiently warm.
	Wear hearing protection.
	Stop! Read all instructions carefully.
	Engine delivered without oil: (10W30 or 10W40) Fill the engine with the exact amount of oil according to the scope of delivery. Always check the oil level of the engine before starting. Read the operating manual before use.
	Fill the tank with fresh, clean petrol. Do not mix oil and fuel. Do not use fuel with more than 10% ethanol content.
	Fill oil / check oil level Do not operate the device if there is no oil visible in the oil tank.

	Danger: Exhaust gases are toxic! Do not operate in un-ventilated areas.
	Danger: If the device is operated while refuelling, there is a risk of fire and explosion!
	High-pressure jets can be dangerous when used improperly. The jet must not be directed towards any persons, animals, active electrical equipment or the device itself.
	Warning: Device is not suitable for connection to the drinking water supply system.
	Caution: Hot surface. Do not touch the surface below.
	Warranty Class / 3 Years Warranty
	Comply with the Australian norms and directives

DANGER!	Signal word to indicate an imminently hazardous situation which, if not avoided, will result in death or serious injury.
WARNING!	Signal word to indicate a potentially hazardous situation which, if not avoided, could result in death or serious injury.
CAUTION!	Signal word to indicate a potentially hazardous situation which, if not avoided, could result in minor or moderate injury.
NOTE	Signal word to indicate a possible hazardous situation which, if not avoided, could result in property damage.

II. Introduction

Congratulations on choosing to buy a FERREX® product.

All products brought to you by FERREX® are manufactured to the highest standards of performance and safety, and as part of our philosophy of customer service and satisfaction, are backed by our comprehensive 3 Years Warranty.

We hope you will enjoy using your purchase for many years to come.

Note:

According to the applicable product liability law the manufacturer of this device is not liable for damages which arise on or in connection with this device in case of:

- improper handling,
- non-compliance with the instructions for use,
- repairs by third party, non-authorized skilled workers,
- installation and replacement of non-original spare parts,
- improper use.

Recommendations:

Read the entire text of the operating instructions prior to the assembly and operation of the device.

These operating instructions are intended to make it easier for you to get familiar with your device and utilise its intended possibilities of use.

The operating instructions contain important notes on how to work safely, properly and economically with your petrol high pressure cleaner and how to avoid dangers, save repair costs, reduce downtime, and increase the reliability and working life of the petrol high pressure cleaner .

In addition to the safety regulations contained herein, you must in any case comply with the applicable regulations of your country with respect to the operation of the petrol high pressure cleaner .

Put the operating instructions in a clear plastic folder to protect them from dirt and humidity, and store them near the petrol high pressure cleaner. The instructions must be read and carefully observed by each operator prior to starting the work. Only persons who have been trained in the use of the petrol high pressure cleaner and have been informed on the related dangers and risks are allowed to use the petrol high pressure cleaner. The required minimum age must be met.

In addition to the safety notes contained in the present operating instructions and the special regulations of your country, the generally recognised technical rules for the operation of generators must be observed.

III. Device description (Fig. 1-16)

1. Bow-type handle
2. High-pressure hose
3. Nozzles (red, green, white, black)
4. Transport bracket
5. Fixing plug
- 5.1 Sleeve
6. Star grip screws
- 6.1 Star grip screw screws
7. Tubular frame
8. Tank cover, incl. filter insert
9. Fuel tank
10. Carburettor
11. On/off switch
12. Oil inlet/dipstick
- 12.1 Oil dipstick
13. Wheel
14. Rubber foot
15. Cleaning agent tank
16. Filler cap for cleaning agent tank
17. Spraying lance
18. Pull cable starter
19. Fuel valve
20. Choke lever
21. Air filter
22. Silencer
23. Hand spray gun
24. Trigger lock
25. Trigger
26. Spray gun holder
27. Hose holder
28. Water outlet
29. Water inlet
30. High-pressure pump
31. Spark plug/Spark plug connector
32. Axle
33. Spring split pin
34. Nozzle cleaning needle
35. Spark plug wrench
36. Filling hose with funnel
37. Quick connector

38. Hose connection adapter
39. Oil drain screw
40. Inlet sieve
41. Petrol drain screw

IV. Scope of delivery

- Wheels (13)
- Axle (32)
- Spring split pin (33)
- High-pressure hose (2)
- Hand spray gun (23)
- Spraying lance (17)
- High pressure nozzles (red, green, white) (3)
- Low pressure nozzle / cleaning nozzle (black) (3)
- Transport bracket (4)
- Filling hose with funnel (36)
- Nozzle cleaner needle (34)
- Spark plug wrench (35)
- Quick connector (37)
- Hose connection adapter (38)
- Assembly material
- Screwdriver
- Operating manual

V. Proper use

This device is intended for cleaning:

Machines, vehicles, structures, tools, facades, terraces, gardening tools, etc.

- for cleaning with the low-pressure jet and cleaning agent (e.g. cleaning of machines, vehicles, structures, tools)
- for cleaning with a high-pressure jet without cleaning agent (e.g. cleaning facades, terraces, garden tools)

The machine may only be used for its intended purpose. Any use beyond this is improper. The user/operator, not the manufacturer, is responsible for damages or injuries of any type resulting from this.

An element of the proper intended use is also the observance of the safety instructions, as well as the assembly instructions and operating information in the operating manual. Persons who operate and maintain the machine must be familiar with this operating manual and must be informed about potential dangers.

In addition, the applicable accident prevention regulations must be strictly observed. Other general occupational health and safety-related rules and regulations must be observed.

The liability of the manufacturer and resulting damages are excluded in the event of modifications of the machine.

Please note that our equipment was not designed with the intention of use for commercial or industrial purposes. We assume no guarantee if the device is used in commercial or industrial applications, or for equivalent work.

VI. Safety instructions

6.1 Danger levels

ATTENTION

Note on a potentially dangerous situation that can lead to property damage.

⚠ CAUTION

Note on a potentially dangerous situation that can lead to minor injuries.

⚠ WARNING

Information on a potentially dangerous situation that can lead to severe personal injury or death.

⚠ DANGER

Information on an imminent danger that will lead to severe personal injury or death.

6.2 General safety instructions

IMPORTANT!

Before using your device for the first time, read these safety instructions and act accordingly. Store these safety instructions for later use or for subsequent owners.

- Before start-up, read the operating manual for your device and pay particular attention to the safety instructions.
- Warning and information labels attached to the device provide important information for safe operation.

- In addition to the information in the operating manual, the general safety and accident prevention regulations of the legislature must be followed.
- Observe the relevant national regulations of the legislator for liquid emitters.
- Observe the relevant national regulations of the legislator for accident prevention. Liquid emitters must be tested regularly and the result of the test must be recorded in writing.

The machines must not be used by children. Children should be supervised in order to ensure that they do not play with the device.

This machine is not intended for use by persons (including children) with reduced physical, sensory or mental capabilities, or lack of experience and knowledge, unless they have been given supervision or instruction concerning use of the appliance by a person responsible for their safety.

⚠ WARNING

This machine is designed to use the cleaning agents supplied or recommended by the manufacturer. The use of other cleaning agents or chemicals may affect the safety of the machine.

⚠ WARNING

High pressure jets can be dangerous when used improperly. The jet must not be directed towards any persons, pets, active electrical equipment or the machine itself.

⚠ WARNING

Do not use this machine within range of other people unless they are wearing protective clothing.

⚠ WARNING

Do not direct the jet at yourself or others to clean clothing or footwear.

⚠ WARNING

Risk of explosion: Do not spray flammable liquids.

⚠ WARNING

High pressure cleaners shall not be operated by children or untrained persons.

⚠ WARNING

High-pressure hoses, fixtures and couplings are important for machine safety. Only use high-pressure hoses, fixtures and couplings recommended by the manufacturer.

⚠ WARNING

To ensure machine safety, only use original spare parts from the manufacturer or spare parts approved by the manufacturer.

⚠ WARNING

Water that has flowed through the backflow prevention device is considered non-potable.

⚠ WARNING

Do not use the machine if a connection cable or important parts of the machine are damaged, e.g. safety devices, high-pressure hoses, spray gun.

⚠ WARNING

Machines powered by an internal combustion engine must not be used indoors without adequate ventilation systems approved by the relevant national health and safety authorities.

⚠ WARNING

Make sure that there are no exhaust emissions near air intakes.

6.3 Water connection**⚠ DANGER**

- The high-pressure hose must not be damaged. A damaged high-pressure hose must be replaced immediately. Only hoses and connections recommended by the manufacturer may be used. For the order no., please refer to the operating manual.
- The screw connection of all connection hoses must be tight.

ATTENTION

- Observe the regulations of your water supply company.

6.4 Operation**⚠ DANGER**

- The device with the working equipment must be checked for proper condition and operational safety before use.

Do not use the device if a connection cable or important parts of the device are damaged, e.g. safety devices, high-pressure hoses, hand spray guns.

- Never inject liquids containing solvents or undiluted acids and solvents! These include, for example, petrol, paint thinner or heating oil. The spray mist is highly flammable, explosive and poisonous. Do not use acetone, undiluted acids and solvents as they can damage the materials used on the device.
- When using the device in danger zones (e.g. petrol stations), the relevant safety regulations must be observed. Do not operate the device in explosive environments.
- All live parts in the work area must be protected from water jets.
- The trigger of the hand spray gun must not be jammed during operation.

ATTENTION

- Do not use acetone, undiluted acids or solvents as they corrode the materials used on the device.
- The device must have a level, stable base.
- Do not operate the device at temperatures below 5° C.

⚠ WARNING

- When using cleaning agents, the safety data sheet of the cleaning agent manufacturer must be observed, especially the instructions on personal protective equipment.
- Only cleaning agents approved by the device manufacturer may be used. This device has been developed for the use of cleaning agents that are supplied or recommended by the manufacturer. The use of cleaning agents or chemicals may affect the safety of the device.
- Keep cleaning agents out of the reach of children.
- Do not open the cover while the device is in operation.
- In case of longer breaks in operation, switch off the device at the main switch / device switch.

⚠ WARNING

- Asbestos-containing materials and other materials containing substances hazardous to health must not be sprayed off.
- Before cleaning, a risk assessment of the surfaces to be cleaned must be carried out to identify health and safety requirements. The necessary protective measures must be taken accordingly.

- With short spraying lances there is a danger of injury as a hand may accidentally come into contact with the high-pressure jet. If the spraying lance used is shorter than 75 cm, do not use a spot spraying nozzle or rotor nozzle.

ATTENTION

- Vehicle tyres/tyre valves may only be cleaned with a minimum spraying distance of 30 cm. Otherwise the vehicle tyre/tyre valve may be damaged by the high-pressure jet. The first sign of damage is the discolouration of the tyre. Damaged vehicle tyres are a source of danger.

⚠ CAUTION

- If the operating manual of the unit (technical data) specifies a sound pressure above 80 dB(A), wear hearing protection.
- Wear suitable protective clothing and safety goggles to protect against splashing water or dirt.
- The recommended cleaning agents must not be used undiluted. The products are safe to operate as they do not contain any environmentally harmful substances.
In case of contact of cleaning agent with eyes, immediately rinse thoroughly with plenty of water and consult a doctor immediately if swallowed.
- Allow the hoses to cool down after hot water operation or operate the device briefly in cold water mode.

6.4.1 For units with a hand-arm vibration value >2.5 m/s² (see technical data)

⚠ DANGER

- Prolonged use of the device may lead to vibration-induced circulatory problems in the hands. A generally valid duration for use cannot be determined because it depends on several influencing factors:
 - Personal predisposition to poor circulation (often cold fingers, finger tingling).
 - Low ambient temperature. Wear warm gloves to protect your hands.
 - Tight grasping worsens the blood circulation.
 - Uninterrupted operation is worse than operation interrupted by breaks.
- In case of regular, long-term use of the device and repeated occurrence of corresponding signs (for example, finger tingling, cold fingers), we recommend a medical examination.

6.5 Operation

⚠ WARNING

- For petrol or oil-powered machines, it is important to provide adequate ventilation and ensure that exhaust gases are properly discharged.

⚠ DANGER

- The operator must use the device as intended. It must take the local conditions into account and pay attention to third parties, especially children, when working with the device.
- The device must never be left unattended while it is in operation.
- The device may only be used by persons who have been instructed in its handling or who have demonstrated their ability to operate it and have been expressly instructed to use it. The device must not be operated by children or untrained persons.
- Always wear suitable gloves when working on the device.
- The water jet coming out of the spraying lance creates a recoil force. Due to the angled spraying lance, a force acts upwards. Hold the gun and spraying lance firmly.
- When using angled spraying equipment, the recoil forces and twisting forces may change.

⚠ WARNING

- Aerosols can develop when using high pressure cleaners. Inhaling aerosols can cause damage to your health. Respiratory protection masks of class FFP2 or higher are suitable for protection against aqueous aerosols.

6.6 Transport

⚠ DANGER

- When transporting the device, the engine must be shut down, the spark plug connector removed and the device securely fastened.

6.7 Maintenance

⚠ DANGER

- Before cleaning and servicing the device and replacing parts, switch off the device.
- Depressurize the high-pressure system before working on the device and accessories.
- The spark plug connector must be removed.
- Repairs may only be carried out by approved service centres or by specialists in this field who are familiar with all relevant safety regulations.

6.8 Accessories and spare parts

⚠ DANGER

- To avoid hazards, repairs and the installation of spare parts may only be carried out by authorised customer service.
- Only accessories and spare parts approved by the manufacturer may be used. Original accessories and original spare parts provide the guarantee that the device can be operated safely and without malfunctions.

6.9 Hot water and petrol engine devices

⚠ DANGER

- Only the fuel specified in the operating manual may be used. There is a risk of explosion with unsuitable fuels.
- When refuelling devices with petrol engines, make sure that no fuel gets onto hot surfaces.
- Please always observe the special safety instructions in the operating manual for devices with petrol engines.
- When operating the device indoors, ensure that there is sufficient ventilation and that the exhaust gases are discharged. (Danger of poisoning)
- The flue opening must not be closed.

⚠ WARNING

- Danger of burning! Do not bend over or touch the flue opening.

6.10 Handling fuel

⚠ DANGER

- Do not operate the high pressure cleaner if fuel has been spilled, move the device to another location and avoid any spark formation.
- Do not store, spill or use fuel near open flames or equipment such as stoves, boilers, water heaters, etc. that have a pilot light or produce sparks.
- Keep highly flammable objects and substances away from the silencer (at least 2 m).
- Do not operate the engine without the silencer and check it regularly, clean it and replace it if necessary.
- Do not use the engine on wooded, bushy or grassy terrain without the exhaust pipe being fitted with a spark arrester.
- Except when making adjustments, do not run the engine with the air filter removed or without the cover over the intake manifold.
- Do not make any adjustments to governor springs, governor rods or other parts that may cause an increase in engine speed.
- Danger of burning! Do not touch hot silencers, cylinders or cooling fins.
- Never bring hands and feet close to moving or rotating parts.

- Danger of poisoning! Device must not be operated in closed rooms.
- Do not use unsuitable fuels as they can be dangerous.

6.11 Safety devices

Safety devices serve to protect the user and must not be overridden or converted.

6.11.1 Overpressure valve

- When the hand spray gun is closed, the pressure relief valve opens and the high-pressure pump returns the water to the pump suction side. This prevents the permitted working pressure from being exceeded.
- The pressure relief valve is set and sealed at the factory. Adjustments can only be made by the customer service.

6.11.2 Thermal valve

- The thermal valve protects the high-pressure pump against non-permitted heating in circuit operation when the hand spray gun is closed.
- The thermal valve opens when the water temperature exceeds 55 - 60°C and discharges the hot water to the outside.

6.12 Residual risks

⚠ CAUTION

Despite intended use, non-obvious residual risks cannot be completely excluded.

- Injuries due to slipping on sewage
- Injuries or material damage caused by the high-pressure water jet

VII. Technical data

Engine	
Type	DHP212
Displacement	212 cm ³
Rated output at	4.3 (5.8) kW (hp)
Nominal speed	3600 min ⁻¹
Fuel tank	3.6 l
Fuel	Petrol, unleaded
Oil quantity - engine	0.6 l
Oil type - engine	SAE10W30 or SAE10W40

Technical data	HCP3000
Spark plug	F7RTC
Water connection	
Hose diameter	13 mm
Max. supply temperature	40 °C
Max. supply pressure	0.5 (5) MPa (bar)
Pump	
Rated pressure	22.1 (221) MPa (bar)
Max. allowable pressure	24.1 (241) MPa (bar)
Rated flow	9.5 l/min
Max. flow rate	10 l/min
Thermal valve opening temperature	55 - 60 °C
Input connection	G 3/4 (EU)
Output connection	M22x1.5
Cleaning agents	Only use cleaning agents approved for high pressure cleaners.
Weight	30kg

Noise emission

Measured value for noise determined according to EN 60335-2-79. The A-weighted noise level is typically:

Sound pressure level L_{pA}	90 dB(A)
Uncertainty K_{pA}	3 dB
Sound power level L_{WA}	105 dB(A)
Uncertainty K_{WA}	3 dB

Wear hearing protection to avoid hearing damage!

Vibration emission values (vector sum of three directions) determined per EN 60335-2-79:

Hand spray gun handle

Vibration value..... 0.828 m/s²

Hand spray gun, centre

Vibration value..... 2.068 m/s²

Uncertainty K.....0.85 m/s²

Note:

The vibration level specified in this instruction has been measured based on a measurement procedure standardised in EN 60335-2-79 and can be used for unit comparison. The specified vibration emission value can also be used for an initial estimation of the exposure.

⚠ WARNING

- The vibration level will vary depending on the use and may in some cases be higher than the value specified in these instructions. The vibration load could be underestimated if the device is regularly used in such a way. For an accurate estimation of the vibration exposure during a given working period, the times when the device is switched off or running but not actually in use should also be taken into account.
- This can significantly reduce the vibration load over the entire working period.

VIII. Unpacking

- Open the packaging and carefully remove the device.
- Remove the packaging material, as well as the packaging and transport safety devices (if present).
- Check whether the scope of delivery is complete.
- Check the device and accessory parts for transport damage. In the event of complaints the carrier must be informed immediately. Later claims will not be recognised.
- If possible, keep the packaging until the expiry of the warranty period.
- Familiarise yourself with the product by means of the operating instructions before using for the first time.
- With accessories as well as wearing parts and replacement parts use only original parts. Replacement parts can be obtained from your dealer.
- When ordering please provide our article number as well as type and year of manufacture for your equipment.

⚠ DANGER

The device and the packaging are not children's toys! Do not let children play with plastic bags, films or small parts! There is a danger of choking or suffocating!

⚠ WARNING

- During unpacking, transport and storage, bear in mind the high dead weight of the machine. These activities should be carried out by two people.
- Make sure the device is level on a flat surface during unpacking, installation and storage, operation, testing, maintenance and when not in use.

IX. Layout

9.1 Installing the bow-type handle (Fig. 3)

1. Fold the bow-type handle (1) onto the base frame of the device.
2. Tighten the star grip screw (6) using the existing screws (6.1).

9.2 Fitting the spraying nozzle unit (Fig. 1)

1. Position the spraying nozzle unit so that the holes provided for it are on top of each other.
2. Now fix the unit with four sleeves (5.1) and the fixing plugs (5).
3. To do this, first press the sleeves (5.1) into the holes provided and then secure them with the fixing plugs (5).

9.3 Fix the transport holder to the bow-type handle (Fig. 4)

1. Slide the transport bracket (4) from above into the already pre-assembled mounting on the tubular frame (7).

9.4 Fitting the wheels (Fig. 5)

1. Slide the axle (32) through the wheel (13) from the outside.
2. Now guide the axle (32) with wheel (13) from the outside into the tubular frame (7) and secure it with the spring split pin (33).
3. Repeat the process on the opposite side.

9.5 Fitting the hand spray gun, spraying lance (Fig. 6, 7, 8, 9)

⚠ DANGER

- Danger of injury! The device, supply lines, high-pressure hose and connections must be in perfect condition. If their condition is not perfect, the device must not be operated.
 - Always tighten the fixing by hand! A too loose connection can lead to disconnection and cause injury.
1. Connect the spraying lance (17) to the hand spray gun (23).
 2. Hand-tighten the screwed connection of the spraying lance (17).
 3. Fit the high-pressure hose (2) to the hand spray gun (23).
 4. Attach the high-pressure hose (2) to the water outlet (28) by turning the fixing.

X. Before commissioning

10.1 Filling/checking the engine oil (Fig.10)

ATTENTION

- The engine oil must be filled before the first use!
- Check the oil level before each start-up.
- Do not operate the device if no oil is visible on the oil dipstick (12.1).
- Do not overfill the engine oil. Too high an oil level can lead to engine damage.

- Refill the oil if necessary. Only use engine oil (SAE10W30 or SAE10W40).

1. Place the device on a flat, even surface and remove any dirt from the area around the oil inlet/dipstick (12)/oil tank cover with oil dipstick (12.1).
2. Open and remove the oil tank cover with oil dipstick (12.1) by turning anti-clockwise.
3. Fill the system with max. 400 ml four-stroke engine oil (SAE10W30 or SAE10W40) as required.
4. Check the oil level using the marks on the oil dipstick (12.1).
5. Place on the oil tank cover with oil dipstick (12.1) and close by turning clockwise.

10.2 Filling in fuel (Fig. 11)

⚠ DANGER

Risk of fire and explosion!

- Use standard unleaded petrol with max. 10% bioethanol component.
- Never refuel the device in enclosed spaces, with the engine running or hot.
- Do not smoke when refuelling.
- Do not use a two-stroke mixture.
- Do not refuel near naked flames or sparks.
- Do not spill fuel. Use funnel.
- Wipe up spilled fuel.
- After refuelling, close the canister and tank properly.

1. Open and remove the fuel tank cover (8) by turning anti-clockwise.
2. Place a filling hose with funnel (36) in the opening of the fuel tank (9).
3. Fill the fuel tank (9) with fuel up to max. 3-4 cm below the top edge.
4. Replace the fuel tank cover (8) and close the fuel tank (9) by turning clockwise.

10.3 Connecting the water supply (external) to the pump (Fig. 12)

⚠ WARNING

- If the inlet sieve is missing or damaged, do not operate the high pressure cleaner. Particles in the high-pressure jet can cause injury.
- The maximum water inlet pressure must not exceed 0.5 MPA.

ATTENTION

- The length of the free garden hose must be at least 3m between the inlet of the high pressure cleaner and a shut-off device, such as a Y shut-off coupling or other suitable shut-off valve.
 - Do not operate the high pressure cleaner without a water supply. If the high pressure cleaner is operated without water, the high pressure cleaner will be damaged.
1. Before connecting the garden hose (NOT included in the scope of delivery) to the water inlet (29), check the inlet sieve (40). Clean a contaminated inlet sieve (40), replace a damaged inlet sieve (40, Fig. 2).

2. To remove all impurities, run water through the garden hose for 30 seconds. Shut off the water. Important: Do not suction stagnant water for the water supply. Only use water up to max. 40° C.
3. Fit the hose connection adapter (38) on the water inlet (29).
4. The garden hose (NOT included in the scope of delivery) can be equipped with the enclosed quick connector (37).
5. Connect the garden hose (NOT included in the scope of delivery) to the water inlet (29). The hose must not be longer than 15 m.
6. Check that the hose is tightly fitted.

10.4 Self-suction from open tanks/containers and natural bodies of water

⚠ DANGER

- Never suck up water from a drinking water tank.
- Never suck up liquids containing solvents such as paint thinner, petrol or oil. Solvent spray is highly flammable, explosive and toxic.

Use the self-priming accessories (not included in scope of delivery) consisting of:

- Suction filter
- 3 m reinforced vacuum hose

With this accessory, the device can take in water max. 0.5 m above the water level. This can last about 1 minute.

1. Submerge the 3 m vacuum hose completely under water to displace the air.
2. Connect the vacuum hose to the device and ensure that the suction filter remains under water.
3. Run the device with the hand spray gun removed until water flows evenly from the high-pressure hose.
4. If water does not come out after 1 minute, switch off the device and check all connections. Once the water is flowing, turn off the device and connect the hand spray gun and spraying lance to start work.

It is important that the hose and couplers are of good quality, connected tightly and that the seals are undamaged and inserted straight. Leaky connections can hinder suction.

XI. Operation

Check the device to make sure that all of the following steps have been performed:

1. Before commissioning the device, read and understand the operating manual completely.
2. Check that the bow-type handle (1) is tightly fitted.
3. Check that oil has been poured into the oil inlet/dipstick to the specified level.
4. Pour the specified type of petrol into the fuel tank (9).
5. Check that the hose connections are tightly fitted.
6. Check that the high-pressure hose (2) has no kinks, cracks or other damage.

7. Have a suitable water connection with sufficient flow ready.
8. Ensure the device is level.
9. Switch on the water supply.

ATTENTION

- Do not switch on the pump if the water supply is not connected or switched on.
- Select the required nozzle (3) and insert it in the spraying lance (17). (Fig. 7)

11.1 Starting the engine

ATTENTION

- At initial start-up, oil level (SAE10W30 or SAE10W40) and fuel (unleaded regular petrol) must be filled in.

1. Check fuel level and engine oil, top up if necessary.
2. Ensure the device has sufficient ventilation.
3. Make sure that the spark plug / spark plug connector (31) is secured.

⚠ CAUTION

- When starting with the pull cable starter (18), injuries to the hand can occur due to sudden kick-back.

11.1.1 Cold start (Fig. 13)

1. Set the choke lever (20) to the "Choke" position.
2. Set the on/off switch (11) to the "I/ON" position.
3. Open the fuel valve (19).
4. Start the engine with the pull cable starter (18). Pull the handle strongly for this. If the engine does not start, pull the handle again.
5. After starting the engine, let the machine run for a few seconds and then set the choke lever (20) to "Run".

11.1.2 Warm start (Fig. 13)

1. Set the choke lever (20) to the "Run" position.
2. Set the on/off switch (11) to the "I/ON" position.
3. Start the engine with the pull cable starter (18). Pull the handle strongly for this.

11.1.3 After starting the engine (Fig.1)

1. Flip the trigger lock (24) on the hand spray gun (23).
2. Hold the hand spray gun (23) in a safe direction and pull the trigger (25). This cleans the pump system of air and impurities.

11.2 Switch off the engine (Fig. 13)

1. Allow the device to run for a short time without load before switching it off so that the device can "cool down".
2. Set the on/off switch (11) to the "0/OFF" position.

- Close the fuel valve (19).

11.2.1 After shutting off the engine

- Connect the water supply.
- Pull the trigger (25) until the device is depressurized.

11.3 Setting the working pressure and flow rate

With this device, the working pressure and flow rate are fixed and cannot be adjusted.

11.4 Changing the nozzle (Fig. 7)

⚠ DANGER

- Before changing the nozzle, switch off the device and pull the trigger (25) until the device is depressurized.

11.4.1 Using the spray nozzles (Fig. 7)

The quick-release connector on the spraying lance (17) can be used to switch between four nozzles (3).

Proceed as follows to change the nozzles (3):

- Pull back the ring of the quick-release connector and pull off the nozzle (3).
- Select the required nozzle (3):
- Soft jet: 40° (white) or 25° (green)
- Hard jet: 0° (red)
- Cleaning agent: black
- Pull the ring back, insert the selected nozzle (3) and release the ring. Pull on the nozzle (3) to check the tight fit.
- The best cleaning results are achieved when the nozzle (3) is held at a distance of 20 to 60 cm from the surface to be cleaned. If the distance is too short, the sprayed surface can be damaged.
- When cleaning car tyres, maintain a distance of at least 30 cm.

11.5 Operation with cleaning agents

⚠ WARNING

- Switch off the device before carrying out any setting or maintenance work.

ATTENTION

Unsuitable cleaning agents can damage the device and the object to be cleaned.

- Only use recommended cleaning agents that are suitable for high pressure cleaners. This device is intended for use with cleaning agents recommended by the manufacturer. The use of other cleaning agents or chemicals may have a negative effect on the safety of the machine.

- Recommended cleaning agents are primarily agents that are suitable for use with high pressure cleaners. These are available in DIY and car accessories stores, among others.

ATTENTION

Cleaning agents can be harmful to the environment.

- Observe the manufacturer's instructions when using and disposing of the cleaning agent and waste water.

Proceed as follows to work with cleaning agents:

- Prepare the cleaning agent solution according to the manufacturer's instructions.
- Read the instructions for using the nozzles (3) (see 11.4.1).
- Check that the nozzle (3) for cleaning agent (black) has been inserted.
- Open the filler cap for the cleaning agent tank (16).
- Fill the cleaning agent tank (15) with cleaning agent.

ATTENTION

- Cleaning agent must not be applied with the high-pressure nozzles (3) (white, green or red).

- Check that the garden hose is also connected to the water inlet (29) (see 10.3).
- Check whether the high-pressure hose (2) is connected to the hand spray gun (23) and the water outlet (28) (see 9.5).
- Insert nozzle (3) for cleaning agent (black) on spraying lance (17) (see 11.4.1).
- Then start the engine (see 11.1).

11.5.1 Recommended cleaning method

- Loosen dirt: Spray on cleaning agent sparingly and leave to act for 1 - 5 minutes, but do not allow to dry.
- Remove dirt: Rinse off loosened dirt with a high-pressure jet.

11.5.2 After operation with cleaning agent

- After operating with cleaning agent, clean the cleaning agent tank (15) and the connected hoses.

ATTENTION

Do not leave the cleaning agent in the cleaning agent tank (15)!

- Empty the cleaning agent tank (15) after operation.

To clean the cleaning agent tank (15) and the high-pressure pump (30), proceed as follows:

- Pull the trigger (25) of the hand spray gun (23) until the cleaning agent tank (15) is empty.
- Fill the cleaning agent tank (15) with clear water.
- Insert the cleaning agent nozzle (3) (black) on the spraying lance (17).

4. Start up the high pressure cleaner as described in chapter 10.
5. Rinse the high pressure cleaner with clear water for several minutes.

11.6 Interrupting operation

- Release the trigger (25) of the hand spray gun (23).

Note:

When the trigger (25) of the hand spray gun (23) is released, the engine continues to idle.

1. Switch off the engine during longer interruptions (several minutes) (see 11.2).
2. Pull the trigger (25) until the device is depressurized.
3. Secure the hand spray gun (23) with the trigger lock (24) against unintentional opening.

11.7 Finishing work

1. Switch off the engine at the end of work (see 11.2).
2. Shut off the water supply to the high pressure cleaner.
3. Pull the trigger (25) until the device is depressurized.
4. Secure the hand spray gun (23) with the trigger lock (24) against unintentional opening.
5. Unscrew the water supply hose from the device.

XII. Transport

⚠ CAUTION

Risk of injury and damage!

- Note the weight of the device during transport.

12.1 Preparation for transport

Note:

Dispose of petrol in an environmentally friendly manner!

1. Empty the fuel tank (9) with a fuel suction pump (not included in the scope of delivery).
2. To ensure that no petrol remains in the carburettor (10), the remaining petrol in the carburettor (10) must be drained out. To do this, place a suitable container (not included in the scope of delivery) under the carburettor (10) and open the petrol drain screw (41). Fig.16
3. Drain the engine oil from the warm engine (as described).
4. Remove the spark plug connector (31) from the spark plug.
5. Wind up the high-pressure hose (2) and place it in the hose holder (27).
6. Insert the spraying lance (17) into the transport bracket (4) and hang the hand spray gun (23) into the transport bracket (4).
7. Slide the device by the bow-type handle (1).

8. When transporting the device in vehicles, secure it against rolling away, slipping and tipping, for example with tension straps, in accordance with the applicable directives.

XIII. Cleaning

⚠ DANGER

Danger of injury due to unintentional start-up of the device.

- Before working on the device, turn the engine switch to “0/Off” and remove the spark plug connector.

Danger of burning

- Do not touch hot silencers, cylinders or cooling fins.

⚠ WARNING

- Switch off the device before carrying out any setting or maintenance work.
- Remove the spark plug connector (31).

ATTENTION

- Switch off the device immediately and contact your customer service:
 - In the event of unusual vibrations or noises.
 - If the engine seems overloaded or misfires.
- Keep protective devices, air vents and the engine housing as free of dust and dirt as possible. Rub the device clean with a dry cloth or blow it off with compressed air at low pressure.
- We recommend that you clean the device directly after every use.
- Clean the device at regular intervals using a damp cloth and a little soft soap. Do not use chemical cleaning agents or solvents. These could damage the plastic parts of the device. Make sure that no water penetrates the device interior.

13.1 Nozzle cleaning

If there is a pulsating sensation when the trigger (25) is pressed, the nozzle (3) is potentially dirty or clogged and should be cleaned immediately.

1. To clean the nozzle (3), switch off the engine and stop the water supply.
2. Depressurize the device (see 11.6).
3. Remove the nozzle (3) from the spraying lance (17). Make sure that the nozzle (3) points away from you in a safe direction.
4. Use the nozzle cleaner needle (34) or a small paper clip to remove debris from the nozzle (3).
5. Rinse the nozzle (3) with clear water.
6. Refit the nozzle (3) to the spraying lance (17).
7. Start the water supply and start the device.

13.2 Draining water

ATTENTION

Risk of damage!

- Freezing water in the device can destroy parts of the device.

In winter, store the device preferably in a heated room.

When storing in an unheated room, proceed as follows:

1. Unscrew the water supply hose and high-pressure hose (2).
2. Let the device run for max. 1 minute until the pump and lines are empty.

XIV. Maintenance

⚠ WARNING

- Switch off the device before carrying out any setting or maintenance work.
- Remove the spark plug connector (31).

⚠ DANGER

Danger of injury due to unintentional start-up of the device.

- Before working on the device, turn the engine switch to "0/Off" and remove the spark plug connector.

Danger of burning

- Do not touch hot silencers, cylinders or cooling fins.

14.1 Maintenance intervals

Before commissioning:

1. Check the oil level on the oil tank cover with oil dipstick (12.1).
2. If the oil is milky (water in the oil), contact customer service immediately.
3. Check the high-pressure hose (2) for damage (danger of bursting). Replace a damaged high-pressure hose (2) immediately.

Every 25 operating hours:

1. Check the oil level on the oil tank cover with oil dipstick (12.1).
2. If the oil is milky (water in the oil), contact customer service immediately.

Every 50 operating hours:

1. Check the oil level on the oil tank cover with oil dipstick (12.1).
2. If the oil is milky (water in the oil), contact customer service immediately.
3. Clean the air filter.
4. Check the fasteners between the engine and the frame for cracks and have cracked fasteners replaced by customer service.

14.2 Maintenance work

14.2.1 Changing the engine oil (Fig. 10/14)

Note:

Dispose of used oil in an environmentally friendly manner!

The engine oil change should be carried out while the engine is at operating temperature.

1. Provide a collecting container for approx. 1 litre of oil.
2. Place the device on a suitable surface.
3. Open the oil drain screw (39) (Fig. 14).
4. Drain the engine oil into the collection container provided.
5. To speed up the draining of the engine oil, you can open the oil tank cover with oil dipstick (12.1).
6. After the used oil has drained out, close the oil drain screw (39) and put the device back on level ground.
7. Fill engine oil up to the top marking on the oil dipstick (12.1).

For oil type and filling quantity, see Technical Data.

ATTENTION

- To check the oil level, do not screw in the oil tank cover with oil dipstick (12.1), but only insert it up to the thread.

14.2.2 Air filter (Fig. 1)

Clean the air filter (21) regularly, replace if necessary.

1. Remove the air filter cover. Pull carefully on the edges of the air filter (21).
2. Remove the contaminated filter element.
3. Knock out the contaminated filter element or blow it out with compressed air at low pressure.
4. Replace the filter element and the air filter cover.

14.2.3 Spark plug (Fig. 14)

Check the spark plug / spark plug connector (31) for contamination for the first time after 20 operating hours and clean it with a copper wire brush if necessary. Then service the spark plug every 50 operating hours.

1. Remove the spark plug connector (31) from the spark plug by turning it.
2. Remove the spark plug with the enclosed spark plug wrench (35).
3. The re-assembly takes place in reverse order.

14.3 Service information

With this product, it is necessary to note that the following parts are subject to natural or usage-related wear, or that the following parts are required as consumables.

Wearing parts*: Spark plug, high-pressure hose, spraying lance, nozzles, air filter

* may not be included in the scope of supply!

XV. Storage

⚠ CAUTION

Risk of injury and damage!

- Note the weight of the device during transport.

Store the device and its accessories in a dark, dry and frost-free place that is inaccessible to children. The optimum storage temperature is between 5 and 30°C.

Cover the device to protect it from dust or moisture.

Store the operating manual with the device.

15.1 Preparation for storage

Note:

Dispose of petrol in an environmentally friendly manner!

1. Empty the fuel tank (9) with a fuel suction pump (not included in the scope of delivery).
2. To ensure that no petrol remains in the carburettor, the remaining petrol in the carburettor must be drained out. To do this, place a suitable container (not included in the scope of delivery) under the carburettor and open the petrol drain screw (41). Fig.16:
3. Change the oil at the end of every season. To do so, remove the used engine oil from a warm engine and refill with fresh oil.
4. Remove the spark plug. Fill approx. 20 ml of oil into the cylinder using an oil can (not included in scope of delivery). Pull the pull cable starter (18) slowly so that the oil coats the inside of the cylinder. Attach the spark plug again.
5. Open the star grip screws (6) and fold the device in (Fig. 15).
6. Store the device in a well-ventilated place or area.

XVI. Disposal and recycling

The device is supplied in packaging to avoid transport damages. This packaging is raw material and can thus be used again or can be reintegrated into the raw material cycle.

The device and its accessories are made of different materials, such as metals and plastics. Take defective components to special waste disposal sites.

Check with your specialist dealer or municipal administration!

XVII. Troubleshooting

⚠ WARNING

Danger of injury due to unintentional start-up of the device!

- Before working on the device, turn the on/off switch (11) to the "Off" position and remove the spark plug connector (31).

⚠ WARNING

Danger of burning!

- Do not touch hot silencers, cylinders or cooling fins.

ATTENTION

- If the fault cannot be rectified, the device must be checked by customer service.

Fault	Possible cause	Remedy
Engine cannot be started	Automatic oil cut-off starts.	Check oil level, fill with engine oil.
	Spark plug sooty	Clean or replace spark plug.
	No fuel	Top up with fuel.
	Spark plug connector is disconnected	Connect the spark plug connector to the spark plug.
	Spark plug connector is damaged	Contact customer service.
Engine is difficult to start	Ignition does not work	Contact customer service.
	Out-of-date fuel or water in fuel	Drain fuel and fill with new fuel.
	Spark plug does not produce an ignition spark	Contact customer service.
Engine has too little power and vibrates excessively	Carburettor incorrectly adjusted	Contact customer service.
	Contaminated air filter	Clean the air filter.
Engine dies during operation	No fuel	Top up with fuel.
Engine loses power during operation	Engine speed is too low	Operate the trigger slower. If the fault persists, contact Customer Service.

Device does not build up pressure	Nominal speed of the engine too slow	Check the nominal speed of the engine; contact customer service.
	Low-pressure nozzle fitted	Fit the high-pressure nozzle.
	Nozzle clogged / washed out	Clean / renew nozzle
	Suction filter clogged	Clean the suction filter.
	Air in the system	Bleed the device (see "Before commissioning").
	Water supply volume too low	Check the water supply volume.
	Supply line to the high-pressure pump leaking or clogged	Check all supply lines to the high-pressure pump. Contact customer service.
	Pump is defective	Contact customer service.
Device leaks, water drips from the bottom of the device	The high-pressure pump leaks	A maximum of 3 drops / minute is permissible. In case of severe leakage, have the device checked by customer service.
Cleaning agent is not sucked in	High-pressure nozzle fitted	Fit the low-pressure nozzle.
	Cleaning agent hose leaking or blocked	Check or clean the cleaning agent hose


ALDI
FERREX®

Petrol high pressure cleaner

Warranty Details

REGISTER YOUR PURCHASE AT www.aldi.com.au/en/about-aldi/product-registration/ TO KEEP UP-TO-DATE WITH IMPORTANT PRODUCT INFORMATION

The product is guaranteed to be free from defects in workmanship and parts for a period of 36 months from the date of purchase. Defects that occur within this warranty period, under normal use and care, will be repaired, replaced or refunded at our discretion. The benefits conferred by this warranty are in addition to all rights and remedies in respect of the product that the consumer has under the Competition and Consumer Act 2010 and similar state and territory laws.

Our goods come with guarantees that cannot be excluded under the Australian Consumer Law. You are entitled to a replacement or refund for a major failure and for compensation for any other reasonably foreseeable loss or damage. You are also entitled to have the goods repaired or replaced if the goods fail to be of acceptable quality and the failure does not amount to a major failure.

AFTER SALES SUPPORT

1300 855 831

AUS Hotline Costs: Local rate for landline calls*
*Charges may vary dependent upon network operator or mobile network provider.

support@schepach.com.au

MODEL: HCP3000 PRODUCT CODE: 702499 09/2022





Repair and Refurbished Goods or Parts Notice

Unfortunately, from time to time, faulty products are manufactured which need to be returned to the Supplier for repair.

Please be aware that if your product is capable of retaining user-generated data (such as files stored on a computer hard drive, telephone numbers stored on a mobile telephone, songs stored on a portable media player, games saved on a games console or files stored on a USB memory stick) during the process of repair, some or all of your stored data may be lost.

We recommend you save this data elsewhere prior to sending the product for repair.

You should also be aware that rather than repairing goods, we may replace them with refurbished goods of the same type or use refurbished parts in the repair process.

Please be assured though, refurbished parts or replacements are only used where they meet ALDI's stringent quality specifications.

If at any time you feel your repair is being handled unsatisfactorily, you may escalate your complaint. Please telephone us on SUPPLIER TELEPHONE or write to us at:

RossMac Pty. Ltd.

Unit 6, 4 Ovata Drive, Tullamarine, Victoria, 3043

Telephone: 1300 855 831 (Monday - Friday 8:00am-6:00pm)

Email: support@scheppach.com.au

AFTER SALES SUPPORT

  1300 855 831

AUS Hotline Costs: Local rate for landline calls*
*Charges may vary dependent upon network operator or mobile network provider.

 support@scheppach.com.au

MODEL: HCP3000 PRODUCT CODE: 702499 09/2022

3
YEARS
WARRANTY