



User Manual

Contents

- Overview03
- Package contents/part list.....06
- Explanation of symbols07
- Introduction.....08
- Layout.....09
- Scope of delivery10
- Proper use.....11
- Safety instructions.....11
- Technical data14
- Unpacking16
- Before commissioning.....17
- Assembly17
- Starting operation.....18
- Transport.....20
- Cleaning and maintenance20
- Storage.....21
- Electrical connection21
- Repair & ordering spare parts22
- Troubleshooting23
- Disposal and recycling.....24
- Warranty details25
- Repair and refurbished goods or parts notice26

FERREX® HIGH PRESSURE WASHER

ALDI guarantees that our exclusive brand products are developed to our stringent quality specifications. If you are not entirely satisfied with this product, please return it to the nearest ALDI store within 60 days from the date of purchase, for a full refund or replacement, or take advantage of our after sales support by calling the supplier's Customer Service Hotline.



Made in China

FERREX® is a registered trademark of ALDI Stores

DISTRIBUTED BY:

ALDI STORES
1 SARGENTS ROAD
MINCHINBURY NSW 2770
www.aldi.com.au

AFTER SALES SUPPORT

837775

1300 855 831

support@scheppach.com.au

MODEL:
F-HPW1600

11/2024

5 YEAR WARRANTY

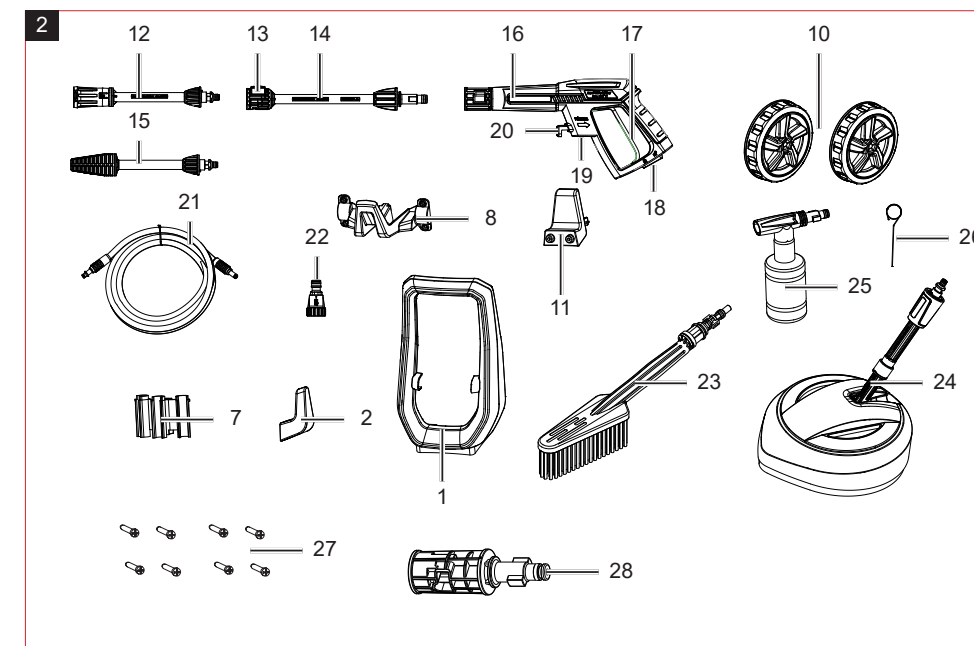
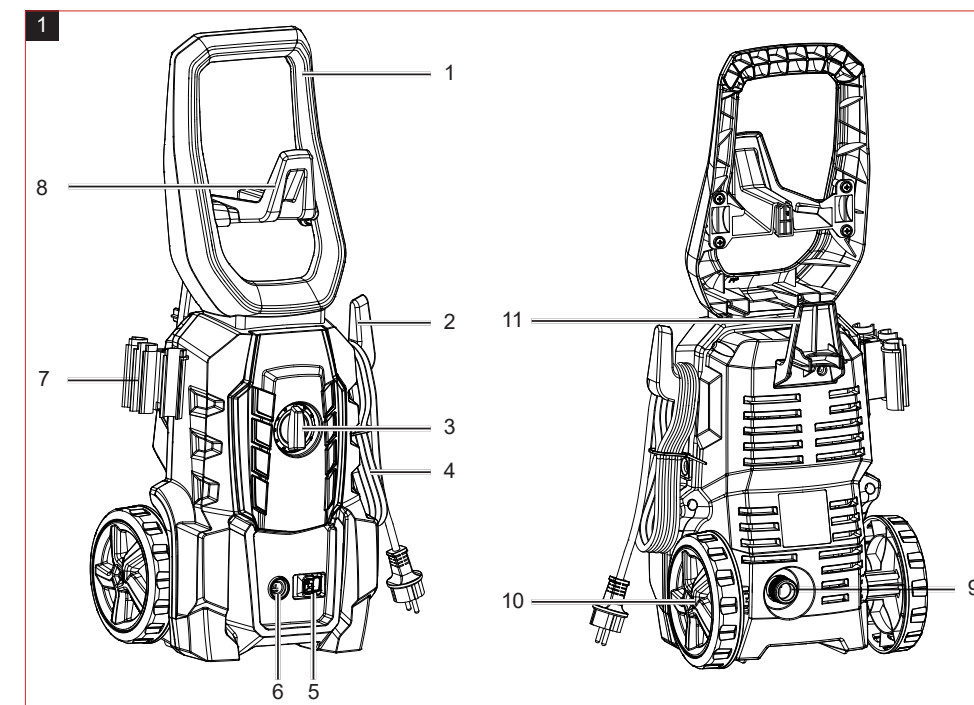


Original instructions
CAUTION: Read the instructions before using the machine



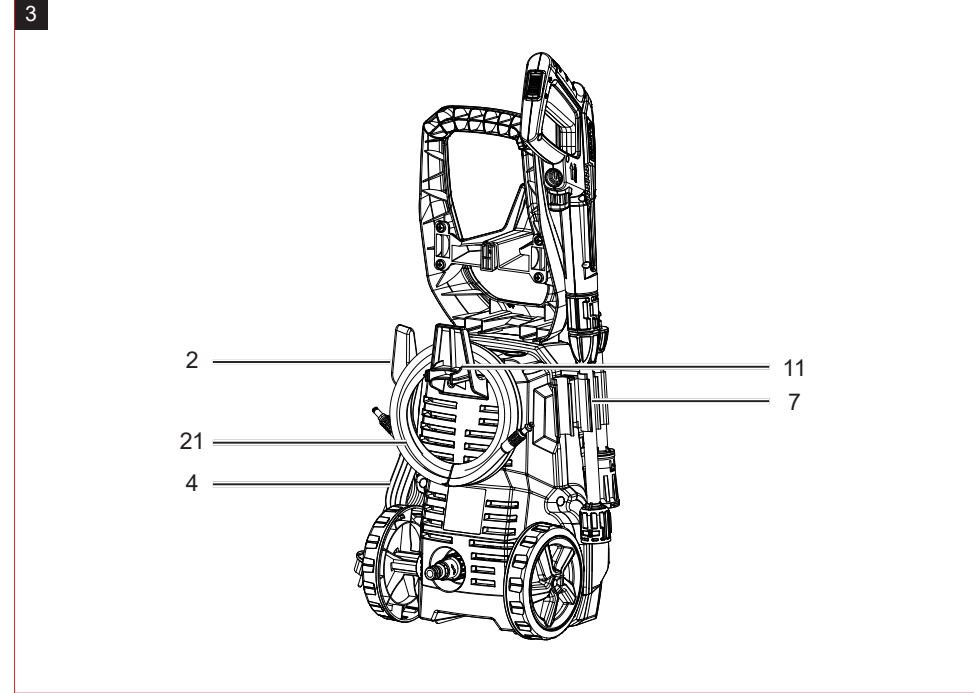
Dok./Rev.-Nr. 836221_2024-03-11

Overview



Package contents/part list

- 1 Electrical high-pressure cleaner
- 2 Bow-type handle
- 3 Holder for mains connection cable
- 4 Holder for accessories
- 5 Holder
- 6 Wheel, 2x
- 7 Holder for high-pressure hose
- 8 Variable nozzle
- 9 Lance
- 10 Turbo nozzle
- 11 Spray gun
- 12 High-pressure hose
- 13 Water connection coupling
- 14 Washing brush
- 15 Patio cleaner
- 16 Spray bottle
- 17 Gerni adapter
- 18 Nozzle cleaning needle
- 19 Screw, 8x
- 20 Operating manual
- 21 Warranty certificate



Explanation of Symbols

	General note! Observe and understand all safety notes and hints in this manual.
	Read the operating instructions to reduce the risk of injury.
	Wear safety goggles.
	Wear ear protection. The impact of noise can cause damage to hearing.
	This high pressure washer is not suitable for connecting to the drinking water network.
	Warning! High-pressure jets can be dangerous if not used properly. Do not direct the jet at persons, animals, live electrical equipment or the pressure washer itself.
	Warning! Before installation, cleaning, alterations, maintenance, storage and transport switch off the high pressure washer and disconnect it from the power supply.
	Class II symbol: This high pressure washer is designed with dual insulation and does not need to be connected to an earthed power socket.
	Sound power level (guaranteed).
	Warranty period.
	Regulatory Compliance Mark (RCM).
	Made in China
	Warranty class.
	AC symbol: alternating current
	Attention! Contents that provide information concerning your safety
	Caution! Failure to follow these instructions may cause risk of injury!
	Warning! Failure to follow these instructions may cause danger to life or danger of serious injuries!

I. Introduction

Congratulations on choosing to buy a FERREX® product.

All products brought to you by FERREX® are manufactured to the highest standards of performance and safety, and as part of our philosophy of customer service and satisfaction, are backed by our comprehensive **5 Year Warranty**.

We hope you will enjoy using your purchase for many years to come.

Note:

According to the applicable product liability law the manufacturer of this high pressure washer is not liable for damages which arise on or in connection with this high pressure washer in case of:

- improper handling,
- non-compliance with the instructions for use,
- repairs by third party, non-authorised skilled workers,
- installation and replacement of non-original spare parts,
- improper use,
- failures of the electrical system due to the non-compliance with the electrical specifications and the Australian regulations.

Recommendations:

Read the entire text of the operating instructions prior to the assembly and operation of the high pressure washer.

These operating instructions are intended to make it easier for you to get familiar with your high pressure washer and utilise its intended possibilities of use.

The operating instructions contain important notes on how to work safely, properly and economically with your high pressure washer and how to avoid dangers, save repair costs, reduce downtime, and increase the reliability and working life of the high pressure washer.

In addition to the safety regulations contained herein, you must in any case comply with the applicable regulations of your country with respect to the operation of the high pressure washer.

Put the operating instructions in a clear plastic folder to protect them from dirt and humidity, and store them near the high pressure washer. The instructions must be read and carefully observed by each operator prior to starting the work. Only persons who have been trained in the use of the high pressure washer and have been informed on the related dangers and risks are allowed to use the high pressure washer.

In addition to the safety notes contained in the present operating instructions and the special regulations of your country, the generally recognised technical rules for the operation of this high pressure washer must be observed.

II. Layout (Fig. 1 + 2)

- 1 Bow-type handle
- 2 Holder for mains connection cable
- 3 On/off switch
- 4 Mains cable
- 5 Locking button
- 6 Connection for high-pressure hose
- 7 Holder for accessories
- 8 Holder
- 9 Water connection
- 10 Wheel
- 11 Holder for high-pressure hose
- 12 Variable nozzle
- 13 Nozzle release button
- 14 Lance
- 15 Turbo nozzle
- 16 Spray gun
- 17 Actuation lever
- 18 Unlocking knob
- 19 Spray gun high-pressure hose connection
- 20 Locking button
- 21 High-pressure hose
- 22 Water connection coupling
- 23 Washing brush
- 24 Patio cleaner
- 25 Spray bottle
- 26 Nozzle cleaning needle
- 27 Screw
- 28 Gerni adapter

III. Scope of delivery

Electrical high-pressure cleaner	(1x)
Bow-type handle	(1x)
Holder for mains connection cable	(1x)
Holder for accessories	(1x)
Holder	(1x)
Wheel	(2x)
Holder for high-pressure hose	(1x)
Variable nozzle	(1x)
Lance	(1x)
Turbo nozzle	(1x)
Spray gun	(1x)
High-pressure hose	(1x)
Water connection coupling	(1x)
Washing brush	(1x)
Patio cleaner	(1x)
Spray bottle	(1x)
Gerni adapter	(1x)
Nozzle cleaning needle	(1x)
Screw	(8x)
Warranty Certificate	(1x)
Operating manual	(1x)

- Open the packaging and take out the high pressure washer carefully.
- Remove the packaging material as well as the packaging and transport bracing (if available).
- Check that the delivery is complete.
- Check the high pressure washer and accessory parts for transport damage.
- If possible, store the packaging until the warranty period has expired.

⚠ Attention!

The high pressure washer and packaging materials are not toys!

**Children must not be allowed to play with plastic bags, film and small parts!
There is a risk of swallowing and suffocation!**

IV. Proper use

The electrical high-pressure cleaner is used:

- For cleaning machines, vehicles, buildings, tools, façades, terraces, garden tools, etc. with high-pressure water jets.
- With original accessories and spare parts.
- In compliance with the manufacturer's instructions for the object to be cleaned.

The product may only be used in the intended manner. Any use beyond this is improper. The user/operator, not the manufacturer, is responsible for damages or injuries of any type resulting from this.

An element of the intended use is also the observance of the safety instructions, as well as the assembly instructions and operating information in the operating manual.

Persons who operate and maintain the product must be familiar with the manual and must be informed about potential dangers.

The liability of the manufacturer and resulting damages are excluded in the event of modifications of the product.

The product may only be operated with original parts and original accessories from the manufacturer.

The safety, operating and maintenance specifications of the manufacturer, as well as the dimensions specified in the technical data, must be observed.

Please note that our products were not designed with the intention of use for commercial or industrial purposes. We assume no guarantee if the product is used in commercial or industrial applications, or for equivalent work.

The manufacturer is not liable for damage caused by an improper use or incorrect operation of this device.

V. Safety instructions

General safety instructions

- The product shall not be used by children. Children should not be left unattended, to ensure they do not play with the power tool.
- This machine is not intended for use by persons (including children) with reduced physical sensory or mental capabilities, or lack of experience and knowledge.
- Persons who are unfamiliar with the operating manual may not operate the product.

- High-pressure cleaners shall not be operated by untrained persons.
- In the event of a disruption or fault during use, switch the product off immediately and pull out the mains plug. Then read the Troubleshooting chapter.

Working with the product

⚠ Caution! It will help you avoid accidents and injuries:

High-pressure cleaners can be dangerous when used improperly. The jet must not be directed towards any persons, animals, active electrical equipment or the product itself.

- Only use the product upright and on a level and stable surface.
- Do not direct the jet at yourself or others to clean clothing or footwear.
- Wear suitable protective clothing and safety goggles to protect against splashing water or dirt.
- Do not use the product when other people are in range unless they are wearing protective clothing.
- Keep children away from the running engine.
- Do not use the product in the vicinity of combustible fluids or gases. There is a risk of fire or explosion if disregarded.
- Do not spray flammable liquids. There is a risk of explosion.
- If you come into contact with cleaning agent, rinse with plenty of clean water.
- Store the product in a dry place and out of reach of children.

⚠ Caution! In this way you avoid damage to the product and any personal injury resulting from it:

- Do not work with a damaged, incomplete or modified product without the consent of the manufacturer. Before commissioning, have a specialist check that the required electrical protective measures are in place.
- Do not use the product if the mains connection cable, the water supply hose or other important parts such as the high-pressure hose or the spray gun, are damaged.
- Protect the product against frost and running dry.
- High-pressure hoses, fixtures and couplings are important for machine safety. Only use high-pressure hoses, fixtures and couplings recommended by the manufacturer.
- To ensure machine safety, only use original spare parts from the manufacturer or spare parts approved by the manufacturer.
- The product may only be opened by an authorised electrician. In the event of re-

pair, always contact our service centre.

Electrical safety

⚠ Caution! To avoid accidents and injuries due to electric shock:

- If an extension lead is used, the plug and coupling must be watertight.

⚠ Unsuitable extension cables could be dangerous. There is a risk of persons being injured due to electric shock.

- Protect the electrical plug connections from moisture.
- If there is a risk of flooding, fit the plug connections in the flood-proof area.
- Ensure that the mains voltage corresponds to the specifications on the type plate.
- The mains connection must be carried out by an experienced electrician and meet the requirements of IEC 60364-1.
- Electrical connections must be made by an electrician in accordance with all local and national regulations.
- Only connect the product to a socket outlet with an RCD (residual current device) with a tripping current of no more than 30 mA.
- Before each use, check the product, mains connection cable and connectors for damage.
- If the mains connection cable for the product is damaged then it must be replaced by the manufacturer or their customer services personnel or by a similarly qualified person, in order to avoid hazards.
- Do not use the mains connection cable to pull the plug out of the outlet. Protect the mains connection cable from heat, oil and sharp edges.
- Do not carry or fasten the product by the mains connection cable.
- Unsuitable extension cables could be dangerous. If an extension cable is used, it must be suitable for outside use, the connection must be dry and must be raised off the ground. It is recommended to use a cable drum for this, keeping the socket at least 60 mm above the floor. Check the cable for damage.
- Pull out the mains plug before all work on the product, in work breaks and when not in use.
- Extension cables must not have a smaller conductor cross-section than 2 x 2.5 mm².
- Wear sturdy footwear to protect against electric shock.
- To protect against electric shock, only operate the product in an upright, standing position.
- Always switch off the mains disconnecter if the machine is left unattended.

AFTER SALES SUPPORT

13

Residual risks

The product has been built according to state-of-the-art and the recognised technical safety rules. However, individual residual risks can arise during operation.

Despite use as intended, specific risk factors cannot be entirely eliminated. Due to the design and layout of the machine, the following risks remain:

- Health hazard due to electrical power, with the use of improper electrical connection cables.
- Hearing damage if suitable hearing protection is not worn.
- Furthermore, despite all precautions having been met, some non-obvious residual risks may still remain.
- Residual risks can be minimised if the “Safety Instructions” and the “Intended Use” together with the operating manual as a whole are observed.
- Before performing setting or maintenance work, release the start button and pull out the power plug.

Warning! This power tool generates an electromagnetic field during operation. This field can impair active or passive medical implants under certain circumstances. In order to prevent the risk of serious or deadly injuries, we recommend that persons with medical implants consult with their physician and the manufacturer of the medical implant prior to operating the power tool.

VI. Technical data

AC motor	220-240 V~
Power	1600 W
Length of mains connection cable	5 m
Length of high-pressure hose	5 m
Weight	7 kg
Protection class	II
Protection category	IPX5
Design pressure / working pressure (p)	9 MPa / 90 bar
Max. permissible pressure (p max)	13.5 Mpa / 135 bar
Max. supply pressure (p max)	0.4 Mpa / 4 bar

Max. supply temperature (T in max)	50°C
Rated flow rate (Q)	6 l/min
Max. flow rate (Qmax)	7 l/min

Noise and vibration

⚠ WARNING! Noise can have serious effects on your health. If the machine noise exceeds 85 dB, please wear suitable hearing protection for you and persons in the vicinity.

The noise and vibration values have been determined in accordance with EN 60335-2-79.

Noise data

Sound pressure level L_{pA}	74.6 dB
Uncertainty K_{pA}	3 dB
Sound power level L_{WA}	88.3 dB
Guaranteed sound power level L_{WA}	92 dB
Uncertainty K_{WA}	3 dB

Vibration parameters

Vibration a_h	2.089 m/s ²
Uncertainty K	1.5 m/s ²

The specified total vibration value and the specified noise emission value have been measured in accordance with a standardised test procedure and can be used to compare one power tool with another.

The total noise emission values specified and the total vibration emission values specified can also be used for an initial estimation of the load.

△ WARNING! The noise emission values and vibration emission value can vary from the specified values during the actual use of the power tool, depending on the type and the manner in which the electric tool is used, and in particular the type of workpiece being processed.

Try to keep the stress as low as possible. Exemplary measures: the limitation of working hours. In doing so, all parts of the operating cycle must be taken into account (such as times in which the electric tool is switched off or times in which it is switched on, but is not running under a load).

VII. Unpacking

- Open the packaging and carefully remove the product.
 - Remove the packaging material, as well as the packaging and transport safety devices (if present).
 - Check whether the scope of delivery is complete.
 - Check the product and accessory parts for transport damage. In the event of complaints the carrier must be informed immediately. Later claims will not be recognised.
 - If possible, keep the packaging until the expiry of the warranty period.
 - Familiarise yourself with the product by means of the operating manual before using for the first time.
 - With accessories as well as wearing parts and replacement parts use only original parts. Spare parts can be obtained from your specialist dealer.
- When ordering please provide our article number as well as type and year of manufacture for the product.

△ WARNING!

The product and the packaging material are not children's toys! Do not let children play with plastic bags, films or small parts! There is a danger of choking or suffocating!

VIII. Before commissioning

In accordance with the applicable regulations, the high-pressure cleaner must never be operated in the drinking water network without a system separator. A suitable system separator in accordance with EN 12729 type BA must be used.

Water that has flowed through a system separator backflow prevention device is considered non-potable. A system separator is available from specialist dealers.

A system separator (backflow preventer) prevents water and cleaning agent from flowing back into the drinking water pipe.

- Use a standard 1/2" garden hose with at least 5 m length for the water inlet. Do not exceed 30 m length.
- Use the product with a domestic water connection with at least 500 l/h flow rate.
- You can also use the product independently of the water supply (e.g. rain barrel) thanks to the integrated water suction function. This function can only be used with a suction hose with filter basket. A suction hose with filter basket is not included in the scope of delivery.

IX. Assembly (Fig. 1 + 2)

1. Place the product upright on a level, firm surface.
2. Put the wheels (10) on the wheel axles so that they lock into place.
3. Slide the bow-type handle (1) onto the connection on the top of the product and fix it with two screws (27). Use a Phillips screwdriver for this (not included in the scope of delivery).
4. Attach the holder (8), with four screws (27) to the attachment points on the bow-type handle (1). Use a Phillips screwdriver for this (not included in the scope of delivery).
5. Attach the holder for high-pressure hose (11) to the back of the device with two screws (27). Use a Phillips screwdriver for this (not included in the scope of delivery).
6. Plug the holder for mains connection cable (2) and the holder for accessories (7) onto the two connection points on the side of the device.
7. Insert one of the high-pressure hose connection coupling plugs (21) into the spray gun high-pressure hose connection (19) and the other coupling plug into the high-pressure hose connection (6) so that they snap into place.

AFTER SALES SUPPORT

8. To remove the high-pressure hose (21), actuate the locking button (20) on the spray gun (16) and the locking button (5) on the product and pull out the high-pressure hose (21).
9. Screw the coupling for the water connection (22) onto the water connection (9).
10. Use a garden hose with quick coupling (not included in the scope of delivery) and connect it to the water connection coupling (22).
11. Depending on the work you want to do, connect the lance (14), the washing brush (23), the spray bottle (25) or the Gerni adapter (28) to the spray gun (16) by plugging it in and turning it (bayonet lock).
12. Once the lance (14) is mounted, connect either the variable nozzle (12), the turbo nozzle (15) or the patio cleaner (24) to the lance (14). To do this, insert the attachments into the lance (2) so that they latch into place. To remove the attachments, press the nozzle release button (13) on the front end of the lance (14) and pull the attachment off towards the front.

X. Starting operation (Fig. 1 + 2)

Attention!

Always make sure the product is fully assembled before commissioning!

Selecting attachments

Choose a suitable attachment depending on the work you need to do:

Variable nozzle (12): The variable nozzle (12) with its flat jet is particularly suitable for surface cleaning. The width of the water jet can be adjusted by turning the nozzle tip.

Turbo nozzle (15): With its rotating water jet, the turbo nozzle (15) is particularly suitable for removing stubborn dirt.

Washing brush (23):

The washing brush (23) is always used without applying pressure. It is suitable for cleaning smooth surfaces.

Patio cleaner (24)

The patio cleaner (24) is suitable for cleaning large flat surfaces outdoors.

Spray bottle (25)

Use the spray bottle (25) to spray cleaning agents that are permitted for high-pressure cleaners.

Gerni Adapter (28)

Use the Gerni Adapter (28) to attach Gerni brand accessories.

Switching on

⚠ WARNING! Pay attention to the recoil force caused by the emergent water jet. Ensure that you have secure footing and hold the spray gun (13) firmly. Otherwise, you could injure yourself or others.

⚠ WARNING! If there are leaks in the water system, switch off the product immediately with the On/Off switch (3) and disconnect the product from the mains with the mains connection cable. There is a risk of electric shock! Start connecting the water connections again.

NOTE: Do not operate the product with a closed water tap. Running dry will damage the product.

1. Ensure that the high-pressure cleaner is switched off at the On/Off switch (3).
2. Plug the mains plug into the socket.
3. Open the water tap fully.
4. Switch the product on with the On/Off switch (3). Always switch on the product only after you have connected all the water lines and they are leak-tight. The motor switches on until the necessary pressure is built up. After pressure build-up, the motor switches off.
5. Unlock the actuation lever (17) with the unlocking button (18).
6. Press the actuation lever (17) on the spray gun (16). The product motor starts automatically.
7. By releasing the actuation lever (17), the product switches off, the high pressure in the system is maintained.

Stop operation

1. Switch the product off with the On/Off switch (3). Pull out the mains plug.
2. Turn off the water tap.
3. Disconnect the high-pressure cleaner from the water supply.
4. Press the actuation lever (17) of the spray gun (16) to release the existing pressure in the system.

AFTER SALES SUPPORT

Self-priming function

You can also use the product independently of the water supply (e.g. rain barrel) thanks to the integrated water suction function. This function can only be used with a suction hose with filter basket (not included in the scope of delivery).

⚠ WARNING! The product itself must not be immersed in the open water source. There is a risk of persons being injured due to electric shock.

1. Plug the suction hose with filter basket onto the water connection coupling (22).
2. Hang the end with the filter basket into the water extraction point. Make sure you have a sufficient water supply and a safe water supply.

NOTE: Running dry will damage the product.

3. Remove the lance (14) from the spray gun (16). Press the actuation lever (17) of the spray gun (16) and only then switch on the product.
4. The product starts to draw in water and the air can escape.
5. When there is no more air in the product, you can release the actuation lever (17) of the spray gun (16). You can connect the attachment of your choice to the spray gun (16).

NOTE: The product should not be higher than the water take-off point.

XI. Transport (Fig. 1)

With the bow-type handle (1) extended, the product can be transported comfortably.

XII. Cleaning and maintenance

⚠ WARNING! Disconnect the mains plug before any work on the product. This includes connecting to the water supply or trying to fix leaks.

There is a risk of electric shock or injury from moving parts.

Maintenance

The high-pressure cleaner is maintenance-free.

Cleaning

⚠ WARNING! Do not spray the product with water or clean it under running water. There is a danger of electric shock and the product could be damaged.

- Keep protective devices, air vents and the motor housing as free of dust and dirt as possible. Rub the product clean with a clean cloth or blow it off with compressed air at low pressure.
- We recommend that you clean the product directly after every use.
- Clean the product at regular intervals using a damp cloth and a little soft soap. Do not use any cleaning products or solvents; they could attack the plastic parts of the product. Make sure that no water can penetrate the interior of the product. Water penetration increases the risk of an electric shock.

You can remove foreign objects from clogged nozzles with the nozzle cleaning needle (26).

Rinse the nozzles with water to remove foreign objects.

XIII. Storage (Fig. 3)

- Store the product and its accessories in a dark, dry and frost-free place that is inaccessible to children.
- Wind the mains cable (4) onto the holder for the mains connection cable (2).
- Stow the accessories on the holder for accessories (7) and the high-pressure hose (21) on the holder for high-pressure hose (11).
- The optimum storage temperature is between 5 and 30°C.
- Store the product in its original packaging.
- Cover the product to protect it from dust or moisture.
- Store the operating manual with the product.

XIV. Electrical connection

The electrical motor installed is connected and ready for operation. The connection complies with the applicable VDE and DIN provisions. The customer's mains connection as well as the extension cable used must also comply with these regulations.

Important information

In the event of overloading, the motor will switch itself off. After a cool-down period (time varies) the motor can be switched back on again.

AFTER SALES SUPPORT

Damaged electrical connection cable.

The insulation on electrical connection cables is often damaged.

This may have the following causes:

- Pressure points, where connection cables are passed through windows or doors.
- Kinks where the connection cable has been improperly fastened or routed.
- Places where the connection cables have been cut due to being driven over.
- Insulation damage due to being ripped out of the wall outlet.
- Cracks due to the insulation ageing.

Such damaged electrical connection cables must not be used and are life-threatening due to the insulation damage.

Check the electrical connection cables for damage regularly. Ensure that the connection cables are disconnected from electrical power when checking for damage.

Electrical connection cables must comply with the applicable VDE and DIN provisions. Only use connection cables of the same designation.

The printing of the type designation on the connection cable is mandatory.

AC motor:

- The mains voltage must be 220 - 240 V~.
- Extension cables up to 25 m long must have a cross-section of 1.5 mm².

Connection type Y

If it is necessary to replace the mains connection cable, this must be done by the manufacturer or their representative to avoid safety hazards.

XV. Repair & ordering spare parts

After repairs or maintenance, make sure that all safety-related parts are installed and are in perfect condition. All parts which may cause injury must be kept where they are inaccessible to children or others.

Connections and repairs

Connections and repair work on the electrical equipment may only be carried out by electricians.

Please provide the following information in the event of any queries:

- Type of current for the motor
- Machine data - type plate
- Engine data - type plate

Service information

With this product, it is necessary to note that the following parts are subject to natural or usage-related wear, or that the following parts are required as consumables.

Wearing parts*: Carbon brushes, washing brush

* may not be included in the scope of delivery!

XVI. Troubleshooting

Fault	Possible cause	Remedy
Heavy pressure fluctuations.	Nozzle dirty or clogged.	Rinse the nozzle with water. If necessary, clean the nozzle bore with the nozzle cleaning needle (26).
Product does not run.	Product switched off. On/off switch (3) switched off.	Switch the product on with the On/Off switch (3).
	Damaged mains connection cable.	Switch the product off and disconnect from the mains. Check for mains connection cable for damage. If necessary, have the mains connection cable replaced by an authorised specialist.
	Faulty power supply.	Check the electrical system for compliance with the specifications on the type plate.
Product has no pressure.	Water supply line pressure drop.	Check the water supply.
Leaks in the water system.	Connections not fitted correctly.	Switch the product off and disconnect from the mains. Connect the product to the water lines again.

XVII. Disposal and recycling

The equipment is supplied in packaging to prevent it from being damaged in transit. The raw materials in this packaging can be reused or recycled. The equipment and its accessories are made of various types of material, such as metal and plastic. Never place defective equipment in your household refuse. The equipment should be taken to a suitable collection center for proper disposal. If you do not know the whereabouts of such a collection point, you should ask in your local council offices.



ALDI

FERREX®

HIGH PRESSURE WASHER



Warranty Details

REGISTER YOUR PURCHASE AT www.aldi.com.au/en/about-aldi/product-registration/ TO KEEP UP-TO-DATE WITH IMPORTANT PRODUCT INFORMATION

The product is guaranteed to be free from defects in workmanship and parts for a period of 60 months from the date of purchase. Defects that occur within this warranty period, under normal use and care, will be repaired, replaced or refunded at our discretion. The benefits conferred by this warranty are in addition to all rights and remedies in respect of the product that the consumer has under the Competition and Consumer Act 2010 and similar state and territory laws.

Our goods come with guarantees that cannot be excluded under the Australian Consumer Law. You are entitled to a replacement or refund for a major failure and for compensation for any other reasonably foreseeable loss or damage. You are also entitled to have the goods repaired or replaced if the goods fail to be of acceptable quality and the failure does not amount to a major failure.

AFTER SALES SUPPORT

  **1300 855 831**

 **support@scheppach.com.au**

MODEL: F-HPW1600 PRODUCT CODE: 837775 11/2024

5

YEAR WARRANTY



HIGH PRESSURE WASHER

Repair and Refurbished Goods or Parts Notice

Unfortunately, from time to time, faulty products are manufactured which need to be returned to the Supplier for repair.

Please be aware that if your product is capable of retaining user-generated data (such as files stored on a computer hard drive, telephone numbers stored on a mobile telephone, songs stored on a portable media player, games saved on a games console or files stored on a USB memory stick) during the process of repair, some or all of your stored data may be lost.

We recommend you save this data elsewhere prior to sending the product for repair.

You should also be aware that rather than repairing goods, we may replace them with refurbished goods of the same type or use refurbished parts in the repair process.

Please be assured though, refurbished parts or replacements are only used where they meet ALDI's stringent quality specifications.

If at any time you feel your repair is being handled unsatisfactorily, you may escalate your complaint. Please telephone us on 1300 855 831 or write to us at:



RossMac Pty. Ltd.

Unit 6, 4 Ovata Drive, Tullamarine, Victoria, 3043, Australia

1300 855 831

support@schepach.com.au

AFTER SALES SUPPORT

  1300 855 831

 support@schepach.com.au

MODEL:F-HPW1600 PRODUCT CODE: 837775 11/2024

5

YEAR WARRANTY