

User Manual

Contents

- Content3
- Package contents/part list 6
- Introduction 9
- Layout10
- Scope of delivery11
- Intended use.....11
- General safety warnings.....11
- Technical data.....19
- Unpacking 21
- Working procedures21
- Before use 23
- Use 24
- Cleaning and care27
- Electrical connection 29
- Disposal and recycling31
- Troubleshooting32

FERREX®

PAINT SPRAY STATION

F-APS3000



ALDI GUARANTEES THAT OUR EXCLUSIVE BRAND PRODUCTS ARE DEVELOPED TO OUR STRINGENT QUALITY SPECIFICATIONS. IF YOU ARE NOT ENTIRELY SATISFIED WITH THIS PRODUCT, PLEASE RETURN IT TO THE NEAREST ALDI STORE WITHIN 60 DAYS FROM THE DATE OF PURCHASE, FOR A FULL REFUND OR REPLACEMENT, OR TAKE ADVANTAGE OF OUR AFTER SALES SUPPORT BY CALLING THE SUPPLIER'S CUSTOMER SERVICE HOTLINE.



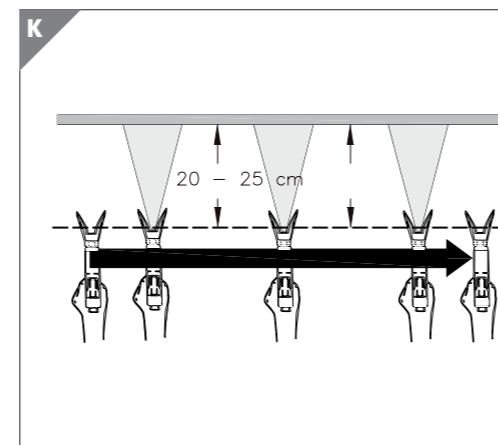
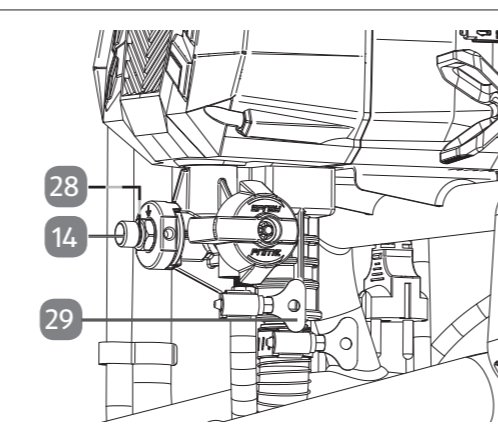
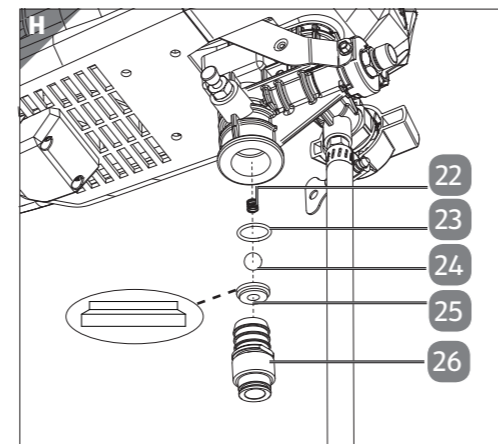
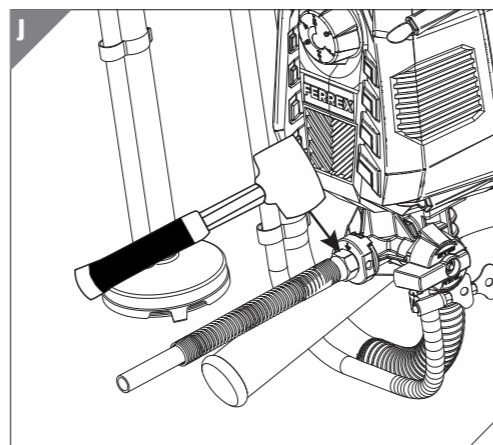
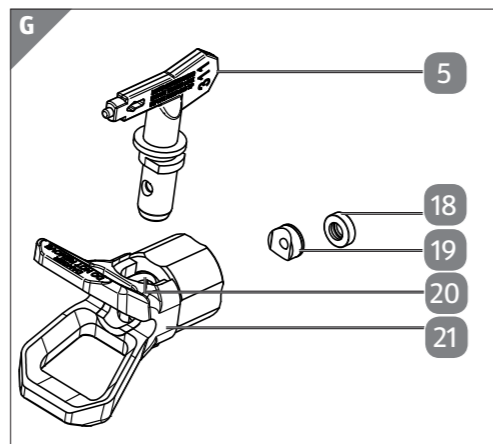
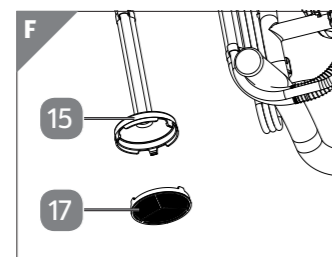
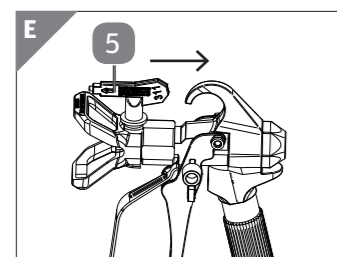
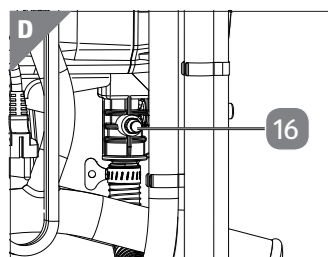
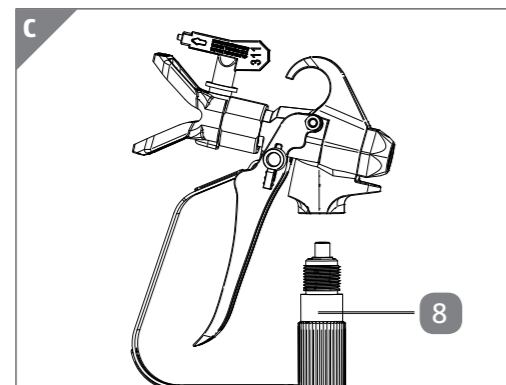
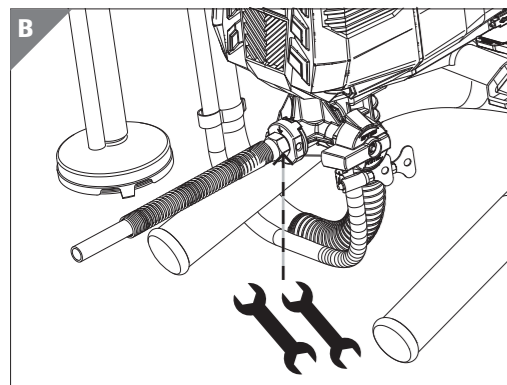
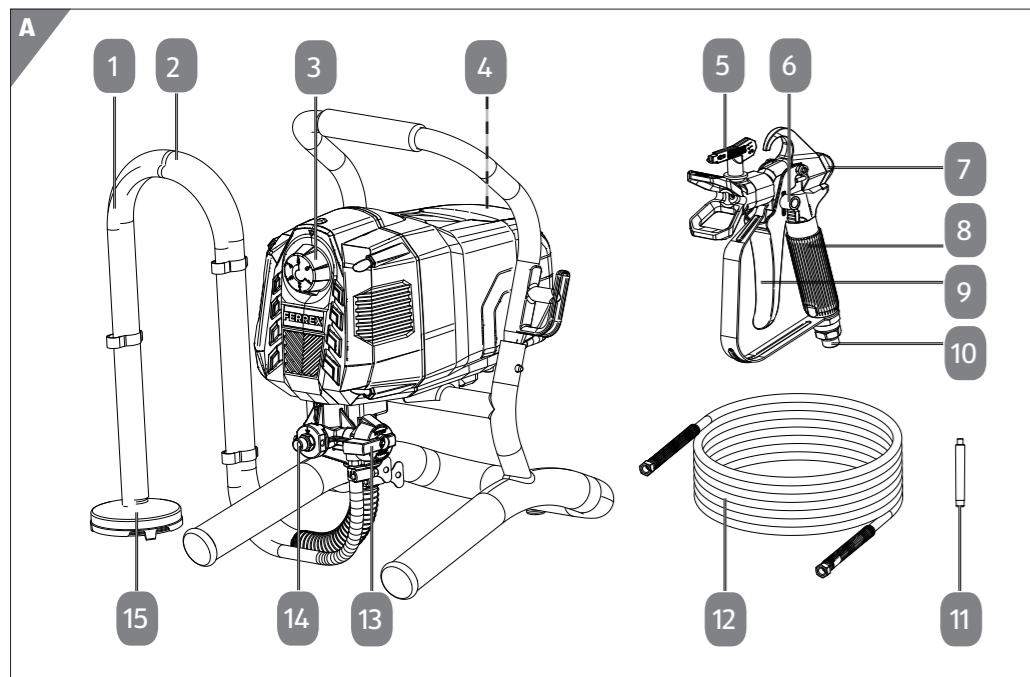
Made in China
FERREX® is a registered trademark of ALDI Stores
 DISTRIBUTED BY:
 ALDI STORES
 1 SARGENTS ROAD
 MINCHINBURY NSW 2770
 www.aldi.com.au

| | |
|---------------------------------|---------|
| AFTER SALES SUPPORT | 828141 |
| AU 1300 855 831 | |
| support@scheppach.com.au | |
| MODELL: F-APS3000 | 10/2023 |



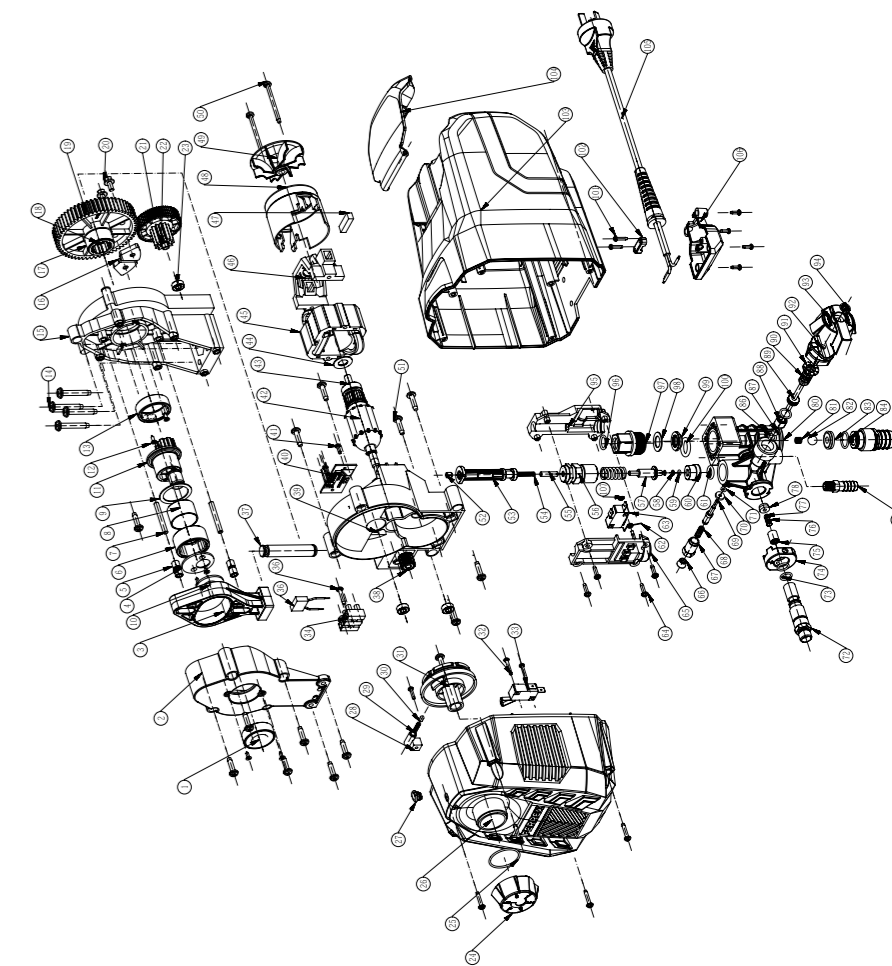
Translation of original instruction manual





Package contents/part list

- 1 1 x Paint Spray Station (Main Unit)
- 2 1 x High Pressure Pipe
- 3 1 x Gun Body
- 4 1 x Filter Element (1 x pre-assembled)
- 5 2 x Nozzle (311/517)
- 6 2 x Screw (3,5/9,5 mm)
- 7 1 x Instruction Manual
- 8 1 x Warranty card



Explanation of the symbols on the device

| | |
|---|--|
|  | Caution - Read the operating instructions to reduce the risk of injury! |
|  | Wear ear-muffs. The impact of noise can cause damage to hearing. |
|  | Wear a breathing mask. Dust which is injurious to health can be generated when working on wood and other materials. |
|  | Wear safety goggles. Sparks generated during working or splinters, chips and dust emitted by the device can cause loss of sight. |
|  | Wear protective gloves. |
|  | Wear non-slip, conductive safety shoes. |
|  | Wear protective clothing. |
|  | Warning! Before installation, cleaning, alterations, maintenance, storage and transport switch off the device and disconnect it from the power supply. |



Complies with the Australian norms and standards.

1. Introduction

Congratulations on choosing to buy a FERREX® product.

All products brought to you by FERREX® are manufactured to the highest standards of performance and safety, and as part of our philosophy of customer service and satisfaction, are backed by our comprehensive 5 Years Warranty.

We hope you will enjoy using your purchase for many years to come.

Note:

According to the applicable product liability law the manufacturer of this device is not liable for damages which arise on or in connection with this device in case of:

- improper handling,
- non-compliance with the instructions for use,
- repairs by third party, non-authorized skilled workers,
- installation and replacement of non-original spare parts,
- improper use,
- failures of the electrical system due to the non-compliance with the electrical specifications and regulations.

Recommendations:

Read the entire text of the operating instructions prior to the assembly and operation of the device.

These operating instructions are intended to make it easier for you to get familiar with your device and utilise its intended possibilities of use.

The operating instructions contain important notes on how to work safely, properly and economically with your machine and how to avoid dangers, save repair costs, reduce downtime, and increase the reliability and working life of the machine.

In addition to the safety regulations contained herein, you must in any case comply with the applicable regulations of your country with respect to the operation of the machine.

Put the operating instructions in a clear plastic folder to protect them from dirt and humidity, and store them near the machine. The instructions must be read and carefully observed by each operator prior to starting the work. Only persons who have been trained in the use of the machine and have been informed on the related dangers and risks are allowed to use the machine. The required minimum age must be met.

In addition to the safety notes contained in the present operating instructions and the special regulations of your country, the generally recognised technical rules for the operation of identically constructed machines must be observed.

2. Layout (Fig. A)

1. Return hose
2. Suction hose
3. Pressure regulator
4. Storage compartment for nozzles and filters
5. Nozzle
6. Safety catch
7. Paint spray gun
8. Handle
9. Trigger
10. Connecting thread
11. HEA filter
12. High-pressure hose
13. Function switch (SPRAY/PRIME)
14. Connecting thread
15. Intake filter
16. Valve trigger
17. Filter plate
18. Plastic ring
19. Holder
20. Nozzle chamber
21. Nozzle holder
22. Spring
23. Washer
24. Ball
25. O-ring
26. Inlet valve
27. Fastening screw
28. Hex screw
29. Hose clips

3. Scope of delivery

- 1x Paint Spray Station (Main Unit)
- 1x High Pressure Pipe
- 1x Gun Body
- 1x Filter Element (1 x pre-assembled)
- 2x Nozzle (311/517)
- 2x Screw (3,5/9,5 mm)
- 1x Instruction Manual
- 1x Warranty Card

4. Intended use

This appliance is designed for painting indoor walls as well as outdoor objects. Permissible materials for use include:

- water-based paints and varnishes.

Do not use for:

- Flammable coatings, materials containing acetone or nitro thinners,
- Materials that contain highly abrasive components,
- Facade paint, lyes and acidic coating materials.

Do not use the appliance in areas where there is a risk of explosion. Any other usage or modification of the appliance is deemed to be improper and carries a significant risk of accidents. The manufacturer accepts no responsibility for damage(s) resulting from improper usage. This appliance is intended for domestic use only.

5. General safety warnings

⚠ WARNING: Read all safety warnings, instructions, illustrations and specifications provided with this power tool. Failure to follow all instructions listed below may result in electric shock, fire and/or serious injury.

Save all warnings and instructions for future reference.

The term “power tool” in the warnings refers to your mains-operated (corded) power tool or batteryoperated (cordless) power tool.

1. Work area safety

- a) **Keep your work area clean and well-lit.** Cluttered or dark areas invite accidents.
- b) **Do not operate power tools in explosive atmospheres, such as in the presence of flammable liquids, gases or dust.** Power tools create sparks which may ignite the dust or fumes.
- c) **Keep children and bystanders away while operating a power tool.** Distractions can cause you to lose control.

2. Electrical safety

- a) **Power tool plugs must match the outlet. Never modify the plug in any way. Do not use any adapter plugs with earthed (grounded) power tools.** Unmodified plugs and matching outlets will reduce risk of electric shock.
- b) **Avoid body contact with earthed or grounded surfaces, such as pipes, radiators, ranges and refrigerators.** There is an increased risk of electric shock if your body is earthed or grounded.
- c) **Do not expose power tools to rain or wet conditions.** Water entering a power tool will increase the risk of electric shock.
- d) **Do not abuse the cord. Never use the cord for carrying, pulling or unplugging the power tool. Keep cord away from heat, oil, sharp edges or moving parts.** Damaged or entangled cords increase the risk of electric shock.
- e) **When operating a power tool outdoors, use an extension cord suitable for outdoor use.** Use of a cord suitable for outdoor use reduces the risk of electric shock.
- f) **If operating a power tool in a damp location is unavoidable, use a residual current device (RCD) protected supply.** Use of an RCD reduces the risk of electric shock.

3. Personal safety

- a) **Stay alert, watch what you are doing and use common sense when operating a power tool. Do not use a power tool while you are tired or under the influence of drugs, alcohol or medication.** A moment of inattention while operating power tools may result in serious personal injury.

- b) Wear personal protective equipment and always safety goggles.** Protective equipment such as a dust mask, non-skid safety shoes, hard hat or hearing protection used for appropriate conditions will reduce personal injuries.
- c) Prevent unintentional starting. Ensure the switch is in the off-position before connecting to power source and/or rechargeable battery, picking up or carrying the tool.** Carrying power tools with your finger on the switch or energising power tools that have the switch on invites accidents.
- d) Remove any adjusting key or screwdriver before turning the power tool on.** A wrench or a key left attached to a rotating part of the power tool may result in personal injury.
- e) Do not overreach. Keep proper footing and balance at all times.** This enables better control of the power tool in unexpected situations.
- f) Dress properly. Do not wear loose clothing or jewellery. Keep your hair and clothing away from moving parts.** Loose clothes, jewellery or long hair can be caught in moving parts.
- g) If devices are provided for the connection of dust extraction and collection facilities, ensure these are connected and properly used.** Use of dust collection can reduce dust-related hazards.
- h) Do not let familiarity gained from frequent use of tools allow you to become complacent and ignore tool safety principles.** A careless action can cause severe injury within a fraction of a second.

4. Power tool use and care

- a) Do not force the power tool. Use the correct power tool for your application.** The correct power tool will do the job better and safer at the rate for which it was designed.
 - b) Do not use the power tool if the switch does not turn it on and off.** Any power tool that cannot be controlled with the switch is dangerous and must be repaired.
 - c) Disconnect the plug from the power source and/or remove the battery pack, if detachable, from the power tool before making any adjustments, changing accessories, or storing power tools.** Such precautionary measures reduce the risk of starting the power tool accidentally.
-

- d) Store idle power tools out of the reach of children and do not allow persons unfamiliar with the power tool or these instructions to operate the power tool.** Power tools are dangerous in the hands of untrained users.
- e) Maintain power tools and accessories. Check for misalignment or binding of moving parts, breakage of parts and any other condition that may affect the power tool's operation. If damaged, have the power tool repaired before use.** Many accidents are caused by poorly maintained power tools.
- f) Keep cutting tools sharp and clean.** Properly maintained cutting tools with sharp cutting edges are less likely to bind and are easier to control.
- g) Use electric tools, insertion tools, etc. according to these instructions, taking into account the working conditions and the work to be performed.** Use of the power tool for operations different from those intended could result in a hazardous situation.
- h) Keep handles and grasping surfaces dry, clean and free from oil and grease.** Slippery handles and grasping surfaces do not allow for safe handling and control of the tool in unexpected situations.

5. Service

- a) Only have your electric tool repaired by qualified specialists and only with original spare parts.** . This will ensure that the safety of the power tool is maintained.

Additional safety instructions

- **RISK OF EXPLOSION AND FIRE!** Make sure there are no ignition sources in the vicinity. There is a risk of explosion due to the potential formation of an explosive atmosphere in combination with ignition sources (e.g. by electrostatic discharge, electric sparks, hot surfaces)!
- **RISK OF INJURY! DUE TO MISUSE!** Do not point the appliance towards people or animals.
- **RISK OF EXPLOSION/FIRE! SMOKING PROHIBITED!** Do not cause any sparks or ignite a naked flame. Make sure there are no ignition sources in the vicinity, such as open fires, smoking cigarettes, cigars and tobacco pipes, sparks, glowing wires, hot surfaces, etc.
- **WARNING!** Keep your distance from the nozzle tip!

- Do not spray yourself, other people or animals. Keep your hands and other body parts out of the spray jet. If the spray jet pierces your skin, seek medical assistance immediately. The sprayed material can even penetrate through a glove and into the skin and thus into your body.
- Do not treat an injection wound as a simple cut. A high-pressure jet can inject toxins into the body and cause serious injuries (e.g. necrosis, loss of limbs). In the event of a chemical penetration of the skin, seek medical assistance immediately.
- Before each use, the following points must be observed in accordance with the operating instructions:
 1. Do not use an appliance if it is faulty.
 2. Secure the hand spray gun against accidental activation using the safety catch on the trigger.
 3. Ensure earthing – The connection must be made via a properly earthed safety socket (Schuko).
 4. Check the maximum permissible operating pressure of the high-pressure hose and spray gun.
 5. Check all connections for leaks.
- Strictly follow the instructions on regular cleaning and maintenance of the appliance. Observe the following rules before carrying out any work on the appliance and at every work break:
 1. Depressurise the spray gun and the high-pressure hose.
 2. Secure the hand spray gun against accidental activation using the safety catch on the trigger.
 3. Switch off the appliance.
- Do not use the appliance in areas that fall under the explosion protection ordinance.
- Keep your work area clean, well lit and free of paint and solvent containers, cloths and other inflammable materials. Possible risk of spontaneous combustion. Make sure you have functional fire extinguishers available at all times.
- Do not spray or clean with materials whose ignition point is lower than 21°C. Use waterbased materials, non-volatile hydrocarbons or similar materials. The evaporation of volatile solvents will cause an explosive environment.

- Do not spray near ignition sources such as static electric sparks, open flames, ignition flames, hot items, motors, cigarettes or sparks caused by plugging in/unplugging power cables or by operating switches. These kinds of ignition sources could ignite a fire in the environment.
- Do not spray any material if you do not know whether it is potentially dangerous. Unknown materials can cause hazards.
- To avoid potential risks, damaged mains cables should be replaced by the manufacturer, their customer service department or someone similarly qualified.
- Wear additional personal protective equipment such as suitable gloves and a protective mask/respirator when spraying or when handling chemicals. Wearing appropriate protective equipment for the conditions reduces your exposure to dangerous substances.
- Be aware of the potential hazards of the sprayed material. Follow the markings on the container and the manufacturer's information on the spray material you are using, including the instructions to use personal protective equipment. Follow the manufacturer's instructions to reduce the risk of fire and injuries caused by poisons, carcinogens, etc.
- The spray gun must not be used for spraying flammable substances. Do not clean spray guns with flammable solvents.
- Secure the appliance and the spray gun.
- Secure all hoses, connections and filter parts before starting up the spray pump. Unsecured parts can come loose with great force or fluid can escape at high pressure, causing serious injury. Always secure the spray gun when assembling or disassembling the nozzle and during any breaks in work.
- Be prepared for recoil from the spray gun during operation. At high operating pressure, pulling the trigger causes a recoil force of up to 15 N. If you are not prepared for this, your hand may be pushed back or you may lose your balance. This can lead to injuries. Continuous exposure to this recoil can lead to permanent damage to health.
- Max. operating pressure: the permissible operating pressure for the spray gun, high-pressure hose and spray gun accessories must not be less than the maximum operating pressure of 110 bar (11 MPa) indicated on the appliance.

- The appliance must be connected via a properly earthed safety socket (Schuko). The connection must be equipped with a residual current device $INF \leq 30 \text{ mA}$.
- Make sure that the mains supply being connected corresponds to the values indicated on the type plate.
- Before carrying out any work on the appliance, relieve the pressure and disconnect the mains plug from the socket.
- You must earth the object that you are intending to spray!
- Observe the user manual when installing, maintaining and repairing the appliance.
- The appliance must be earthed during installation.
- Ensure adequate ventilation in the spray area and sufficient fresh air in the entire room. Wear a mask!
- Always wear suitable safety goggles to keep hazardous vapours and liquids away from your eyes.
- Wear protective clothing to keep paint away from your skin and hair.
- **WARNING!** Under certain circumstances, the flow rate of the coating material may cause electrostatic charges to occur on the appliance during spraying. They can cause sparks or flames when discharged. Therefore, make sure that the appliance is always earthed via the electrical installation. The connection must be made via a properly earthed safety socket (Schuko).
- Pay attention to the hazards that may be caused by the sprayed substance and also observe the labels on the containers or the instructions given by the manufacturer of the substance.
- When working indoors: Ensure that no vapours containing solvents form in the area around the appliance. Place the appliance on the side facing away from the spray object. Keep a minimum distance of 5 m between the motor unit and the spray gun
- **WARNING!** When working outdoors: Do not allow vapours containing solvents to drift towards the appliance. Pay attention to the wind direction! Position the appliance so that no vapours containing solvents can reach and build up around the appliance. Keep a minimum distance of 5 m between the appliance and the spray gun.
- There is a risk of a short-circuit if water penetrates the appliance! Never clean the appliance with a high-pressure or steam cleaner.

- Do not use a solvent container with a small opening to clean the appliance. An explosive atmosphere could form. Earth the container beforehand.

Safety instructions for the high-pressure hose

- Caution: Risk of injury from injection! Leaks can develop in the high-pressure hose due to wear, kinking and improper use. Fluid from the leak can be injected into the skin.
- The electrostatic charge from the spray gun and high-pressure hose is discharged via the high-pressure hose.
- Check the high-pressure hose thoroughly before each use.
- Never pull on the high-pressure hose to move the appliance.
- Never try to repair a defective high-pressure hose yourself!
- Replace a damaged high-pressure hose immediately.
- Avoid sharp bending or kinking; the smallest bending radius is about 20 cm.
- Protect the high-pressure hose from sharp objects and edges.
- Never twist the high-pressure hose.
- Do not immerse the high-pressure hose in solvent. Wipe the outside only with a soaked cloth.
- Route the high-pressure hose so that there is no risk of tripping.
- Do not drive over the high-pressure hose.
- NOTE: The risk of damage increases with old highpressure hoses. We recommend replacing the high-pressure hose every 6 years.

RESIDUAL RISKS

When using the tool, additional residual risks may occur that are not listed in the enclosed safety instructions. These risks can arise from misuse, prolonged use, etc.

Even if you follow the relevant safety regulations and use safety equipment, certain residual risks cannot be avoided. These include:

- Lung damage, if no suitable breathing protection is worn;
- Hearing damage, if hearing protection is not worn;
- Eye damage, if suitable eye protection is not worn;
- Damage to health due to swinging of your hands and arms during prolonged operation of the appliance or if the appliance is not properly held or maintained. If you use an appliance for a long period of time, take regular breaks.

WARNING! HAZARDS CAUSED BY MATERIALS AND SUBSTANCES

- There is a risk of coming into contact with or absorbing coating materials and/or cleaning fluids. There is also a risk of inhaling vapours from liquids. This can cause permanent damage under certain conditions.
- Always wear personal protective equipment when working on the appliance!
- Ensure sufficient technical or natural ventilation.
- Follow the manufacturers' safety instructions for the respective coating materials and cleaning liquids.
- If you experience any symptoms, seek medical advice!

6. Technical data

| | |
|--------------------------------------|--------------|
| Rated voltage | 230 V~ 50 Hz |
| Motor rating W | 550 W |
| Max. paint flow rate | 1250 ml/min |
| Max. working pressure | ca. 110 bar |
| Max. temperature of coating material | 40 °C |
| Protection class | I |
| Protection rating | IPX3 |
| Weight | ca. 7,8 kg |

Subject to technical modifications!

The noise emission values were measured in accordance with EN 14462 .

Wear hearing protection.

The effects of noise can cause a loss of hearing.

Noise data

| | |
|---|----------------|
| sound pressure level L_{pA} | 78,4 dB |
| uncertainty K_{pA} | 2,5 dB |
| sound power level L_{WA} | 91,2 dB |
| uncertainty K_{WA} | 2,5 dB |

⚠ Warning: Noise can have serious effects on your health. If the machine noise exceeds 85 dB, please wear suitable hearing protection.

Wear hearing protection.

The effects of noise can cause a loss of hearing. Keep the noise level and vibration to a minimum!

- Only use faultless devices.
- Maintain and clean the device at regular intervals.
- Adapt your working methods to the device.
- Do not overload the device.
- Have the device checked if necessary.
- Switch the device off if it is not in use.

Vibraion data

| | |
|---|--------------------------------|
| Total vibration value of the handle a_h | <2,5 m/s² |
| uncertainty K | 1,5 m/s² |

- The vibration emission values and the noise emission values given in these instructions have been measured in accordance with a standardised test procedure and can be used for comparison of the power tool with another tool.
- The specified total vibration values and the noise emission values can also be used to make a provisional load estimate.
- Depending on the manner in which the power tool is being used, and in particular the kind of workpiece being worked, the vibration and noise emission values can deviate from the values given in these instructions during actual use of the power tool.

Try to keep the vibration load as low as possible. Measures to reduce the vibration load are, e.g. wearing gloves and limiting the working time. Wherein all states of operation must be included (e.g. times when the power tool is switched off and times where the power tool is switched on but running without load).

7. Unpacking

- Open the packaging and carefully remove the product.
- Remove the packaging material, as well as the packaging and transport safety devices (if present).
- Check whether the scope of delivery is complete.
- Check the product and accessory parts for transport damage. In the event of complaints the carrier must be informed immediately. Later claims will not be recognised.
- If possible, keep the packaging until the expiry of the warranty period.
- Familiarise yourself with the product by means of the operating manual before using for the first time.
- With accessories as well as wearing parts and replacement parts use only original parts. Spare parts can be obtained from your specialist dealer.
- When ordering please provide our article number as well as type and year of manufacture for the product.

⚠ WARNING!

The product and the packaging material are not children's toys! Do not let children play with plastic bags, films or small parts! There is a danger of choking or suffocating!

8. Working procedures

Material and paint selection

⚠ ATTENTION! Do not use textured wall paints or coatings as this will block the spray gun tip and damage internal components of the airless spray station.

Material and paints which can be used

Although a large number of materials and paints can be sprayed, some cannot. Please check with the manufacturers' recommendations.

The following materials and paints can be used:

- Water based paints
- Wood preservatives
- Oil based paints
- Primers
- Enamel paint
- Wash primer
- Varnish
- Oil
- Stains

Materials and paints which cannot be used

The use of the following materials and paints will cause premature wear and block the spray tip. This will void warranty.

- Paints and lacquers containing heavily abrasive components such as
 - Exterior textured wall paints
 - Dispersion paints
 - Glazes
 - Caustic and alkaline substances
 - Lyes
 - Textured coating
 - Acids
 - Emulsion paints
- Silicate paints
- Flammable materials

NOTE:

- Ensure that the spray material and thinning agent are compatible. Using an unsuitable thinning agent may cause clots that clog the appliance.
- To find out which thinning agent is suitable for your spray material (water, paint thinner), refer to the manufacturer's notes provided with the spray material.
- Granular products and products containing solids must not be sprayed. Their abrasive effect will shorten the service life of the appliance.

Preparing the spray surface

- **WARNING!** Risk of electric shock due to penetrating spray material! Be sure to mask any sockets and switches.

- Cover any surfaces around the spray area extensively and thoroughly. Any surface that is not masked could become contaminated.
- Make sure that the spray surface is clean, dry and free of grease.
- Polished surfaces should be lightly sanded and the sanding dust removed.

Spraying technique

- Always hold the paint spray gun at the same distance and at a right angle to the object. The ideal spraying distance is approx. 20–25 cm. Move the paint spray gun evenly with your whole arm.
- Determine the appropriate settings in each case by experimenting, e.g. on a piece of cardboard.
- Do not switch the appliance on/off above the spray area, but start and stop the spraying process approx. 10 cm outside the spray area.

9. Before use

Assembly

You can assemble the appliance using two adjustable spanners (not supplied). Alternatively, you can also use a 16 mm and 19 mm wrench (not supplied).

High-Pressure hose connection (Fig. A, B)

1. Fit the high-pressure hose (12) into the connecting thread (14) on the appliance. Tighten the nut using an adjustable spanner. Counter the nut of the connection thread with a second adjustable spanner.
2. Fit the other end of the high-pressure hose to the connecting thread (14) of the paint spray gun. Tighten the nut using an adjustable spanner. Counter the nut of the connection thread of the paint spray gun with a second adjustable spanner.

Suction Hose and Return hose connection

The suction hose and return hose are pre-assembled on the machine.

1. If the suction hose or return hose needs to be changed, use a flat head screwdriver (not included) to loosen the screw on the hose clamp suction hose mesh filter, hose clamp suction hose inlet port, hose clamp return hose inlet port and remove the hose.
 2. Replace by a new hose (suction hose / return hose) and mount it in the opposite direction.
-

Selecting/changing the nozzle (Fig. G)

Nozzle 311: low viscosity spray material

Nozzle 517: viscous spray material

Insert the corresponding nozzle (5) with the arrow tip in the spraying direction into the nozzle chamber (20).

Replacing HEA filter (Fig. C)

WARNING! The system must be depressurised in order to carry out the following work. To do this, follow the instructions in the section „Depressurising the appliance“.

1. Remove the high-pressure hose (12) from the paint spray gun (7).
2. Turn the handle (8) clockwise until the upper end can be detached from the paint spray gun (7). You can attach an adjustable spanner to the lower end of the handle to help.
3. Insert the appropriate filter (11) for the installed nozzle (5).
4. Turn the handle (8) anticlockwise back into the thread of the paint spray gun (7).

NOTE Clean the filters (11) regularly and replace them, if necessary. You can obtain replacement filters from the service hotline given in the section „Service“.

10. Use

1. Place the suction hose (2) and return hose (1) in the paint bucket.
2. Press the valve trigger (16) to ensure that the valve is free of any blockages (see Fig. D).
3. Insert the plug into a mains power socket.
4. Turn the function switch (13) to the horizontal position (PRIME).
5. Turn the pressure regulator (3) to position 2 to ensure that the paint is pumped through the system.
6. Wait until the paint runs through the return hose (1) back into the paint bucket. Turn the pressure regulator (3) to position 0 (off).
NOTE If no paint comes out, follow the measures described in the section „Eliminating suction problems“.
7. Turn the function switch (13) to the vertical position (SPRAY).
8. Turn the pressure regulator (3) to a level corresponding to the viscosity of the sprayed material.
9. Hold the paint spray gun (7) over an empty container.

10. Unlock the paint spray gun (7) by turning the safety catch (6) so that its tip is facing down
11. Pull the trigger (9) until the paint comes out in a straight stream.
12. Lock the paint spray gun (7) by turning the safety catch (6) with the tip as far back and up as possible.

Settings

- You can use the pressure regulator (3) to switch the appliance on by setting a level greater than 0. The level you choose depends on the spray material used. Determine the best setting by carrying out a spray test.
- The function switch (13) has two settings:
 - 1. PRIME (horizontal position): This setting allows you to pre-fill the system with paint or to depressurise the appliance.
 - 2. SPRAY (vertical position): You can use this setting to work with the appliance.

Spraying

1. Unlock the paint spray gun (7) by turning the safety catch (6) so that its tip is facing down.
 2. To spray, press the trigger and hold it down.
 3. To stop spraying, release the trigger (9) again.
- WARNING!** Always secure the paint spray gun (7) while you are not actually spraying.
4. Lock the paint spray gun (7) by turning the safety catch (6) with the tip as far back and up as possible.

Overheating protection

The appliance has an overheating protection. It switches the appliance off if overheating is imminent. If this happens, carry out the following steps:

1. Turn the pressure regulator (3) to position 0 (off).
2. Turn the function switch (13) to the horizontal position (PRIME).
3. Let the appliance cool down for at least 30 minutes and, if necessary, remove the cause of the overheating. This could be, for example, an item that is covering the ventilation slots or if the appliance is too close to a wall.
4. Put the appliance back into operation.

Depressurising the appliance

Always depressurise the appliance when you want to take it out of operation. Depressurise the system as follows:

1. Turn the pressure regulator (3) to position 0 (off).
2. Turn the function switch (13) to the horizontal position (PRIME).
3. Unlock the paint spray gun (7) by turning the safety catch (6) so that its tip is facing down.
4. Release the pressure by pulling the trigger (9). Hold the paint spray gun (7) over an empty container while doing so.
5. Wait until all pressure and paint has been dispelled from the system. To stop spraying, release the trigger (9) again.
6. Lock the paint spray gun (7) by turning the safety catch (6) with the tip as far back and up as possible.

Eliminating suction problems

1. Press the valve trigger (16) 3–4 times to remove any blockages or deposits from the valve.
2. If the problem persists: tap the connecting thread several times extremely carefully with a rubber mallet to loosen harder deposits.

Blow out the nozzle (Fig. E)

⚠ **WARNING!** Always secure the paint spray gun (7) while you are not actually spraying.

1. Turn the inserted nozzle (5) 180 degrees towards the rear. If the nozzle cannot be turned, try depressurising the appliance.
2. Press the trigger (9) to blow out the nozzle (5). Hold the paint spray gun (7) over an empty container while doing so. As soon as a straight spray jet comes out, the nozzle (5) is blown out.
3. Turn the inserted nozzle (5) 180 degrees towards the front.

NOTE Use an appropriate HEA filter (11) to minimise blockages.

Work breaks

1. Depressurise the appliance.
2. Turn the pressure regulator (3) to position 0 (off).
3. Remove the plug from the mains socket.
4. Place the paint spray gun (7) in a plastic bag, which you then seal airtight.
5. Wet the paint in the paint bucket with water so that no skin forms on the top

11. Cleaning and care

⚠ WARNING! RISK OF INJURY! Before carrying out any work on the appliance, switch it off, disconnect the mains plug and depressurise the appliance!

⚠ ATTENTION!

- Do not use flammable materials such as nitro thinners for cleaning.
- Please refer to the manufacturer's information of the respective spray material to find out which cleaning agents are suitable.

NOTE

- Thorough cleaning directly after every use is very important for safety and operation. Otherwise, the proper functioning of the appliance can no longer be guaranteed.
- Wear suitable protective gloves during cleaning work.
- Remove coating material residues at appropriate intervals. Remove any sprayed material that has got onto unwanted surfaces before it dries.

1. Depressurise the appliance.
2. Lock the paint spray gun (7) by turning the safety catch (6) with the tip as far back and up as possible.
3. Unscrew the nozzle holder (21) from the paint spray gun (7).
4. Place the suction hose (2) together with the return hose (1) in a container with water or a suitable cleaning agent.
5. Turn the function switch (13) to the vertical position (SPRAY).
6. Turn the pressure regulator (3) to position 5.
7. Unlock the paint spray gun (7) by turning the safety catch (6) so that its tip is facing down.
8. Drain off the remaining paint by pulling the trigger (9). Hold the paint spray gun (7) over a paint bucket while doing so.

ATTENTION! If you are using a metal container, earth the paint spray gun (7) beforehand.

9. Release the trigger (9) as soon as the cleaning fluid starts flowing out.
10. Lock the paint spray gun (7) by turning the safety catch (6) with the tip as far back and up as possible.
11. Turn the function switch (13) to the horizontal position (PRIME).

12. Unlock the paint spray gun (7) by turning the safety catch (6) so that its tip is facing down.
13. Drain off the remaining paint by pulling the trigger (9). Hold the paint spray gun (7) over the detergent container while doing so.
14. Release the trigger (9) as soon as clear cleaning fluid starts flowing out.
15. Lock the paint spray gun (7) by turning the safety catch (6) with the tip as far back and up as possible.
16. Turn the pressure regulator (3) to position 0 (off). Remove the plug from the mains socket.
17. Depressurise the appliance.
18. Remove the high-pressure hose w from the paint spray gun with the aid of an adjustable spanner.
19. Disassemble the nozzle holder (21) a along with the nozzle (5), holder (19) and plastic ring (18) (see Fig. G). Clean all parts thoroughly using suitable cleaning agents.
20. Lock the paint spray (7) gun by turning the safety catch (6) with the tip as far back and up as possible.

NOTE Clean the HEA filters (11) regularly. Replace them if cleaning is no longer sufficient.

21. Disconnect the suction hose (2) and the return hose (1) from the appliance using the hose clips (29). Clean the outsides of the hoses.
22. Remove the filter plate (17) of the intake filter (15) (see Fig. F).
23. Clean the filter plate (17) thoroughly under running water.
24. Remove the high-pressure hose (12) from the connecting thread (14) using an adjustable spanner. Counter the connection thread (14) using a second adjustable spanner.
25. Dip the inlet valve (26) into a container filled with conservation agent (e.g. fine mechanical oil) so that the fluid can be sucked up.
26. Insert the plug into a mains power socket.
27. Hold a cloth in front of the connecting thread (14). Turn the pressure regulator (3) to position 1 for about 5 seconds. This helps to preserve the appliance. Turn the pressure regulator (3) to position 0 (off).
28. Remove the plug from the mains socket.

Cleaning the inlet valve (Fig. H)

NOTE If there are irremediable problems with the paint suction, you should clean the inlet valve (26) or replace it, if necessary.

1. Disconnect the suction hose (2) from the appliance.

2. Remove the inlet valve (26) using an adjustable spanner.
3. Remove the O-ring (25), ball (24), washer (23) and spring (22).
4. Clean the parts thoroughly using suitable cleaning agents. Replace them, if necessary.
5. Grease the O-ring (25).
6. Replace the parts into the inlet valve (26).
7. Screw the inlet valve (26) back into the appliance. Tighten it using an adjustable spanner.

Cleaning the connecting thread

If you are still experiencing a poor spray pattern after cleaning the nozzle, you should clean the connecting thread (14).

1. Remove the high-pressure hose (12) from the connecting thread (14) using an adjustable spanner. Counter the nut of the connection thread (14) with a second adjustable spanner.
2. Loosen the fastening screw (27) with a Phillips screwdriver (not supplied).
3. Loosen the hex screw (28) with a 2 mm hex key (not supplied).
4. Remove the connection thread (14) using an adjustable spanner.
5. Clean the connecting thread (14) using a suitable cleaning agent. Replace it, if necessary.
6. Screw the connecting thread (14) back into the appliance and tighten it using an adjustable spanner.
7. Retighten the fastening screw (27) with a Phillips screwdriver.
8. Turn the hex screw (28) with a 2 mm hex key.

Storage and transportation

- Store the appliance in a dry, dust-free location.
- Transport the appliance only when you have taken it completely out of service. Transport the appliance in such a way that it cannot be damaged or soiled. Preferably, use the original packaging.

12. Electrical connection

The electrical motor installed is connected and ready for operation. The connection complies with the applicable VDE and DIN provisions.

The customer's mains connection as well as the extension cable used must also comply with these regulations.

When working with spray attachments and during temporary use outdoors, the device must be connected to a residual current circuit breaker with a trigger current of 30 mA or less.

Damaged electrical connection cable

The insulation on electrical connection cables is often damaged.

This may have the following causes:

- Passage points, where connection cables are passed through windows or doors.
- Kinks where the connection cable has been improperly fastened or routed.
- Places where the connection cables have been cut due to being driven over.
- Insulation damage due to being ripped out of the wall outlet.
- Cracks due to the insulation ageing.

Such damaged electrical connection cables must not be used and are life-threatening due to the insulation damage.

Check the electrical connection cables for damage regularly. Make sure that the connection cable does not hang on the power network during the inspection.

Electrical connection cables must comply with the applicable VDE and DIN provisions. Only use connection cables with the marking „H05VV-F“.

The printing of the type designation on the connection cable is mandatory.

AC motor

- The mains voltage must be 220 - 240 V~
- Extension cables up to 25 m long must have a cross-section of 1.5 mm².

Connection type Y

If the mains connection cable of this device is damaged, it must be replaced by the manufacturer, their service department or a similarly qualified person to avoid dangers.

Connections and repairs of electrical equipment may only be carried out by an electrician.

Please provide the following information in the event of any enquiries:

- Type of current for the motor
- Machine data - type plate
- Motor data - type plate

13. Disposal and recycling

Notes for packaging



The packaging materials are recyclable. Please dispose of packaging in an environmentally friendly manner. Do not throw old equipment away with household waste!

Notes on the electrical and electronic equipment act [ElektroG]



Waste electrical and electronic equipment does not belong in household waste, but must be collected and disposed of separately!

- Used batteries or rechargeable batteries that are not installed permanently in the old appliance must be removed non-destructively before disposal. Their disposal is regulated by the battery law.
- Owners or users of electrical and electronic devices are legally obliged to return them after use.
- The end user is responsible for deleting their personal data from the old device being disposed of!
- The symbol of the crossed-out dustbin means that waste electrical and electronic equipment must not be disposed of with household waste.
- Waste electrical and electronic equipment can be handed in free of charge at the following places:
 - Public disposal or collection points (e.g. municipal works yards)
 - Points of sale of electrical appliances (stationary and online), provided that dealers are obliged to take them back or offer to do so voluntarily.
 - Up to three waste electrical devices per type of device, with an edge length of no more than 25 centimetres, can be returned free of charge to the manufacturer without prior purchase of a new device from the manufacturer or taken to another authorised collection point in your vicinity.
 - Further supplementary take-back conditions of the manufacturers and distributors can be obtained from the respective customer service.
- If the manufacturer delivers a new electrical appliance to a private household, the manufacturer can arrange for the free collection of the old electrical appliance upon request from the end user. Please contact the manufacturer's customer service for this.

- These statements only apply to devices installed and sold in the countries of the European Union and which are subject to the European Directive 2012/19/EU. In countries outside the European Union, different regulations may apply to the disposal of waste electrical and electronic equipment.

14. Troubleshooting

| Problem | Possible Cause | Action |
|-------------------------------|--|--|
| The sprayer does not turn on. | The mains power lead is not plugged in. | Plug the mains power lead into a mains power outlet. |
| | No power is coming from the mains power outlet. | Properly test the power supply voltage. |
| | The extension cord is damaged or has too low capacity. | Replace the extension cord with a suitable voltage. |
| | The sprayer shuts off while under pressure. | Motor will cycle On and Off while spraying to regulate pressure. This is normal. |
| Little or no material flow. | Spray tip is clogged. | Clean spray tip using cleaning pin. |
| | Suction hose is clogged. | Clean suction hose. |
| | Pressure control dial turned too low. | Increase pressure dial control dial setting by turning the dial clockwise. |
| | Suction hose is too loose. | Re-adjust the suction hose to the suction hose inlet port and use a flathead screwdriver to tighten the screw on the metal hose clamp suction hose inlet port. |
| | Suction hose mesh filter clogged. | Clean or replace. Use the appropriate cleaning solution depending on the material used. |
| The spray tip leaks. | The nozzle guard nut is loose. | Tighten the nozzle guard nut. |
| | Spray tip was assembled incorrectly. | Remove and assemble correctly. |
| | Spray tip is worn. | Replace the spray tip. |

| | | |
|--|--|---|
| Material leaking | Nozzle guard is loose. | Tighten the nozzle guard. |
| | Spray tip is worn. | Replace the spray tip. |
| | Seal inside the nozzle guard is worn. | Replace the sealing. |
| | Material building up spray tip and nozzle guard. | Clean spray tip and nozzle guard by using the appropriate cleaning solution depending on the material used. |
| Atomization is too coarse. | Material volume too large. | Decrease pressure control dial setting. |
| | Spray Tip and Nozzle Guard clogged. | Clean. |
| | Suction hose mesh filter clogged. | Clean or replace. |
| Pattern runs or sags. | Applying too much material | Adjust pressure control dial or increase movement of spray gun. |
| Too much over-spray. | Gun too far from spray object. | Reduce distance. |
| | Too much material applied. | Decrease Pressure control dial setting. |
| Pattern is very light and blotchy. | Moving the spray gun too fast. | Adjust pressure control dial or decrease movement of spray gun. |
| Spluttering paint. | Air bubbles in the return hose. | Perform "priming the pump" steps. |
| Suction Hose (11) not sucking up water when cleaning the unit. | Lack of pressure. | Using the appropriate cleaning solution in place of material, perform the "priming the pump" steps. |

| | | |
|-------------------------------|--|---|
| The paint pattern is tailing. | The pressure control dial is set too low. | Increase the pressure control dial to a higher setting. |
| | Mesh filter handle, the spray tip, or the suction hose mesh filter is clogged. | Clean mesh filter handle, the spray tip, and the suction hose mesh filter. |
| | The suction hose is loose at the suction hose inlet port. | Re-adjust the suction hose to the suction hose inlet port and use a flat head screwdriver to tighten the screw on the metal hose clamp suction hose inlet port. |
| | The spray tip is worn. | Replace the spray tip. |
| | The paint is too thick. | Thin the paint according to the manufacturer's instructions. |



ALDI

FERREX®

PAINT SPRAY STATION

Warranty Details

REGISTER YOUR PURCHASE AT www.aldi.com.au/en/about-aldi/product-registration/ TO KEEP UP-TO-DATE WITH IMPORTANT PRODUCT INFORMATION

The product is guaranteed to be free from defects in workmanship and parts for a period of 60 months from the date of purchase. Defects that occur within this warranty period, under normal use and care, will be repaired, replaced or refunded at our discretion. The benefits conferred by this warranty are in addition to all rights and remedies in respect of the product that the consumer has under the Competition and Consumer Act 2010 and similar state and territory laws.

Our goods come with guarantees that cannot be excluded under the Australian Consumer Law. You are entitled to a replacement or refund for a major failure and for compensation for any other reasonably foreseeable loss or damage. You are also entitled to have the goods repaired or replaced if the goods fail to be of acceptable quality and the failure does not amount to a major failure.



AFTER SALES SUPPORT

 support@scheppach.com.au

MODEL:F-APS3000 / PRODUCT CODE: 828141 10/2023

 **1300 855 831**



Repair and Refurbished Goods or Parts Notice

Unfortunately, from time to time, faulty products are manufactured which need to be returned to the Supplier for repair.

Please be aware that if your product is capable of retaining user-generated data (such as files stored on a computer hard drive, telephone numbers stored on a mobile telephone, songs stored on a portable media player, games saved on a games console or files stored on a USB memory stick) during the process of repair, some or all of your stored data may be lost.

We recommend you save this data elsewhere prior to sending the product for repair.

You should also be aware that rather than repairing goods, we may replace them with refurbished goods of the same type or use refurbished parts in the repair process.

Please be assured though, refurbished parts or replacements are only used where they meet ALDI's stringent quality specifications.

If at any time you feel your repair is being handled unsatisfactorily, you may escalate your complaint. Please telephone us on "1300 855 831" or write to us at:

RossMac Pty. Ltd.

Unit 6, 4 Ovata Drive, Tullamarine, Victoria, 3043

Telephone: 1300 855 831 (Monday - Friday 8:30am-6:00pm)

Email: support@schepach.com.au





Warranty Certificate

Congratulations! You have made an excellent choice of this quality product. Our commitment to quality also includes our service. Should you, contrary to expectations, experience defects due to manufacturing faults, ALDI will provide you with a warranty against defects as follows:

Warranty

The product is guaranteed to be free from defects in workmanship and parts for a period of 60 month (dependant on product) from the date of purchase. Defects that occur within this warranty period, under normal use and care, will be repaired, replaced or refunded at our discretion. The benefits conferred by this warranty are in addition to all rights and remedies in respect of the product that the consumer has under the Competition and Consumer Act 2010 and similar state and territory laws. Our goods come with guarantees that cannot be excluded under the Australian Consumer Law. You are entitled to a replacement or refund for a major failure and for compensation for any other reasonably foreseeable loss or damage. You are also entitled to have the goods repaired or replaced if the goods fail to be of acceptable quality and the failure does not amount to a major failure.

Proof of Purchase

This warranty is valid for the original purchase and is not transferable. Please keep your purchase docket, tax invoice or receipt as the best proof of purchase, and as proof of date on which the purchase was made.

Extent of Warranty

This warranty is limited to defects in workmanship or parts. All defective products or parts will be repaired or replaced. This warranty does not cover batteries or any other consumable items.

Normal Wear and Tear

This warranty does not cover normal wear and tear to the products or parts.

Exclusions

This warranty does not cover:

- Any defects caused by an accident, misuse, abuse, improper installation or operation, lack of reasonable care, unauthorised modification, loss of parts, tampering or attempted repair by a person not authorised by the distributor.
- Any product that has not been installed, operated or maintained in accordance with the manufacturer's operating instructions provided with the product.
- Any product that has been used for purposes other than domestic use.
- Any damage caused by improper power input or improper cable connection.

To Make a Claim

This warranty against defects is provided by ALDI Stores, Locked Bag 56, St. Marys Delivery Centre, NSW 2760, Phone (02) 9675 9000. If a defect in the goods appears within 60 month (the identified period on the packaging), you are entitled to claim a warranty, please contact or send all warranty claims to:

RossMac Pty. Ltd.
Unit 6, 4 ovata Drive, Tullamarine, Victoria, 3043
Telephone: 1300 855 831
Operating hours: Monday - Friday 08:30am-6:00pm
Email: support@schepach.com.au

When making a return, please ensure the product is properly packaged so as to ensure that no damage occurs to the product during transit.

Please provide the original or a copy of the proof of purchase. Also please make sure you have included an explanation of the problem.

Please note that the costs of making a warranty claim, including any return postage, will be covered by the supplier identified above.

Please note upon receiving your warranty claim, the supplier will send, via the post or email, a repair and refurbished goods or parts notice. Please provide your email address and advise the supplier, if you wish to obtain a repair and refurbished goods or parts notice via email.



AFTER SALES SUPPORT

1300 855 831

support@schepach.com.au

MODEL:F-APS3000 / PRODUCT CODE: 82814110/2023



Warranty Certificate

PRODUCT NAME: PAINT SPRAY STATION

BRAND NAME: FERREX®

PRODUCT NUMBER: 828141

MODEL NUMBER: F-APS3000 OSD 10/2023

NAME

ADDRESS

EMAIL

DAYTIME TEL NO

DATE OF PURCHASE

SERIAL NUMBER

We recommend that you attach a photocopy of your receipt, showing the date of purchase, to this Warranty certificate and keep for your reference. Please do not send to the address below.

In the event of a product fault, please call the Customer Service hotline. Please ensure that you have the product details (as shown on this card) at hand so that we are able to respond as quickly and efficiently as possible.

RosMac Pty. Ltd.

Unit 6, 4 Ovata Drive, Tullamarine, Victoria, 3043, Australia

Telephone: 1300 855 831

Email: support@scheppach.com.au

5

**YEARS
WARRANTY**