

**GARDENLINE®**

***XFINITY LI-ION 20V  
CORDLESS 2 X  
20V LAWN  
MOWER***

**User Guide**

**Original Instructions**



**After Sales Support**

Now you have purchased a Gardenline® product you can rest assured in the knowledge that as well as your 5 years parts and labour guarantee you have the added peace of mind of dedicated helplines.

Version: ed 7; 09/2017



**AFTER SALES SUPPORT**



1300 855 831



support@schepach.com.au

MODEL: 2x 20V Lawn Mower PRODUCT CODE: 57431 10/2017

**5**

YEARS WARRANTY



## GARDENLINE® Cordless 2x 20V Lawn Mower

# Warranty Details

---

REGISTER YOUR PURCHASE AT [www.aldi.com.au/en/about-aldi/product-registration/](http://www.aldi.com.au/en/about-aldi/product-registration/) TO KEEP UP-TO-DATE WITH IMPORTANT PRODUCT INFORMATION

---

The product is guaranteed to be free from defects in workmanship and parts for a period of 60 months (dependant on product) from the date of purchase. Defects that occur within this warranty period, under normal use and care, will be repaired, replaced or refunded at our discretion. The benefits conferred by this warranty are in addition to all rights and remedies in respect of the product that the consumer has under the Competition and Consumer Act 2010 and similar state and territory laws.

Our goods come with guarantees that cannot be excluded under the Australian Consumer Law. You are entitled to a replacement or refund for a major failure and for compensation for any other reasonably foreseeable loss or damage. You are also entitled to have the goods repaired or replaced if the goods fail to be of acceptable quality and the failure does not amount to a major failure.

---

#### AFTER SALES SUPPORT

  1300 855 831

 [support@scheppach.com.au](mailto:support@scheppach.com.au)

AUS Hotline Costs: Local rate for landline calls\*

\*Charges may vary dependent upon network operator or mobile network provider.

MODEL: 2x 20V Lawn Mower PRODUCT CODE: 57431 10/2017





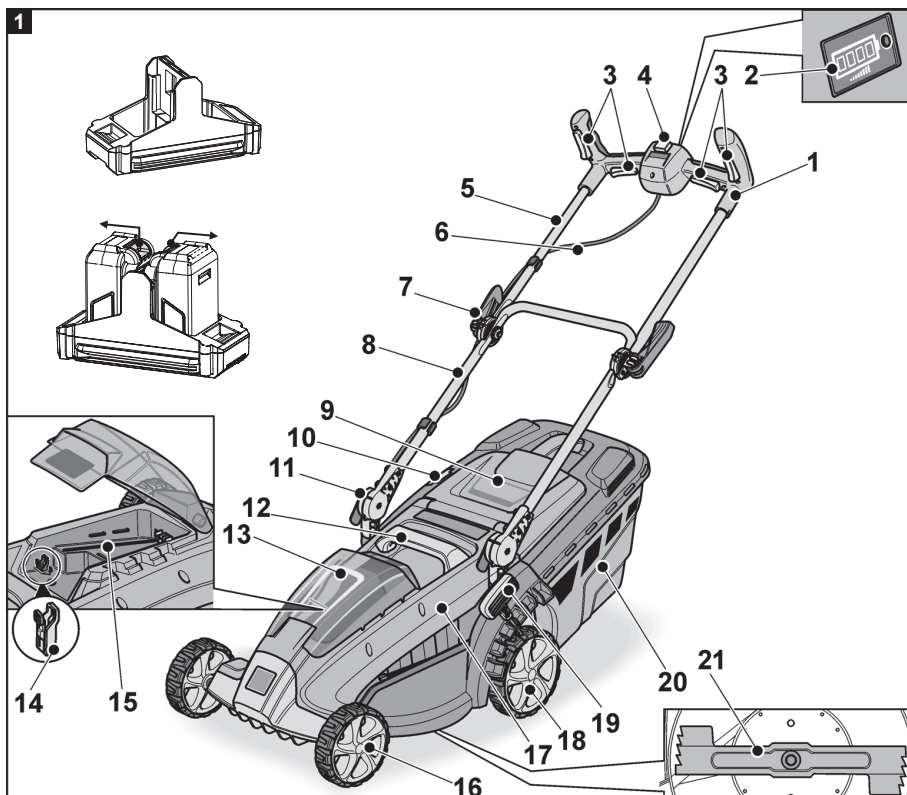
## Contents

Description .....	04
I. Explanation of symbols .....	08
II. Introduction .....	09
III. Scope of delivery .....	10
IV. Intended use .....	10
V. Safety information .....	10
VI. Before initial operation .....	17
VII. Assembling .....	17
VIII. Commissioning .....	19
IX. Troubleshooting .....	20
X. Technical data .....	21
XI. Maintenance and care .....	22
XII. Storage and Transport .....	23
XIII. Disposal and recycling .....	23
XIV. BOM View .....	25
Repair and Refurbished Goods or Parts Notice .....	27

## AFTER SALES SUPPORT



## Description



## Parts List

- |    |                               |    |                            |
|----|-------------------------------|----|----------------------------|
| 1  | Handlebar                     | 13 | Battery cover              |
| 2  | LED state of charge indicator | 14 | Safety key                 |
| 3  | On/Off switch                 | 15 | Insertion slot for battery |
| 4  | Switch interlock              | 16 | Front wheel                |
| 5  | Upper handle                  | 17 | Housing                    |
| 6  | Cable                         | 18 | Rear wheel                 |
| 7  | Quick-clamping levers         | 19 | Cutting height adjustment  |
| 8  | Lower handle                  | 20 | Grass catcher              |
| 9  | Discharge flap                | 21 | Cutter bar                 |
| 10 | Level indicator               |    |                            |
| 11 | Quick-clamping levers         |    |                            |
| 12 | Handle                        |    |                            |

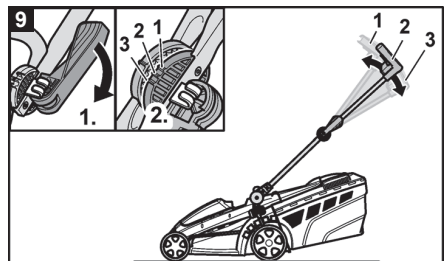
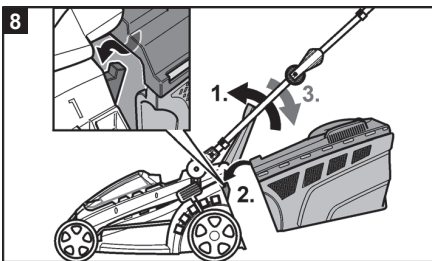
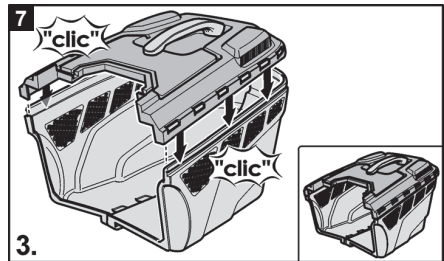
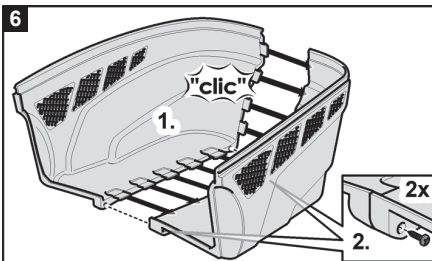
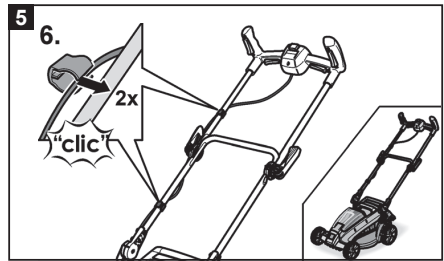
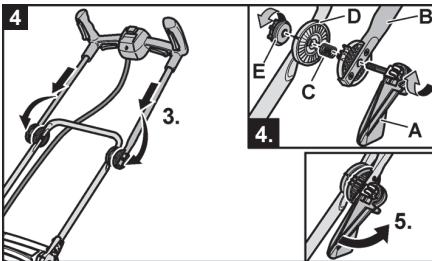
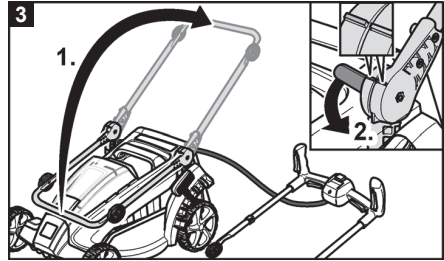
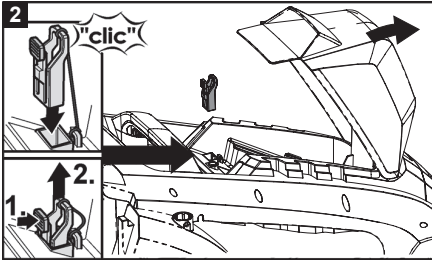
4

## AFTER SALES SUPPORT

support@scheppach.com.au

AUS 1300 855 831

MODEL: 2x 20V Lawn Mower PRODUCT CODE: 57431 10/2017



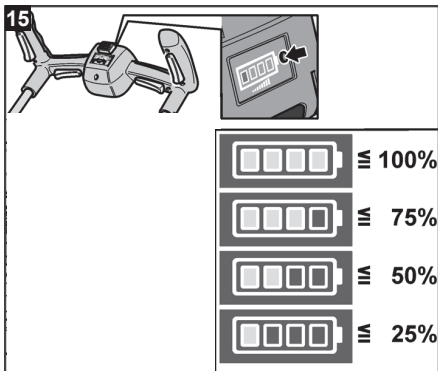
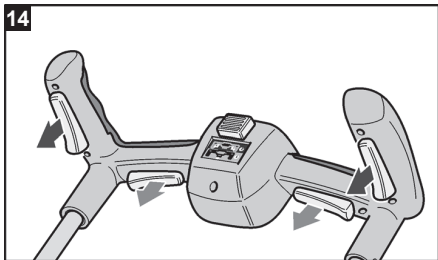
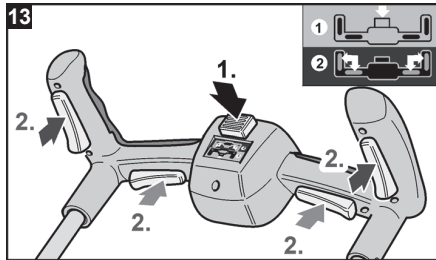
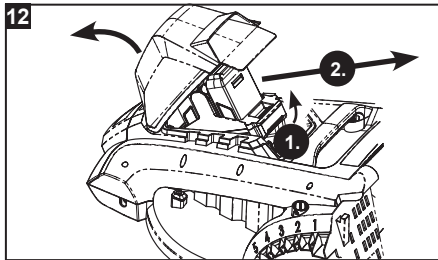
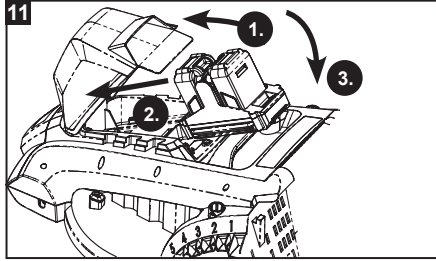
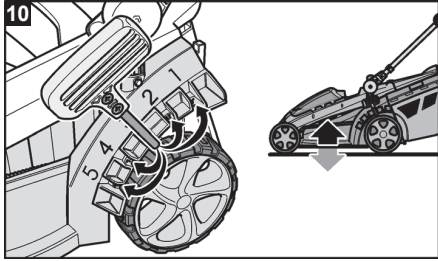
**AFTER SALES SUPPORT**

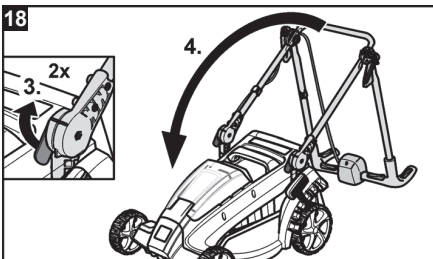
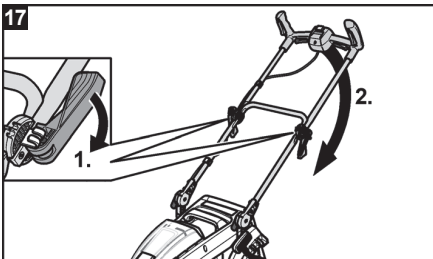
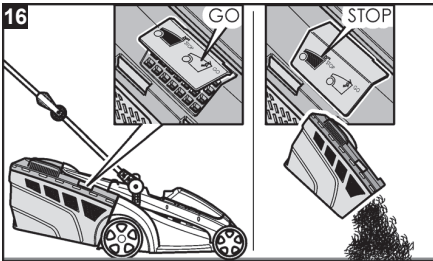


AUS

Description

GARDENLINE





**AFTER SALES SUPPORT**

## I. Explanation of symbols

The use of symbols in this manual is intended to draw your attention to possible risks. The safety symbols and the explanations that accompany them must be perfectly understood. The warnings in themselves do not remove the risks and cannot replace correct actions for preventing accidents.



General safety warning!



Read operating instructions and safety instructions before commissioning!



Wear ear protection!



Remove the safety key before carrying out any work on the unit and before leaving the unit!



Protect the device from rain and do not leave it outdoors in the rain!



Ejected objects and rotating parts can cause serious injuries.



Keep third parties away from the danger area! Always maintain a safe distance from the garden tool when it is working!



CAUTION! Sharp cutting tool! Keep hands and feet away from the cutter bar!  
CAUTION! The device must not be operated without a protective hood (discharge flap) and a grass catcher.





## II. Introduction

Congratulations on choosing to buy a GARDENLINE® product. All products brought to you by GARDENLINE® are manufactured to the highest standards of performance and safety, and as part of our philosophy of customer service and satisfaction, are backed by our comprehensive 5 Year Warranty. We hope you will enjoy using your purchase for many years to come.

### Note:

According to the applicable product liability law the manufacturer of this device is not liable for damages which arise on or in connection with this device in case of:

- improper handling,
- non-compliance with the instructions for use,
- repairs by third party, non-authorized skilled workers,
- installation and replacement of non-original spare parts,
- improper use.

### Recommendations:

Read the entire text of the operating instructions prior to the assembly and operation of the device.

These operating instructions are intended to make it easier for you to get familiar with your device and utilise its intended possibilities of use.

The operating instructions contain important notes on how to work safely, properly and economically with your machine and how to avoid dangers, save repair costs, reduce downtime, and increase the reliability and working life of the machine.

In addition to the safety regulations contained herein, you must in any case comply with the applicable regulations of your country with respect to the operation of the machine.

Put the operating instructions in a clear plastic folder to protect them from dirt and humidity, and store them near the machine. The instructions must be read and carefully observed by each operator prior to starting the work. Only persons who have been trained in the use of the machine and have been informed on the related dangers and risks are allowed to use the machine. The required minimum age must be met.

In addition to the safety notes contained in the present operating instructions and the special regulations of your country, the generally recognised technical rules for the operation of generators must be observed.

### III. Scope of delivery

1x 2x 20V Lawn Mower  
1x 40 L Solid Grass catcher  
1x Instruction Manual

- Open the packaging and remove the device carefully.
- Remove the packaging material as well as the packaging and transport bracing (if available).
- Check that the delivery is complete.
- Check the device and accessory parts for transport damage.
- If possible, store the packaging until the warranty period has expired.

**⚠ Attention!**

**The device and packaging materials are not toys!  
Children must not be allowed to play with plastic bags, film and small parts!  
There is a risk of swallowing and suffocation!**

### IV. Intended use

**Be sure to observe the restrictions in the safety instructions.**

**This garden tool is intended exclusively**

- to mow the lawns in the private sector,
- according to the descriptions and safety instructions indicated in this operating manual.

Any other use is not as intended. Improper use is not covered by the warranty and the manufacturer will reject any liability. The user is liable for all injuries to third parties and damage to their property. Operate the unit only in the technical condition as stipulated and delivered by the manufacturer. Arbitrary changes to the unit will exclude the manufacturer from any liability for resulting injury and/or damage.

Please note that our equipment has not been designed for use in commercial, trade or industrial applications. Our warranty will be voided if the equipment is used in commercial, trade or industrial businesses or for equivalent purposes.

### V. Safety information

These operating instructions provide important information concerning your safety which are marked with this symbol: ⚠

Furthermore this manual contains other important sections which are marked with the word **"ATTENTION!"**.

**⚠ Attention!**

While using the machine some safety precautions must be observed to prevent injuries and damage. Read the directions with due care. If you give the equipment to any other person, give them these operating instructions as well. We assume no liability for injuries or damages which are a results of non-compliance of this manual and its safety notes.

**⚠ DANGER**

Failure to follow these instructions may cause serious danger to life of danger or fatal injuries.

**⚠ WARNING**

Failure to follow these instructions may cause danger to life or danger of serious injuries.

**⚠ CAUTION**

Failure to follow these instructions may cause light to medium risk of injury.

**⚠ NOTE**

Failure to follow these instructions may cause danger of damage of the engine or other property values.

**General safety information****⚠ WARNING! Read all safety warnings and all instructions.**

Failure to follow the warnings and instructions may result in electric shock, fire and/or serious injury. Save all warnings and instructions for future reference. Read and follow instructions before using the charger:

- in these operating manual,
- the applicable rules and regulations for accident prevention.

This garden tool is not intended for use by persons (including children) with reduced physical, sensory or mental capabilities, or lack of experience and knowledge, unless they have been given supervision or instruction concerning use of the machine by a person responsible for their safety. Never allow children or people unfamiliar with these instructions to use the garden tool. Supervise children. This will ensure that children do not play with the unit.

**AFTER SALES SUPPORT**

11

 **AUS 1300 855 831** **support@schepach.com.au**

MODEL: 2x 20V Lawn Mower PRODUCT CODE: 57431 10/2017

The term “power tool” in all of the warnings refers to your mains-operated (corded) power tool or battery-operated (cordless) power tool.

### Work area safety

- **Keep work area clean and well lit.** Cluttered and dark areas invite accidents.
- **Do not operate power tools in explosive atmospheres, such as in the presence of flammable liquids, gases or dust.** Power tools create sparks which may ignite the dust or fumes.
- **Keep children and bystanders away while operating a power tool.** Distractions can cause you to lose control.

### Personal safety

- **Stay alert, watch what you are doing and use common sense when operating a power tool. Do not use a power tool while you are tired or under the influence of drugs, alcohol or medication.** A moment of inattention while operating power tools may result in serious personal injury.
- **Use personal protective equipment.** Always wear eye protection. Protective equipment such as dust mask, non-skid safety shoes, hard hat, or hearing protection used for appropriate conditions will reduce personal injuries.
- **Prevent unintentional starting. Ensure the switch is in the off-position before connecting to power source and/or battery pack, picking up or carrying the tool.** Carrying power tools with your finger on the switch or energising power tools that have the switch on invites accidents.
- **Remove any adjusting key or wrench before turning the power tool on.** A wrench or a key left attached to a rotating part of the power tool may result in personal injury.
- **Do not overreach. Keep proper footing and balance at all times.** This enables better control of the power tool in unexpected situations.
- **Dress properly. Do not wear loose clothing or jewellery. Keep your hair, clothing and gloves away from moving parts.** Loose clothes, jewellery or long hair can be caught in moving parts.
- **If devices are provided for the connection of dust extraction and collection facilities, ensure these are connected and properly used.** Use of dust collection can reduce dust-related hazards.

### Power tool use and care

- **Do not force the power tool. Use the correct power tool for your application.** The correct power tool will do the job better and safer at the rate for which it was designed.
- **Do not use the power tool if the switch does not turn it on and off.** Any power tool that cannot be controlled with the switch is dangerous and must be repaired.

- **Disconnect the plug from the power source and/or the battery pack from the power tool before making any adjustments, changing accessories, or storing power tools.** Such preventive safety measures reduce the risk of starting the power tool accidentally.
- **Store idle power tools out of the reach of children and do not allow persons unfamiliar with the power tool or these instructions to operate the power tool.** Power tools are dangerous in the hands of untrained users.
- **Maintain power tools. Check for misalignment or binding of moving parts, breakage of parts and any other condition that may affect the power tool's operation. If damaged, have the power tool repaired before use.** Many accidents are caused by poorly maintained power tools.
- **Keep cutting tools sharp and clean.** Properly maintained cutting tools with sharp cutting edges are less likely to bind and are easier to control.
- **Use the power tool, accessories and tool bits etc. in accordance with these instructions, taking into account the working conditions and the work to be performed.** Use of the power tool for operations different from those intended could result in a hazardous situation.

#### Battery tool use and care

- **Recharge only with the charger specified by the manufacturer.** A charger that is suitable for one type of battery pack may create a risk of fire when used with another battery pack.
- **Use power tools only with specifically designated battery packs.** Use of any other battery packs may create a risk of injury and fire.
- **When battery pack is not in use, keep it away from other metal objects, like paper clips, coins, keys, nails, screws or other small metal objects, that can make a connection from one terminal to another.** Shorting the battery terminals together may cause burns or a fire.
- **Under abusive conditions, liquid may be ejected from the battery; avoid contact. If contact accidentally occurs, flush with water. If liquid contacts eyes, additionally seek medical help.** Liquid ejected from the battery may cause irritation or burns.

#### Service

- **Have your power tool serviced by a qualified repair person using only identical replacement parts.** This will ensure that the safety of the power tool is maintained.

#### Safety instructions for lawnmower

##### General safety instructions

- To ensure your safety and for the safety of others, read this operating manual and its safety instructions before using the device. Please keep the operating manual and its safety instructions safe for subsequent use and always have them ready to hand.

## AFTER SALES SUPPORT

13

☎ AUS 1300 855 831

✉ [support@schepach.com.au](mailto:support@schepach.com.au)

MODEL: 2x 20V Lawn Mower PRODUCT CODE: 57431 10/2017

## Safety information

- If the unit changes ownership, hand over the operating manual with the unit.
- Persons who operate the unit must not be under the influence of intoxicants (e.g. alcohol, drugs or medication).
- Operate the unit only in the technical condition stipulated and delivered by the manufacturer. Unauthorised changes to the unit exclude liability of the manufacturer for any resulting damage and/or injury.
- Use the unit only in daylight or in good artificial lighting.
- Use the unit in dry conditions only. Protect it from rain and moisture. The ingress of water into the unit increases the risk of an electric shock.
- Switch the unit off and remove the safety key under the following conditions:
  - if the unit is left unattended;
  - before checking, cleaning or performing other work on the unit;
  - before removing blockages;
  - if a foreign object is hit; Check the lawnmower for damage, and have any damage repaired at a qualified technician or a service centre.
  - if the unit starts vibrating excessively.

**Before starting the unit**

- Before starting work, familiarise yourself with the unit and its functions as well as its controls.
- Inspect the lawnmower before switching it on and check for signs of wear and damage. Never use the lawnmower with damaged or missing guards, e.g. discharge flap and/or grass catcher, housing, etc. Have damage repaired by a qualified technician or the service centre.
- Do not use a unit which has a defective switch and can no longer be switched on or off.
- When working with or on the unit, always wear sturdy footwear and long trousers. Do not operate the unit when barefoot or wearing sandals.
- Check the terrain on which the unit will be used and remove any all stones, sticks, wires, bones and other foreign objects, which could be picked up by the unit, to avoid endangering people.

**When using the unit**

- Do not switch on the unit if there are persons (particularly children) or animals in the immediate vicinity. Ensure that children do not play with the unit.
- Interrupt working if you notice that persons (particularly children) or pets are nearby.
- Working on steep slopes can be dangerous.
  - Ensure that you have a firm footing and mow slowly.
  - Always mow across the slope and not up and down.
  - Be particularly careful when changing direction. There is a risk of tripping!
  - Do not mow on steep slopes.

- Be particularly careful when mowing backwards and pulling the lawnmower towards yourself.
- Do not tilt the lawnmower when switching on the motor.
- Maintain a safe distance as provided by the handle frame.
- Do not switch on the motor until your feet are at a safe distance from the cutter bar.
- Be careful and do not reach into the rotating cutter bar.
- Switch the lawnmower off before tilting or transporting it, e.g. from/to lawn or over paths.
- Never run over gravel while the motor is running. There is a risk of being hit by stones!
- Before lifting or transporting the lawnmower, switch the motor off, pull out the safety key and wait until the cutter bar has come to a standstill.
- Do not adjust the cutting height until the motor has been switched off and the cutter bar has come to a standstill.
- Never open the discharge flap while the motor is running.
- Before removing the grass catcher, switch the motor off and wait until the cutter bar has come to a standstill. After emptying the grass catcher, carefully re-attach it and ensure that the grass catcher is attached securely to the lawnmower.
- If possible, do not mow wet grass.
- Do not work with the garden tool in a potentially explosive environment in which there are flammable liquids, gases or dust. The unit may generate sparks which could ignite the dust or the vapours.
- When interrupting work, never leave the unit unattended and keep it in a safe place.

#### After using the unit

- Switch the unit off, remove the safety key and then place the unit in a safe location.
- Do not keep the unit within the reach of children.
- Ensure that the ventilation slots in the unit are clean.
- Keep all nuts, bolts and screws tight to be sure that the lawnmower is in safe working condition.
- Check the grass catcher frequently for wear or damages.
- Use only the cutter bar, which are intended for this lawnmower.
- Spare parts must conform with the requirements specified by the manufacturer. Therefore use original spare parts only or spare parts authorised by the manufacturer. When replacing parts, please follow the supplied installation instructions and remove the battery beforehand.
- Have repairs carried out exclusively by a qualified technician or a service centre.

#### Safety instructions for the battery charger

- **Keep the battery charger away from rain or moisture.** Penetration of water in the battery charger increases the risk of an electric shock.

---

## AFTER SALES SUPPORT

15

  **1300 855 831** **support@schepach.com.au**

MODEL: 2x 20V Lawn Mower PRODUCT CODE: 57431 10/2017

- **Keep the battery charger clean.** Contamination can lead to danger of an electric shock.
- **Before each use, check the battery charger, cable and plug. If damage is detected, do not use the battery charger. Never open the battery charger yourself. Have repairs performed only by a qualified technician and only using original spare parts.** Damaged battery chargers, cables and plugs increase the risk of an electric shock.
- **Do not place any objects on the battery charger and do not place the battery charger on soft surfaces.** There is a risk of fire.
- **Always check that the mains voltage matches the voltage indicated on the rating plate of the battery charger.**
- **Never use the charger if cable, plug or the unit itself has been damaged by external influences.** Take the charger to the nearest service centre.
- **Never open the battery charger.** If the battery charger is defective, take it to a service centre.

#### Safety instructions for Li-ion batteries

- **Do not open the battery.** There is a risk of a short-circuit.
- **Protect the battery from heat, e.g. from continuous exposure to sunlight, fire, water and humidity.** There is a risk of explosion.
- **In case of damage and improper use of the battery, vapours may be emitted.** Ventilate the area and seek medical help in case of complaints. The vapours can irritate the respiratory system.
- **Under abusive conditions, liquid may be ejected from the battery; avoid contact. If contact accidentally occurs, flush with water. If liquid contacts eyes, additionally seek medical help.** Liquid ejected from the battery may cause irritation or burns.
- **Use only original batteries with the voltage indicated on the rating plate of your electric power tool.** If other batteries are used, e.g. imitations, reconditioned batteries or third-party products, there is a risk of injuries as well as damage caused by exploding batteries.
- **The battery voltage must match the battery charging voltage of the battery charger.** Otherwise there is a risk of fire and explosion.
- **Recharge only with the charger specified by the manufacturer.** A charger that is suitable for one type of battery pack may create a risk of fire when used with another battery pack.
- **Pointed objects, such as nails or screwdrivers, or external forces may damage the battery.** This may cause an internal short-circuit and the battery to burn, smoke, explode or overheat.





## VI. Before initial operation

Unpack the garden tool and accessories and check that no parts are missing or damaged.

### NOTE

The batteries are not fully charged on delivery. Prior to initial operation, charge the batteries fully. See user manual of the battery charger.

### Safety key

The unit has a security key.

The key is located under the battery cover.

By removing the key, the power supply to the motor is interrupted.

### ⚠ WARNING!

Remove the safety key:

- if the unit is left unattended;
- before checking, cleaning or performing other work on the unit;
- before removing blockages;
- if a foreign object is hit.; Check the lawnmower for damage, and have any damage repaired at a qualified technician or a service centre.
- if the unit starts vibrating excessively.

### Fig.2

- To remove the key press the lock (1.) and pull out the safety key (2.).
- To insert the safety key press down the key until it clicks.

## VII. Assembling

### ⚠ WARNING!

Before performing any work on the garden tool, remove the safety key.

### Attaching the handlebar

#### ⚠ CAUTION!

When collapsing or unfolding the handlebar, the cable may be damaged. Ensure that the cable is not kinked.

Tools are not required to attach the handle bar.

### Fig.3

- Fold the lower handle upwards (1.).
- Align the marks. Flip the quick-clamping levers on both sides of the lower handle (2.).

---

## AFTER SALES SUPPORT

17

 **AUS 1300 855 831**

 **support@scheppach.com.au**

MODEL: 2x 20V Lawn Mower PRODUCT CODE: 57431 10/2017

**Fig.4**

- Place the upper handle on the lower handle (3.).
- Attach the upper handle (4.). Insert the threaded bolt of quickclamping lever (A) through the holes in the upper handle (B) and the lower handle (D) . Pull the handles slightly apart and place the spring (C) between the handles on the threaded bold. Screw the nut (E) a few turns onto the threaded bolt.
- Flip the quick-clamping levers (5.).

**NOTE**

If is it not possible to completety flip the quickclamping lever, loosen the nut slightly.

**Fig.5**

- Attach the cable with the two cable clamps (6.).

**Assembling the grass catcher (Fig. 6)**

- Insert the two lower parts together until it clicks (1.).
- Tighten the two screws at the bottom (2.).

**(Fig. 7)**

- Fit the upper part and press it together until it clicks (3.).

**Attaching the grass catcher (Fig. 8)**

- Lift the discharge flap (1.).
- Hook the grass catcher bag into the lawnmower (2.).
- Fold the discharge flap down again (3.).

**Adusting the handle height (Fig. 9)**

To adapt to the height of the user the handlebar can be adjusted to three different positions.

- Loosen the quick-clamping lever (1.).
- Move the handle to the desired height (2.).
- Flip the quick-clamping lever.

**Adjusting the cutting height (Fig. 10)**

The cutting height can be varied in 5 steps from 25 mm (1) to 75 mm (5) with the cutting height adjustment.

- Pull the handle outwards slightly.
- Set the required cutting height.
- Release the handle again.

**Inserting/replacing the batteries (Fig. 11)**

- Charge the battery as described in the user manual of the charger.
- Open the battery cover (1.)

- Press the battery holder including the batteries into the power tool until it clicks into place (2.).
- Close the battery cover (3.)

**(Fig. 12)**

- To remove, press the release button (1.) and pull out the battery holder (2.).

**⚠ CAUTION!**

Protect the battery contacts when the battery is not being used. Loose metal parts may short-circuit the contacts – Explosion and fire hazard!

## VIII. Commissioning

**Switching on/off the power tool (Fig. 13)**

For convenient handling the unit has four On/Off switches on the handlebar.

- Press the switch interlock and hold down (1.).
- Press any On/Off switch (2.). The motor runs.

**Switching off (Fig. 14)**

- Release the On-/Off-switch.

**⚠ WARNING!**

After release the On/Off switch, the cutter bar continues running briefly. Risk of injury!

**Battery state of charge (Fig. 15)**

The unit has a LED state of charge indicator on the handlebar. In addition, the charge status can be checked directly on the battery.

- Press the button to check the state of charge at the state of charge indicator LEDs.

The indicator goes out after 5 seconds. If one of the LEDs flashes, the battery must be recharged. If none of the LEDs light up after the button is pressed, the battery is faulty and must be replaced.

**Removing and emptying the grass catcher (Fig. 16)**

If clippings are left lying on the ground or if the level indicator on the grass catcher is closed (with the motor running), the grass catcher bag is full and should be emptied immediately.

- Switch the motor off.
- Wait until the cutter bar stops.
- Lift the discharge flap.
- Remove the grass catcher.
- Lower the discharge flap down again.

## AFTER SALES SUPPORT

- Empty the grass catcher.
- Before hooking, remove any obstructions from the cutting area.

### Working without the grass catcher

Whenever you detach the grass catcher, the deflector flap drops down. When working without the grass catcher, the mowed grass is ejected directly downwards.

### Tips on lawn care

Here are some tips to help you keep your lawn looking healthy and ensure uniform growth:

- Lawns consist of various grass types. Frequent mowing promotes the growth of grass, resulting in strong roots and a firm sward. If you seldom cut the grass, you will enhance the development of highgrowing types of grass and other weeds, such as clover, daisies).
- The normal height of a lawn is approx. 4–5 cm. Only one third of the total height should be mown; therefore cut 7–8 cm long grass to normal height.
- Try not to cut the grass shorter than 4 cm, otherwise the lawn will suffer during dry periods.
- If the grass has grown particularly high (for example, during a holiday period), cut it back to its normal height in several stages.
- When mowing, always overlap the mown swaths slightly.

## IX. Troubleshooting

Fault	Possible causes	Remedies
The motor fails to start	<ul style="list-style-type: none"> <li>• The capacitor is defective.</li> <li>• The connectors have become separated from the motor or the capacitor.</li> <li>• The mower is standing in high grass.</li> <li>• The mower housing is clogged.</li> <li>• Safety plug is not inserted.</li> <li>• Battery is not correctly inserted.</li> </ul>	<ul style="list-style-type: none"> <li>• The mower housing is clogged. Have repaired by the Customer Service Center.</li> <li>• Have repaired by the Customer Service Center.</li> <li>• Start in low grass or on an area that has already been mowed; change the cutting height if necessary.</li> <li>• Clean the housing so that the blade moves freely.</li> <li>• Insert safety plug</li> <li>• Remove the battery and reinsert.</li> </ul>

The motor performance drops	<ul style="list-style-type: none"> <li>• The grass is too high or too damp.</li> <li>• The mower housing is clogged.</li> <li>• The blade is severely worn.</li> <li>• Battery performance decreasing.</li> </ul>	<ul style="list-style-type: none"> <li>• Correct the cutting height.</li> <li>• Clean the housing.</li> <li>• Replace the blade.</li> <li>• Check the battery performance and charge the battery if necessary.</li> </ul>
Cutting is irregular	<ul style="list-style-type: none"> <li>• The blade is worn.</li> <li>• Wrong cutting height.</li> </ul>	<ul style="list-style-type: none"> <li>• Replace or resharpen the blade.</li> <li>• Correct the cutting height.</li> </ul>

## X. Technical data

### Cordless 2x 20V Lawn Mower

Nominal voltage	40 V
Battery type	4.0 Ah
Cutting width	370 mm
Cutting height	25 - 75 mm
Capacity grass catcher	40 l
Idle speed	4000 min <sup>-1</sup>
Weight (with battery)	16.9 kg

### Sound and vibration

The noise and vibration values were developed using a standard measuring method.

Sound pressure level $L_{pA}$	83 dB(A)
Sound pressure level $L_{WA}$ (measured)	93.2 dB(A)
Sound power level $L_{WA}$ (guaranteed)	96 dB(A)
Uncertainty $K_{WA}$	3 dB(A)
Vibration $a_h$	2.0 m/s <sup>2</sup>
Uncertainty K	1.5 m/s <sup>2</sup>

### Wear ear protection.

The effects of noise can cause hearing loss.  
Keep the noise emissions and vibrations to a minimum.

## AFTER SALES SUPPORT

21

  1300 855 831

 [support@scheppach.com.au](mailto:support@scheppach.com.au)

MODEL: 2x 20V Lawn Mower PRODUCT CODE: 57431 10/2017

- Only use appliances which are in perfect working order.
- Service and clean the appliance regularly.
- Adapt your working style to suit the appliance.
- Do not overload the appliance.
- Have the appliance serviced whenever necessary.
- Switch the appliance off when it is not in use.
- Wear protective gloves.

## XI. Maintenance and care

### **⚠ WARNING!**

Before performing any maintenance and cleaning work on the garden tool, remove the batteries. Sharp cutting tool! Wear protective gloves.

### **Cleaning the Lawn Mower**

#### **⚠ WARNING!**

Do not use water or liquid detergents.

Whenever possible, always clean the unit directly after mowing.

- Remove the battery.
- Remove the grass catcher.
- After mowing, always clean the lawnmower with a hand brush.
- Remove grass residues carefully out of the cutting area. Remove stuck clipping deposits using a stick.
- Keep the ventilation slits clean and dustfree.

### **Grass catcher**

- For thorough cleaning, the grass catcher can be cleaned with a hose.
- To ensure that the level indicator functions correctly, regularly clean the area under the level indicator on the inside of the grass catcher with a hand brush.

### **Replacing/regrinding the cutter bar**

#### **⚠ WARNING!**

To protect against injury from the cutter bar, have a specialist garage perform all work such as replacing or regrinding the cutter bar (special tools required). Spare parts must conform with the requirements specified by the manufacturer. Therefore use original spare parts only or spare parts authorised by the manufacturer.

### **Repairs**

Check the unit for damage. Repairs may be carried out by an authorised customer service centre only.

## XII. Storage - Transport

### General informations

- Remove the safety key before storing.
- Store the unit in a dry and frost-free place (10-25 °C).
- Store the batteries and the unit separately.
- Charge the batteries before storing the unit in winter.
- Keep the unit, in particular its plastic components, away from brake fluids, petrol, petroleum products, penetrating oil, etc. They contain chemical substances which may damage, attack or destroy the plastic components of the unit.
- Fertilisers and other garden chemicals contain substances which may have a highly corrosive effect on the metal parts of the unit. Therefore do not store your unit near these substances.

### Folding the lawnmower

#### ⚠ CAUTION!

When collapsing or unfolding the handlebar, the cable may be damaged. Ensure that the cable is not kinked.

The handle bar can be folded down to facilitate storage and transport.

- Loosen the quick-clamping levers on the upper handle (1.) and move the handle backwards (2.). (Fig. 17)
- Loosen the quick-clamping levers on the housing (3.) and move the lower handle forwards and put on the housing (2.). (Fig. 18)

## XIII. Disposal and recycling

The package protects the appliance against damage during transport. Packing materials are usually chosen depending on their environmental friendliness and disposal method and can therefore be recycled. Returning the package to material circulation saves raw materials and reduces waste disposal costs. Parts of packages (e.g. foils, styropor®) can be dangerous to children. Risk of suffocation! Keep parts of packages away from children and dispose them as soon as possible.



AUS

GARDENLINE

24

## AFTER SALES SUPPORT

 [support@scheppach.com.au](mailto:support@scheppach.com.au)

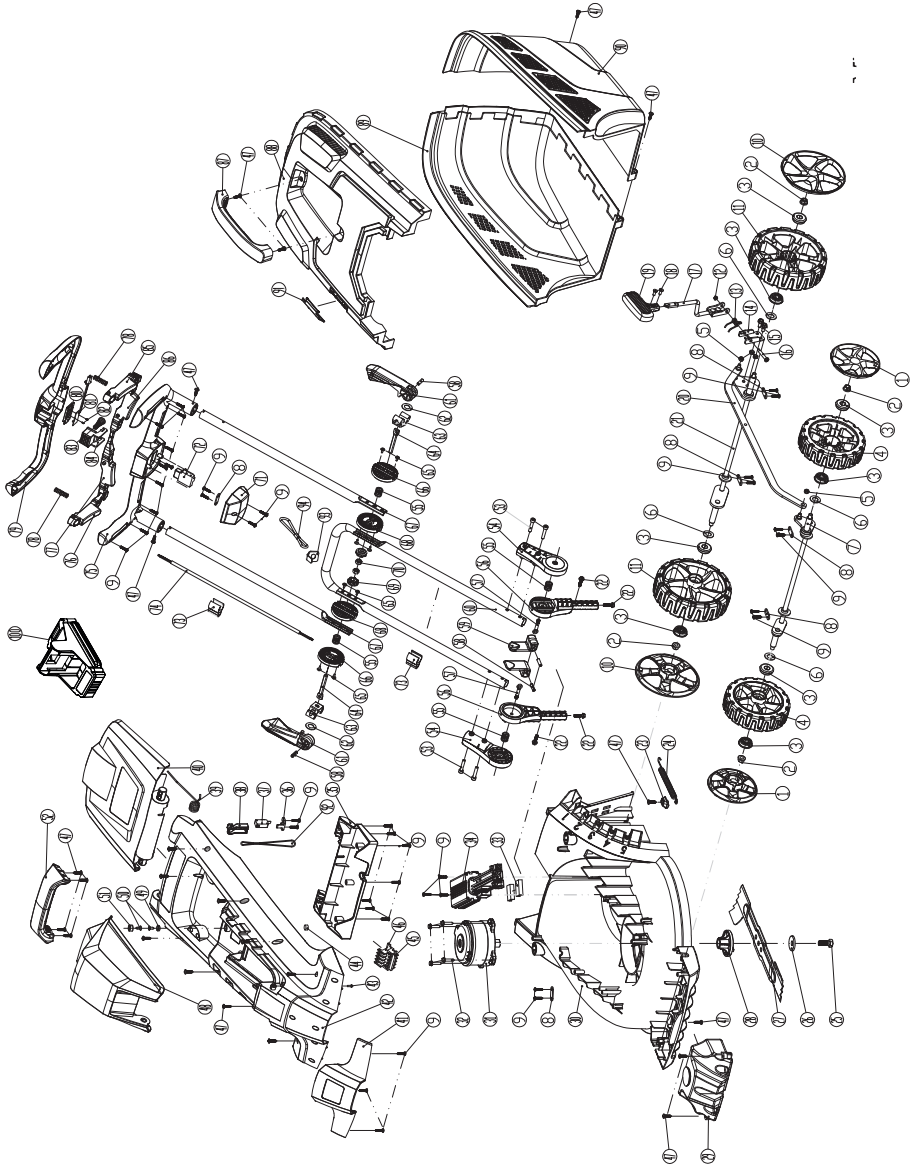
  1300 855 831

MODEL: 2x 20V Lawn Mower PRODUCT CODE: 57431 10/2017





### XIV. BOM View



### AFTER SALES SUPPORT



# X FINITY PLUS 20V BATTERY SYSTEM

*The Xfinity battery System has more than 15 tools that work with the same battery platform, giving you the ultimate versatility in tool selection to get your job finished. With LITHIUM powered batteries, you can get more done in less time and improve the performance of every Xfinity powered Workzone® or Gardenline® tool ever made. Watch out for more Xfinity tools coming soon.*





**GARDENLINE®**  
**Cordless 2x 20V Lawn Mower**

# Repair and Refurbished Goods or Parts Notice

Unfortunately, from time to time, faulty products are manufactured which need to be returned to the Supplier for repair.

Please be aware that if your product is capable of retaining user-generated data (such as files stored on a computer hard drive, telephone numbers stored on a mobile telephone, songs stored on a portable media player, games saved on a games console or files stored on a USB memory stick) during the process of repair, some or all of your stored data may be lost.

**We recommend you save this data elsewhere prior to sending the product for repair.**

You should also be aware that rather than repairing goods, we may replace them with refurbished goods of the same type or use refurbished parts in the repair process.

**Please be assured though, refurbished parts or replacements are only used where they meet ALDI's stringent quality specifications.**

If at any time you feel your repair is being handled unsatisfactorily, you may escalate your complaint. Please telephone us on 1300 855 831 or write to us at:

RossMac Pty. Ltd.

P.O. Box 261, Essendon North, Victoria, 3041

Telephone 1300 855 831

Opening hours: Monday - Friday 9:00am-5:00pm

Email: [support@scheppach.com.au](mailto:support@scheppach.com.au)

#### AFTER SALES SUPPORT

1300 855 831

[support@scheppach.com.au](mailto:support@scheppach.com.au)

AUS Hotline Costs: Local rate for landline calls\*

MODEL: 2x 20V Lawn Mower PRODUCT CODE: 57431 10/2017

\*Charges may vary dependent upon network operator or mobile network provider.





**GARDENLINE**<sup>®</sup>



ROSSMAC PTY. LTD.  
P.O. BOX 261, ESSENDON NORTH, VICTORIA, 3041





# Warranty Certificate

REGISTER YOUR PURCHASE AT [www.aldi.com.au/en/about-aldi/product-registration/](http://www.aldi.com.au/en/about-aldi/product-registration/) TO KEEP UP-TO-DATE WITH IMPORTANT PRODUCT INFORMATION

**Congratulations!** You have made an excellent choice of this quality product. Our commitment to quality also includes our service. Should you, contrary to expectations, experience defects due to manufacturing faults, ALDI will provide you with a warranty against defects as follows:

## Warranty

The product is guaranteed to be free from defects in workmanship and parts for a period of 5 years (dependant on product) from the date of purchase. Defects that occur within this warranty period, under normal use and care, will be repaired, replaced or refunded at our discretion. The benefits conferred by this warranty are in addition to all rights and remedies in respect of the product that the consumer has under the Competition and Consumer Act 2010 and similar state and territory laws.

Our goods come with guarantees that cannot be excluded under the Australian Consumer Law. You are entitled to a replacement or refund for a major failure and for compensation for any other reasonably foreseeable loss or damage. You are also entitled to have the goods repaired or replaced if the goods fail to be of acceptable quality and the failure does not amount to a major failure.

## Proof of Purchase

This warranty is valid for the original purchase and is not transferable. Please keep your purchase docket, tax invoice or receipt as the best proof of purchase, and as proof of date on which the purchase was made.

## Extent of Warranty

This warranty is limited to defects in workmanship or parts. All defective products or parts will be repaired or replaced. This warranty does not cover batteries or any other consumable items.

## Normal Wear and Tear

This warranty does not cover normal wear and tear to the products or parts.

## Exclusions

This warranty does not cover:

- Any defects caused by an accident, misuse, abuse, improper installation or operation, lack of reasonable care, unauthorised modification, loss of parts, tampering or attempted repair by a person not authorised by the distributor.
- Any product that has not been installed, operated or maintained in accordance with the manufacturer's operating instructions provided with the product.
- Any product that has been used for purposes other than domestic use.
- Any damage caused by improper power input or improper cable connection.

## To Make a Claim

This warranty against defects is provided by ALDI Stores, Locked Bag 56, St Marys Delivery Centre, NSW 2760, Phone (02) 9675 9000. If a defect in the goods appears within 60 months (the identified period on the packaging), you are entitled to claim a warranty, please contact or send all warranty claims to:

ROSSMAC PTY. LTD.

P.O. BOX 261, ESSENDON NORTH, VICTORIA, 3041

Telephone: 1300 855 831

Operating hours: Monday to Friday, 8:00am-6:00pm / Email: [support@scheppach.com.au](mailto:support@scheppach.com.au)

When making a return, please ensure the product is properly packaged so as to ensure that no damage occurs to the product during transit.

Please provide the original or a copy of the proof of purchase. Also please make sure you have included an explanation of the problem.

Please note that the costs of making a warranty claim, including any return postage, will be covered by the supplier identified above.

Please note upon receiving your warranty claim, the supplier will send, via the post or email, a repair and refurbished goods or parts notice. Please provide your email address and advise the supplier, if you wish to obtain a repair and refurbished goods or parts notice via email.

## AFTER SALES SUPPORT

1300 855 831

Free hotline

[support@scheppach.com.au](mailto:support@scheppach.com.au)

MODEL: 2x 20V Lawn Mower PRODUCT CODE: 57431 10/2017





# Warranty Certificate

PRODUCT NAME Cordless Lawn Mower

BRAND NAME GARDENLINE®

MODEL NUMBER Gdn 2x 20V Gdn Mower Skin      PRODUCT CODE 57431 10/2017

NAME \_\_\_\_\_

ADDRESS \_\_\_\_\_

EMAIL \_\_\_\_\_ DAYTIME TEL NO \_\_\_\_\_

DATE OF PURCHASE \_\_\_\_\_

SERIAL NUMBER \_\_\_\_\_

We recommend that you attach a photocopy of your receipt, showing the date of purchase, to this Warranty certificate and **keep for your reference**. Please do not send to the address below.

In the event of a product fault, please call the Customer Service hotline. Please ensure that you have the product details (as shown on this card) at hand so that we are able to respond quickly and efficiently as possible.

You can also register your product at <https://www.aldi.com.au/en/about-aldi/product-registration/> to keep up-to-date with important product information.

**ROSSMAC PTY. LTD.**  
**P.O. BOX 261, ESSENDON NORTH, VICTORIA, 3041**  
**Telephone: 1300 855 831**  
**Operating hours: Monday to Friday, 8:00am-6:00pm**  
**Email: [support@scheppach.com.au](mailto:support@scheppach.com.au)**

**AFTER SALES SUPPORT**

1300 855 831  
Free hotline

[support@scheppach.com.au](mailto:support@scheppach.com.au)  
MODEL: 2x 20V Lawn Mower PRODUCT CODE: 57431 10/2017

