

ALDI FERREX 225 CC  
SELF DRIVE MOWER  
SELF DRIVE REPAIR  
INSTRUCTIONS

PLU 10093

ON SALE SEPTEMBER / OCTOBER 2022

IF YOU ARE HAVING ISSUES  
WITH THE SELF DRIVE OF  
YOUR MOWER PLEASE  
CONTACT 1300 855 831 FOR  
A REFURBISH KIT

BEFORE ATTEMPTING ANY  
MAINTENANCE OF YOUR  
MOWER REMOVE THE  
BATTERY AND STARTER KEY

# BEFORE YOU START REMOVE THE BATTERY AND STARTER KEY



REMOVE THE BATTERY

REMOVE THE STARTER KEY

# SET THE HEIGHT ADJUSTMENT



MOVE THE HEIGHT ADJUSTMENT  
HANDLES TO THE # 4 SLOT

THIS WILL MAKE IT EASIER TO ACCESS  
THE UNDERNEATH OF THE MOWER

# FOLD THE HANDLES FORWARD



RELEASE THE SPRING-LOADED  
LOCKING PINS ON THE LOWER  
SECTION OF THE HANDLES AND FOLD  
THE HANDLES FORWARD OVER THE  
MOTOR

# STAND THE MOWER ON ITS REAR WHEELS



LIFT THE FRONT OF THE MOWER  
AND TILT BACK TO REST ON THE REAR  
WHEELS

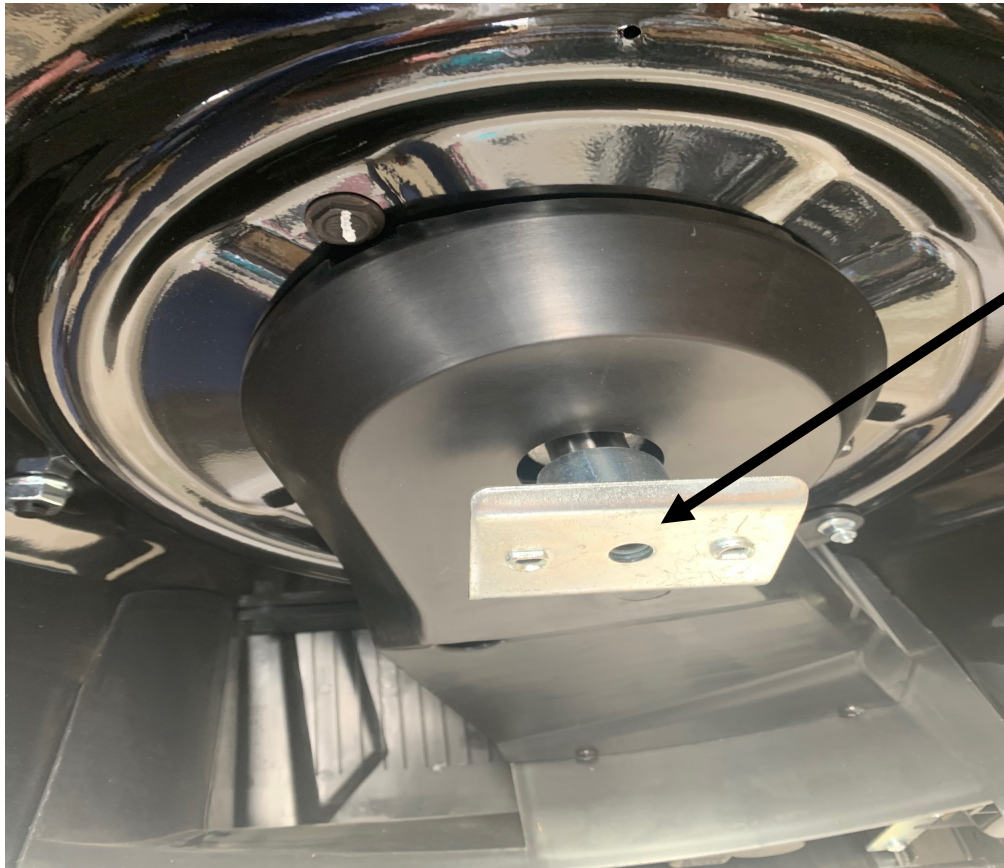
# REMOVE THE BLADE DISC



WITH A 17MM SOCKET OR SPANNER  
UNDO THE BOLT IN THE CENTRE OF  
THE BLADE DISC – ANTICLOCKWISE



# REMOVE THE BLADE DISC PLATE



REMOVE THE BLADE DISC AND DISC  
SUPPORT PLATE

# REMOVE THE BELT COVER



UNDO THE TWO PHILLIPS HEAD  
SCREWS ON THE PLASTIC BELT COVER  
LOCATED ON THE LOWER SECTION

# REMOVE THE BELT COVER



UNDO TWO 10MM NUTS HIGHER UP ON THE BELT COVER, USING A LONG SOCKET WILL MAKE THIS EASIER. THE HEAD OF THE BOLTS ON THE OTHER SIDE OF THE DECK ARE 8MM

TOP OF DECK

# TAKE THE BELT OFF THE FRONT PULLEY



REMOVE THE BELT FROM DRIVE PULLEY

# REMOVE THE AXLE RETAINER PLATE



UNDO TWO PHILLIPS HEAD SCREWS  
ON THE AXLE RETAINER PLATE AND  
REMOVE AND DISCARD, KEEP THE  
SCREWS

# ADDING TENSIONING SPRING



USING A 13MM SOCKET REMOVE THE NUT INTERNALLY ABOVE THE GEARBOX AND THE BOLT FROM THE RIGHT HAND SIDE OF THE MOWER.

# ADDING TENSIONING SPRING



COMPLETELY REMOVE THE  
PREFITTED BOLT AND DISCARD

REPLACE WITH LONGER BOLT  
SUPPLIED

# ADDING TENSIONING SPRING



REPLACE WITH LONGER BOLT  
SUPPLIED



# ADDING TENSIONING SPRING



FIT NUT 1 SUPPLIED TO SECURE  
REPLACEMENT BOLT – FULLY  
TIGHTEN

# FITTING THE TENSIONING SPRING



FIT SPRING TO BOLT USING CLOSED LOOP AS SHOWN

# FITTING THE TENSIONING SPRING



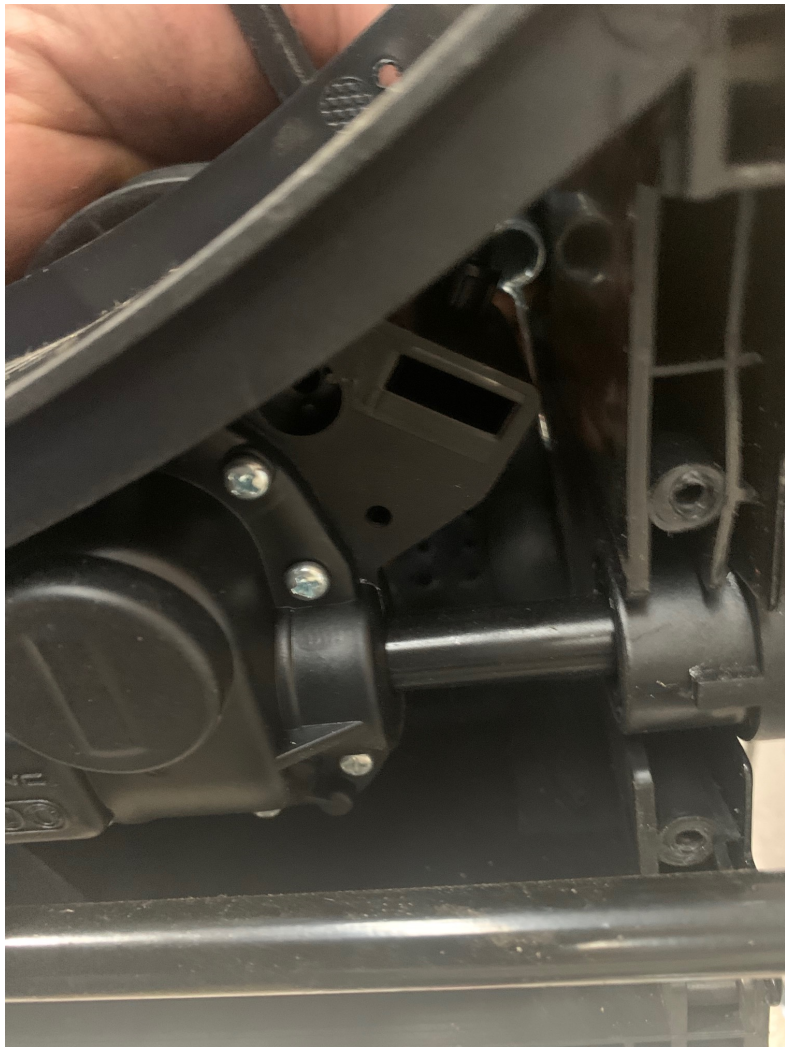
FIT NUT 2 LOOSELY TO BOLT TO HOLD  
SPRING IN PLACE

# ADDING TENSIONING SPRING



REFIT BELT ONTO BOTH PULLEYS

# ADDING TENSIONING SPRING



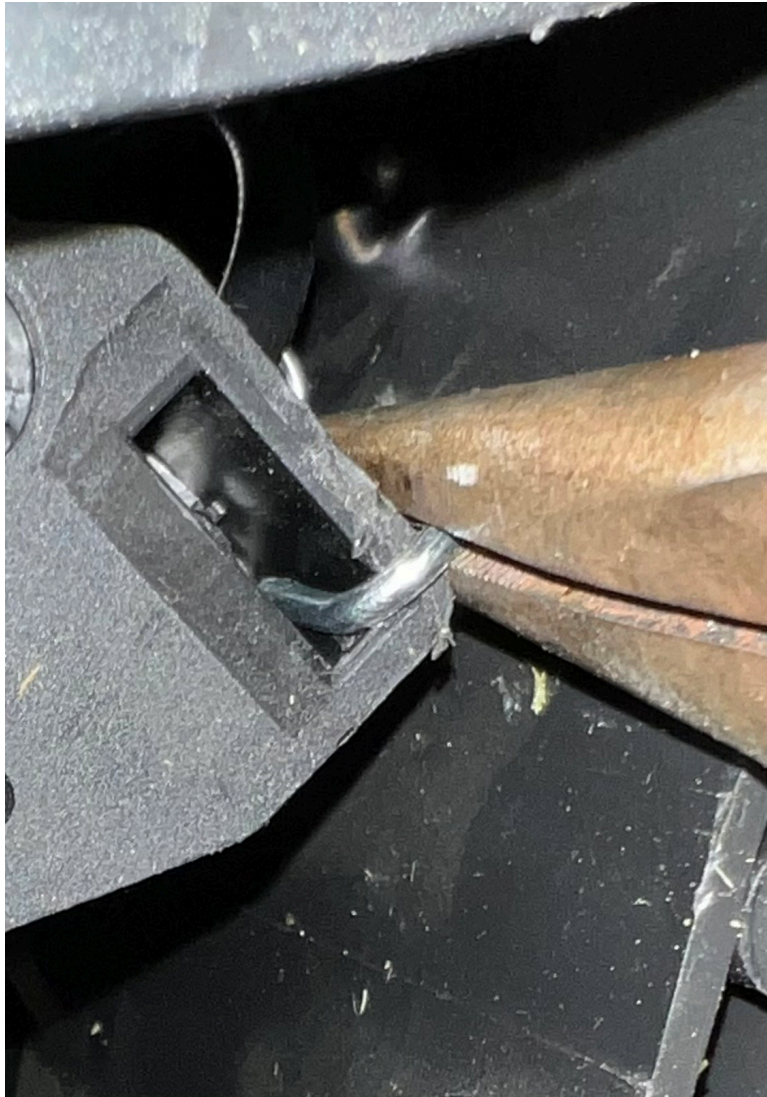
POSITION THE SPRING SO AS IT IS IS  
ACCESSIBLE TO HOLD WITH A PAIR  
OF LONG NOSED PLIERS

# ADDING TENSIONING SPRING



USING LONG NOSED PLIERS PULL THE SPRING SO IT CAN BE LOCATED ONTO THE SELF DRIVE GEARBOX

# ADDING TENSIONING SPRING



LOCATE THE HOOK OF THE SPRING  
ONTO POINT ON THE SELF DRIVE  
GEAR BOX AS SHOWN

# ADDING TENSIONING SPRING



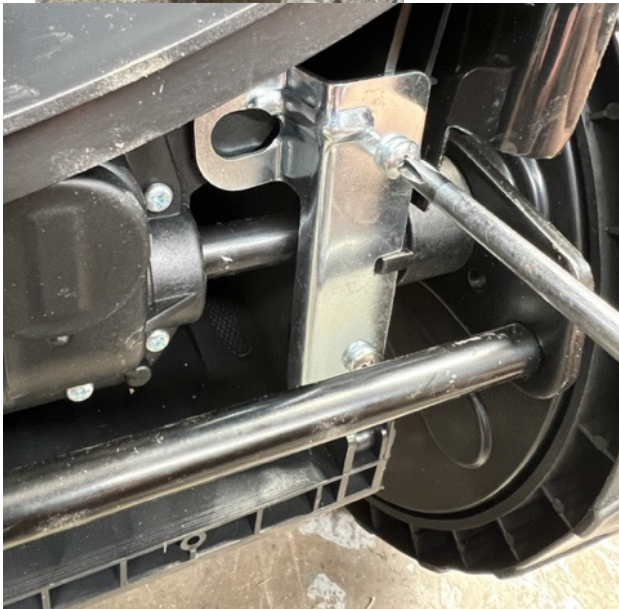
FULLY TIGHTEN THE SPRING  
RETAINING BOLT



# FITTING THE NEW AXLE RETAINER PLATE



FIT THE NEW AXLE RETAINER PLATE  
AND SECURE WITH THE SCREWS  
FROM THE ORIGINAL



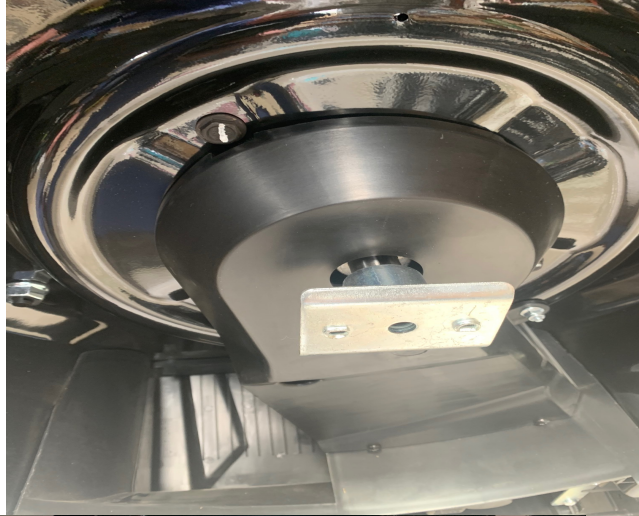
# REFIT THE BELT COVER



REFIT THE BELT COVER (REVERSE OF  
REMOVAL)



# REFIT THE BLADE SUPPORT AND BLADE DISC



REFIT THE BLADE SUPPORT AND  
BLADE DISC



SET THE MOWER BACK ONTO  
ITS WHEELS.

REPLACE BATTERY AND KEY  
AND CHECK FOR CORRECT  
OPERATION

IF YOU HAVE ANY QUESTIONS  
CALL 1300 855 831